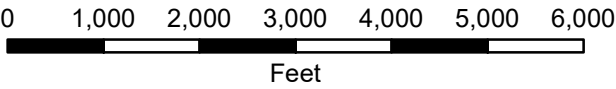
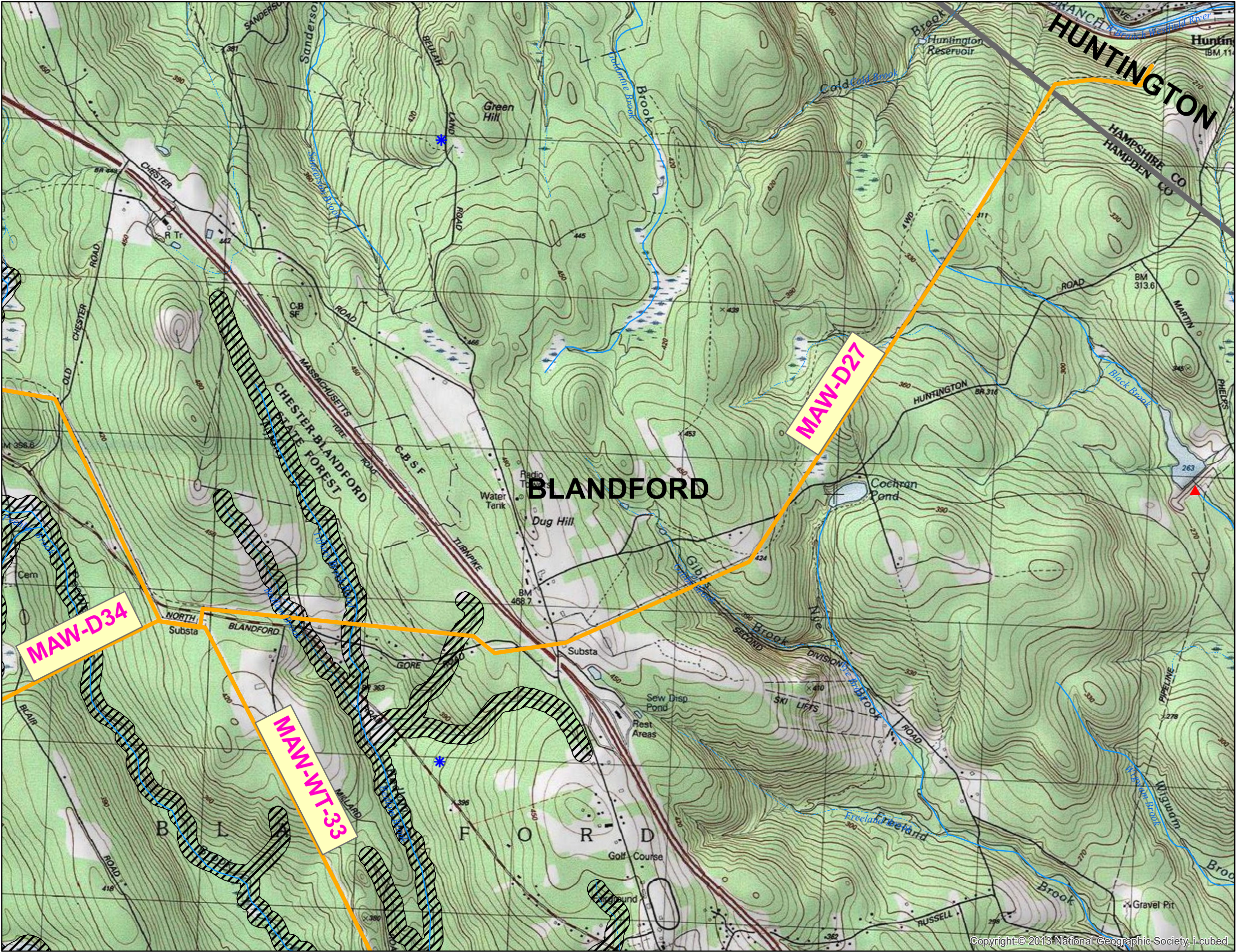


Eversource Energy
Western MA
2022 Yearly
Operational Plan
BLANDFORD
Rights of Way
MAW-D27, D34, & WT33



- 2022 Eversource Rights of Way
- Emergency Surface Water Well
- Ground Water Well
- Non-Transient, Non-Community Well
- Proposed Well
- Surface Water Well
- Transient, Non-Community Well
- Private Well
- NHESP Certified Vernal Pools
- Perennial Rivers and Streams
- Intermittent Rivers and Streams
- Mass Town Lines
- Mass Zone A (identifies surface waterbodies, tributaries and associated waterbodies, follow Sensitive Area treatment methods per 333 CMR 11.04)



Source: "Office of Geographic and Environmental Information (Mass GIS), Commonwealth of Massachusetts, Executive Office of Energy and Environmental Affairs".
Public Water Supply data provided by MA DEP Drinking Water Program, December 2021 DEP Public Water Supplies