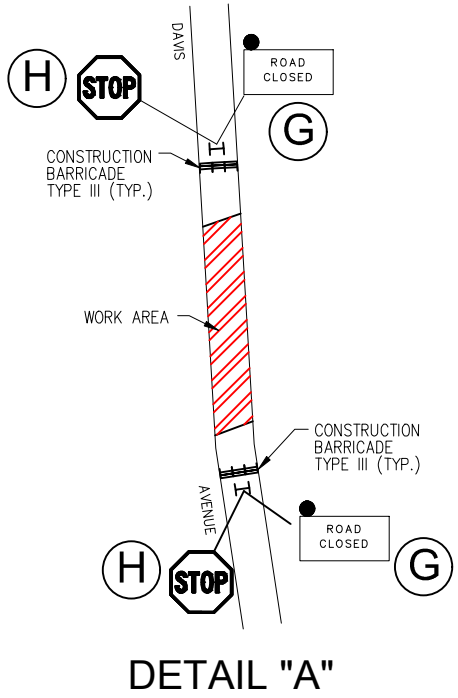
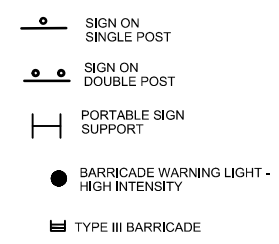


# LEGEND - SIGNS & SYMBOLS

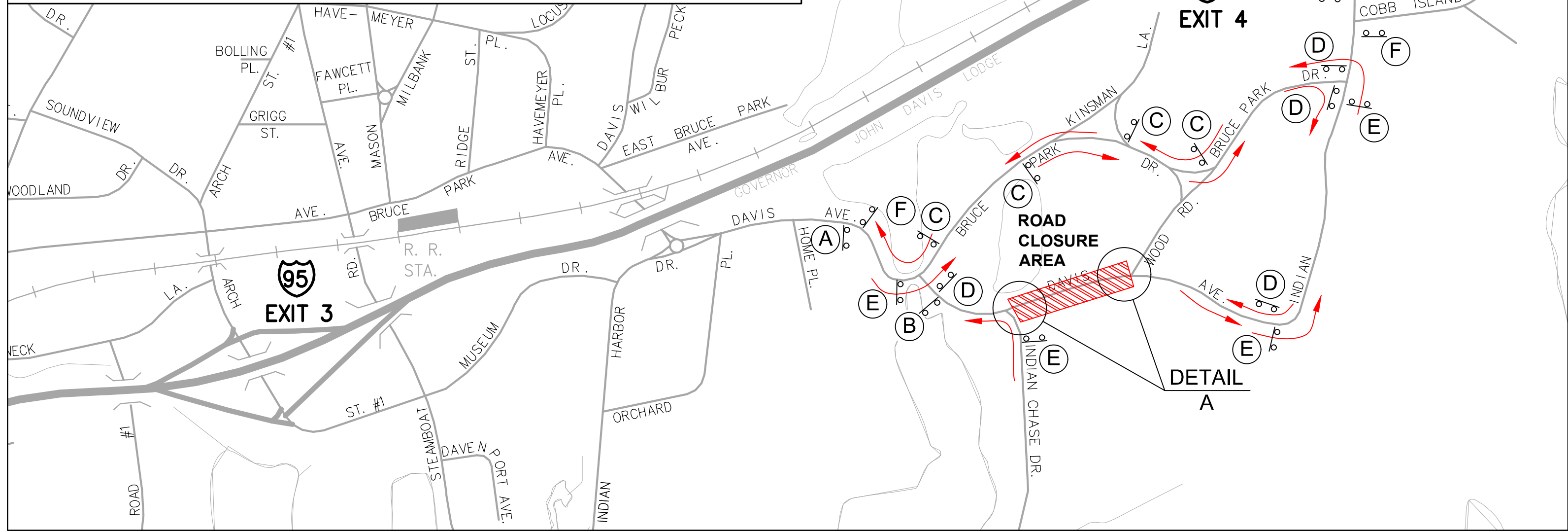
SIGN	DOT CATALOG NO.	SIGN	DOT CATALOG NO.
<b>(A)</b> DAVIS AVENUE CLOSED AHEAD NO THRU TRAFFIC	80-9928 (BLANK) VARIABLE LEGEND 60"x30"	<b>(F)</b> END DETOUR	80-9708 24"x18"
<b>(B)</b> ROAD CLOSED AHEAD LOCAL TRAFFIC ONLY	80-9077 60"x30"	<b>(G)</b> ROAD CLOSED	80-9080 48"x30"
<b>(C)</b> DAVIS AVENUE DETOUR (Up Arrow)	80-9916 48"x10" 80-9710 24"x30"	<b>(H)</b> STOP	31-0557 48"
<b>(D)</b> DAVIS AVENUE DETOUR (Right Arrow)	80-9916 48"x10" 80-9710 24"x30"		
<b>(E)</b> DAVIS AVENUE DETOUR (Left Arrow)	80-9916 48"x10" 80-9710 24"x30"		

- NOTE**
- ALL CONFLICTING SIGNS SHALL BE COVERED OR REMOVED.
  - DETOUR SIGNS ARE ONLY TO BE POSTED WHEN DETOUR IS IN USE.
  - DETOUR SIGNS SHOULD BE COVERED OR REMOVED WHEN DETOUR IS NOT IN USE.
  - SIGN SUPPORTS SHALL BE TYPICAL METAL SIGN POSTS AS DETAILED ON CONN. DEPARTMENT OF TRANSPORTATION STANDARD SHEET NO. TR-1208\_02.
  - "ROAD CLOSED" AND "STOP" (31-0557) SIGNS SHALL BE DISPLAYED IN FRONT OF TYPE III BARRICADES.



## NOTE:

- DETOUR LIMITED TO CONSTRUCTION BETWEEN NOVEMBER 1 TO APRIL 30
- DAILY CONSTRUCTION HOURS:  
7 AM - 6 PM MONDAY-FRIDAY  
9 AM - 5 PM SATURDAY
- MAINTAIN EXISTING PEDESTRIAN WALKWAYS.



Alfred Benesch & Company • www.benesch.com  
120 Hebron Avenue • Glastonbury, Connecticut 06033  
Phone: (860) 633-8341 • Fax: (860) 633-1068



1" = 500'

## DETOUR PLAN 7 DAVIS AVENUE DETOUR #1

EVERSOURCE 115 KV Underground Transmissions Facility  
From CosCob Substation To New Greenwich Substation