

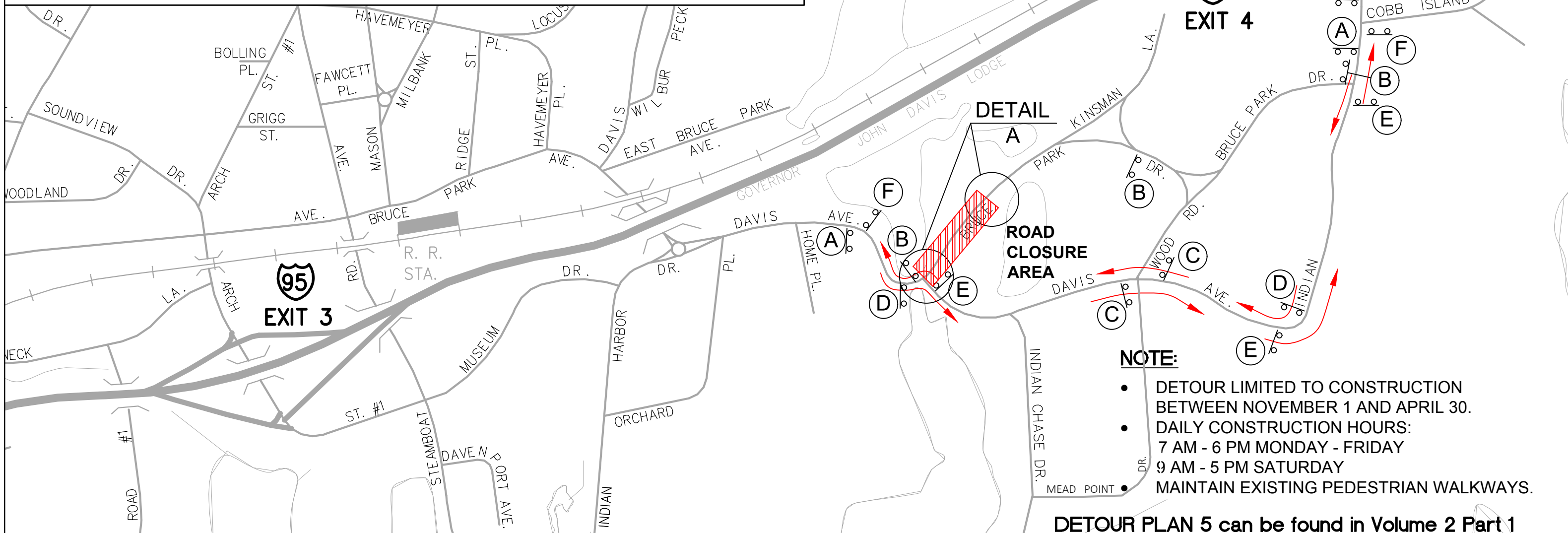
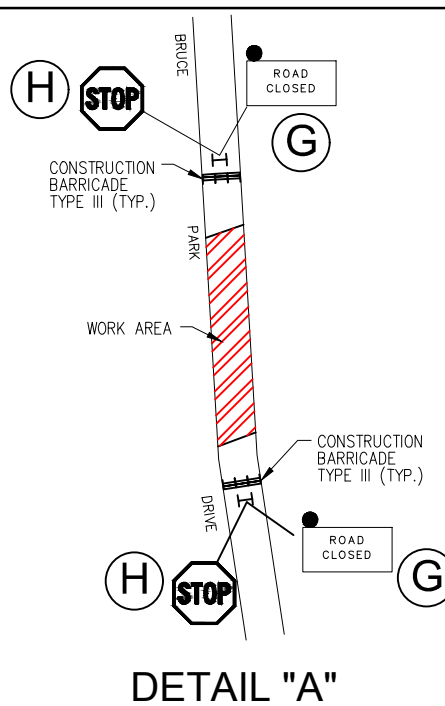
LEGEND - SIGNS & SYMBOLS

SIGN	DOT CATALOG NO.	SIGN	DOT CATALOG NO.
(A) BRUCE PARK DRIVE CLOSED AHEAD NO THRU TRAFFIC	80-9928 (BLANK) VARIABLE LEGEND 60"x30"	(F) END DETOUR	80-9708 24"x18"
(B) ROAD CLOSED AHEAD LOCAL TRAFFIC ONLY	80-9077 60"x30"	(G) ROAD CLOSED	80-9080 48"x30"
(C) BRUCE PARK DRIVE DETOUR (up arrow)	80-9916 48"x10" 80-9710 24"x30"	(H) STOP	31-0557 48"
(D) BRUCE PARK DRIVE DETOUR (right arrow)	80-9916 48"x10" 80-9710 24"x30"		
(E) BRUCE PARK DRIVE DETOUR (left arrow)	80-9916 48"x10" 80-9710 24"x30"		

NOTE

- ALL CONFLICTING SIGNS SHALL BE COVERED OR REMOVED.
- DETOUR SIGNS ARE ONLY TO BE POSTED WHEN DETOUR IS IN USE.
- DETOUR SIGNS SHOULD BE COVERED OR REMOVED WHEN DETOUR IS NOT IN USE.
- SIGN SUPPORTS SHALL BE TYPICAL METAL SIGN POSTS AS DETAILED ON CONN. DEPARTMENT OF TRANSPORTATION STANDARD SHEET NO. TR-1208_02.
- "ROAD CLOSED" AND "STOP" (31-0557) SIGNS SHALL BE DISPLAYED IN FRONT OF TYPE III BARRICADES.

- SIGN ON SINGLE POST
- SIGN ON DOUBLE POST
- PORTABLE SIGN SUPPORT
- BARRICADE WARNING LIGHT - HIGH INTENSITY
- TYPE III BARRICADE



NOTE:

- DETOUR LIMITED TO CONSTRUCTION BETWEEN NOVEMBER 1 AND APRIL 30.
- DAILY CONSTRUCTION HOURS:
7 AM - 6 PM MONDAY - FRIDAY
9 AM - 5 PM SATURDAY
- MAINTAIN EXISTING PEDESTRIAN WALKWAYS.

DETOUR PLAN 5 can be found in Volume 2 Part 1



Alfred Benesch & Company • www.benesch.com
120 Hebron Avenue • Glastonbury, Connecticut 06033
Phone: (860) 633-8341 • Fax: (860) 633-1068



1" = 500'

DETOUR PLAN 5B BRUCE PARK DRIVE DETOUR

EVERSOURCE 115 KV Underground Transmissions Facility
At The Indian Harbor Crossing