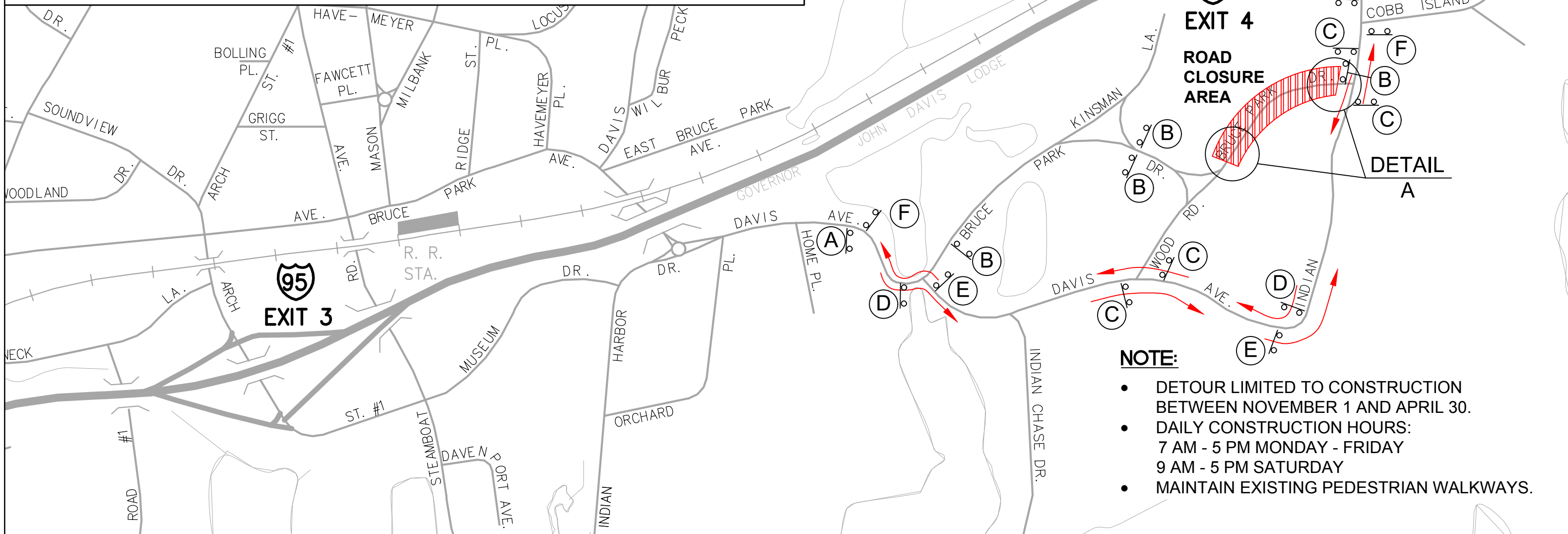
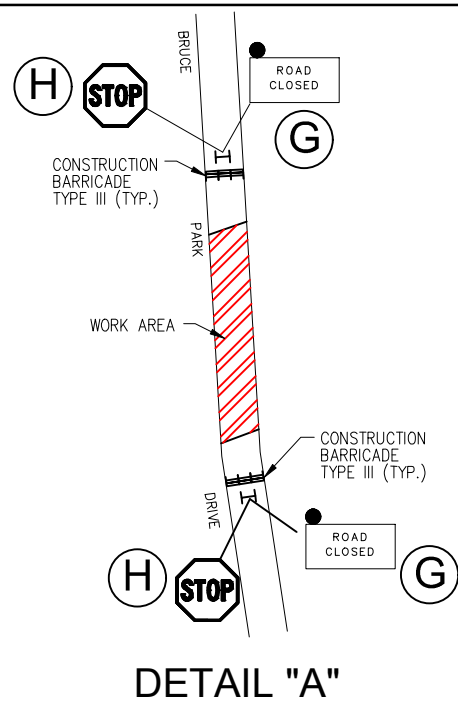


# LEGEND - SIGNS & SYMBOLS

SIGN	DOT CATALOG NO.	SIGN	DOT CATALOG NO.
(A)	80-9928 (BLANK) VARIABLE LEGEND 60"x30"	(F)	80-9708 24"x18"
(B)	80-9077 60"x30"	(G)	80-9080 48"x30"
(C)	80-9916 48"x10" 80-9710 24"x30"	(H)	31-0557 48"
(D)	80-9916 48"x10" 80-9710 24"x30"		
(E)	80-9916 48"x10" 80-9710 24"x30"		

- NOTE**
1. ALL CONFLICTING SIGNS SHALL BE COVERED OR REMOVED.
  2. DETOUR SIGNS ARE ONLY TO BE POSTED WHEN DETOUR IS IN USE.
  3. DETOUR SIGNS SHOULD BE COVERED OR REMOVED WHEN DETOUR IS NOT IN USE.
  4. SIGN SUPPORTS SHALL BE TYPICAL METAL SIGN POSTS AS DETAILED ON CONN. DEPARTMENT OF TRANSPORTATION STANDARD SHEET NO. TR-1208\_02.
  5. "ROAD CLOSED" AND "STOP" (31-0557) SIGNS SHALL BE DISPLAYED IN FRONT OF TYPE III BARRICADES.

- SIGN ON SINGLE POST
- SIGN ON DOUBLE POST
- PORTABLE SIGN SUPPORT
- BARRICADE WARNING LIGHT - HIGH INTENSITY
- TYPE III BARRICADE



- NOTE:**
- DETOUR LIMITED TO CONSTRUCTION BETWEEN NOVEMBER 1 AND APRIL 30.
  - DAILY CONSTRUCTION HOURS:  
7 AM - 5 PM MONDAY - FRIDAY  
9 AM - 5 PM SATURDAY
  - MAINTAIN EXISTING PEDESTRIAN WALKWAYS.



Alfred Benesch & Company • www.benesch.com  
120 Hebron Avenue • Glastonbury, Connecticut 06033  
Phone: (860) 633-8341 • Fax: (860) 633-1068



1" = 500'

## DETOUR PLAN 5 BRUCE PARK DRIVE DETOUR

EVERSOURCE 115 KV Underground Transmissions Facility  
From CosCob Substation To New Greenwich Substation