

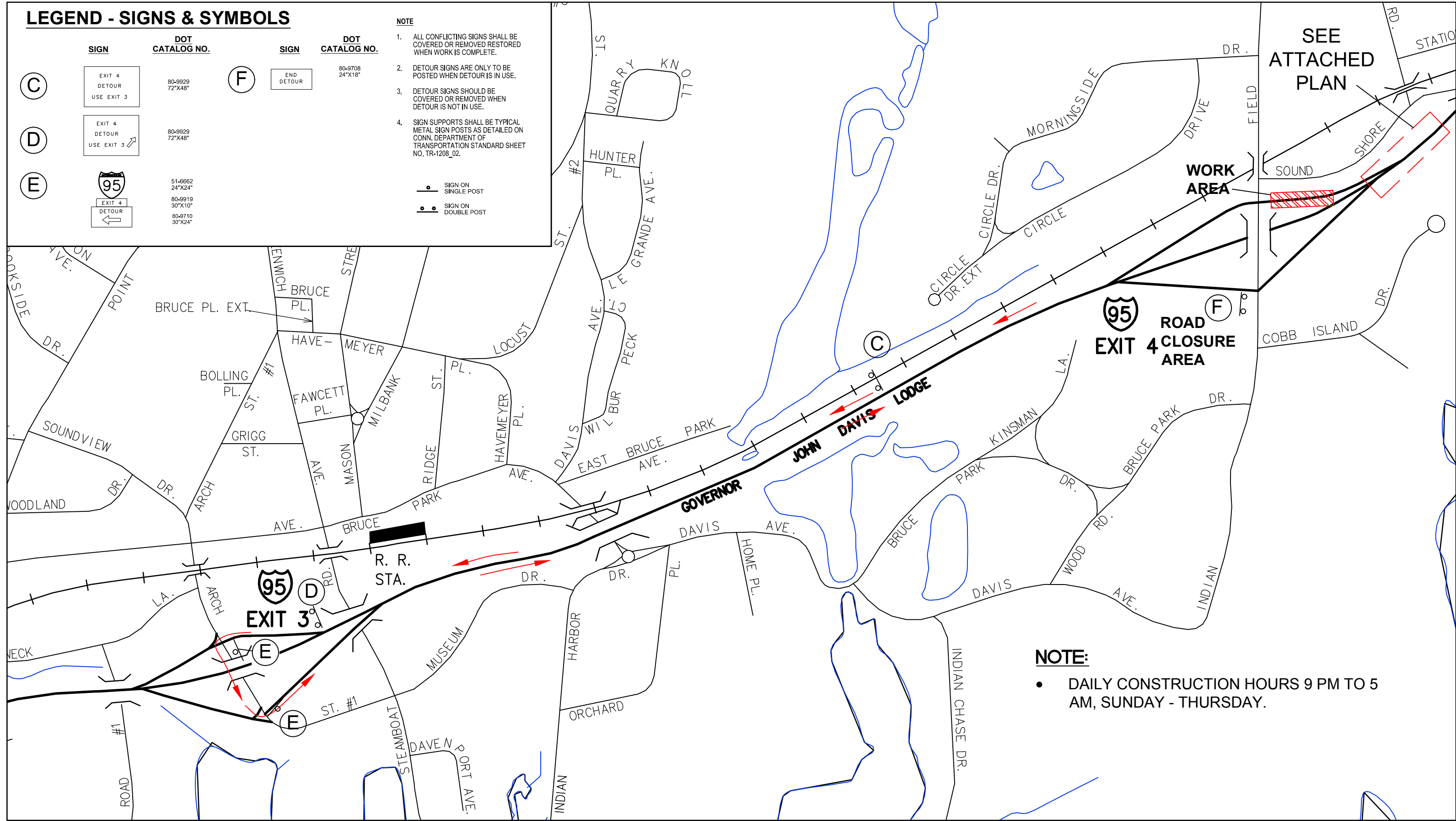
LEGEND - SIGNS & SYMBOLS

NOTE

1. ALL CONFLICTING SIGNS SHALL BE COVERED OR REMOVED RESTORED WHEN WORK IS COMPLETE.
2. DETOUR SIGNS ARE ONLY TO BE POSTED WHEN DETOUR IS IN USE.
3. DETOUR SIGNS SHOULD BE COVERED OR REMOVED WHEN DETOUR IS NOT IN USE.
4. SIGN SUPPORTS SHALL BE TYPICAL METAL SIGN POSTS AS DETAILED ON CONN. DEPARTMENT OF TRANSPORTATION STANDARD SHEET NO. TR-1208_02.

- SIGN ON SINGLE POST
- SIGN ON DOUBLE POST

SIGN	DOT CATALOG NO.	SIGN	DOT CATALOG NO.
	80-9929 72"x48"		80-9708 24"x18"
	80-9929 72"x48"		
	51-6662 24"x24" 80-9919 30"x10" 80-9710 30"x24"		



SEE ATTACHED PLAN

95 ROAD EXIT 4 CLOSURE AREA

95 EXIT 3

NOTE:

- DAILY CONSTRUCTION HOURS 9 PM TO 5 AM, SUNDAY - THURSDAY.



Alfred Benesch & Company www.benesch.com
120 Hebron Avenue • Glastonbury, Connecticut 06033
Phone: (860) 633-8341 • Fax: (860) 633-1068



1" = 500'

DETOUR PLAN 2
EXIT 4 I-95 SOUTH BOUND DETOUR
EVERSOURCE 115 KV Underground Transmissions Facility
From CosCob Substation To New Greenwich Substation

CHANGEABLE MESSAGE SIGN

PRE DETOUR
MESSAGE

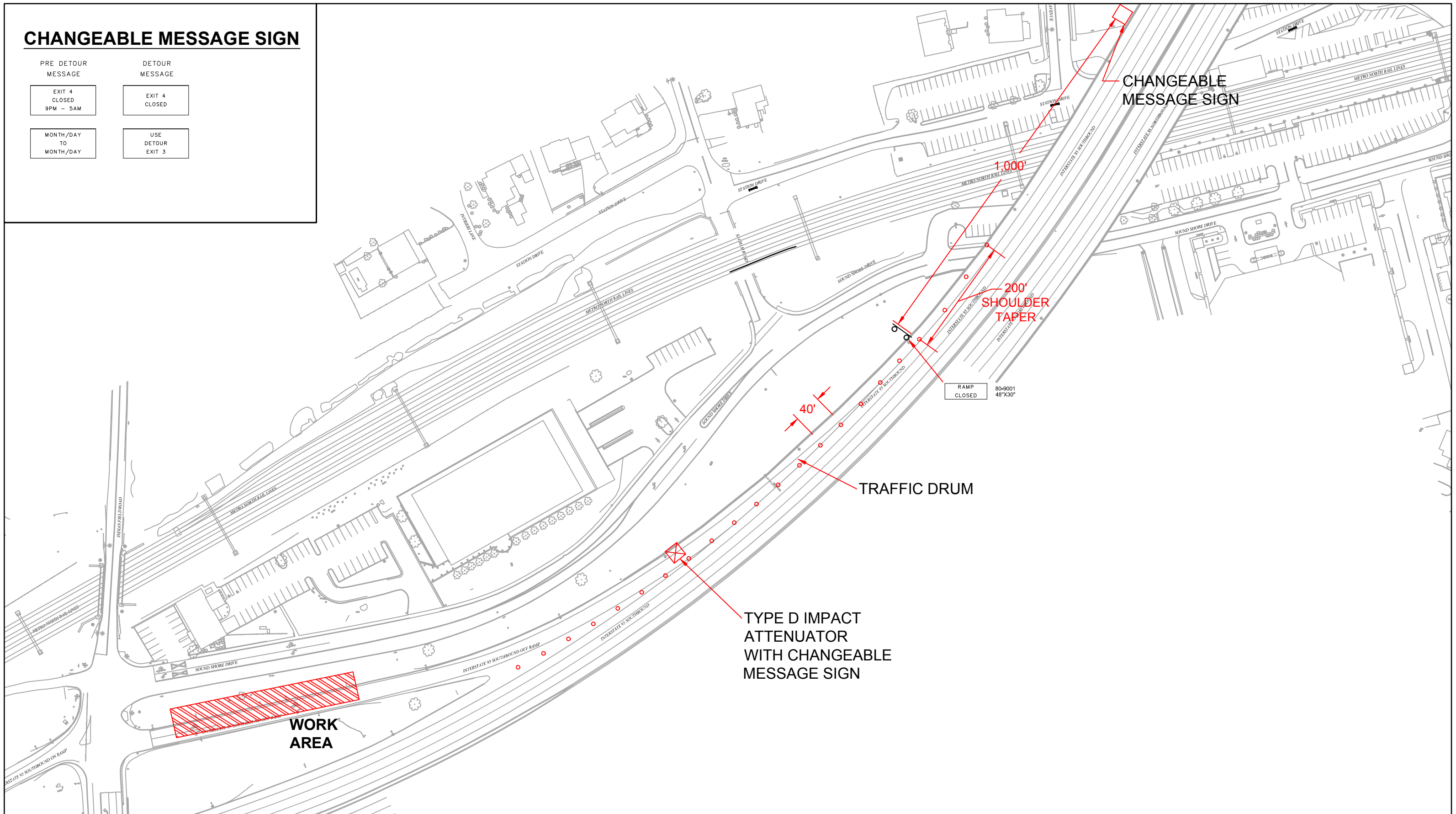
EXIT 4
CLOSED
9PM - 5AM

MONTH/DAY
TO
MONTH/DAY

DETOUR
MESSAGE

EXIT 4
CLOSED

USE
DETOUR
EXIT 3



Alfred Benesch & Company www.benesch.com
120 Hebron Avenue • Glastonbury, Connecticut 06033
Phone: (860) 633-8341 • Fax: (860) 633-1068



1" = 120'

DETOUR PLAN 2 - ATTACHMENT PLAN EXIT 4 I-95 SOUTH BOUND DETOUR

EVERSOURCE 115 KV Underground Transmissions Facility
From CosCob Substation To New Greenwich Substation