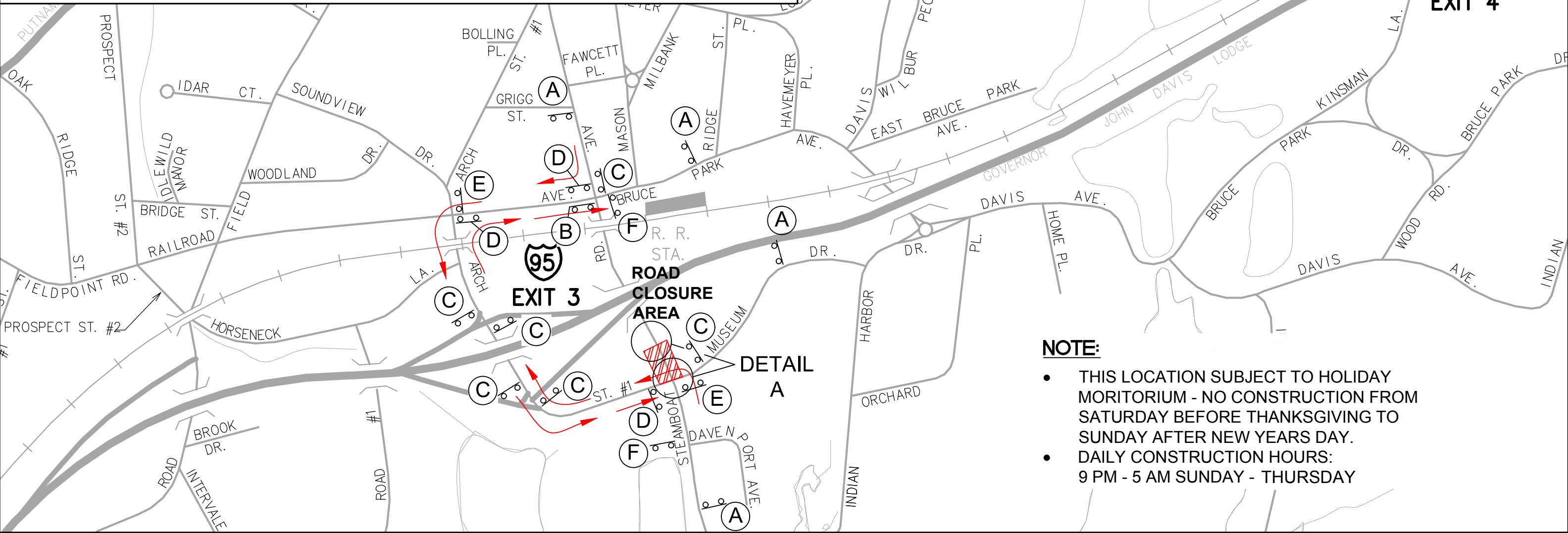
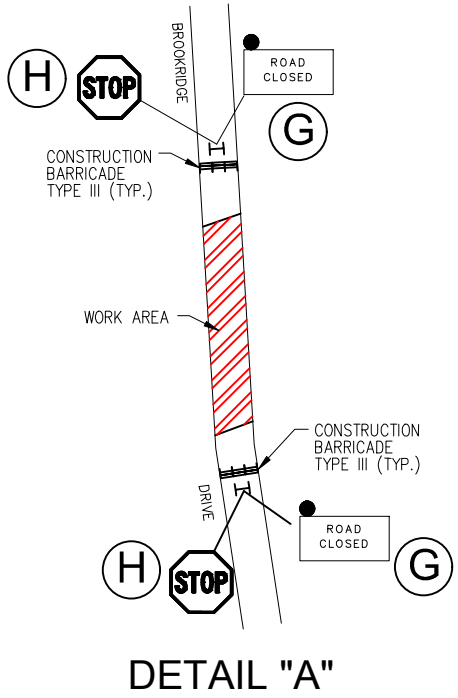
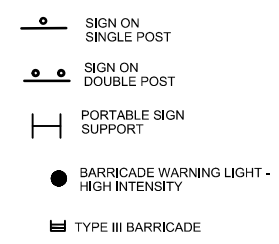


LEGEND - SIGNS & SYMBOLS

SIGN	DOT CATALOG NO.	SIGN	DOT CATALOG NO.
(A) STEAMBOAT ROAD CLOSED AHEAD NO THRU TRAFFIC	80-9928 (BLANK) VARIABLE LEGEND 60"x30"	(F) END DETOUR	80-9708 24"x18"
(B) ROAD CLOSED AHEAD LOCAL TRAFFIC ONLY	80-9077 60"x30"	(G) ROAD CLOSED	80-9080 48"x30"
(C) STEAMBOAT ROAD DETOUR (Up Arrow)	80-9916 48"x10" 80-9710 24"x30"	(H) STOP	31-0557 48"
(D) STEAMBOAT ROAD DETOUR (Right Arrow)	80-9916 48"x10" 80-9710 24"x30"		
(E) STEAMBOAT ROAD DETOUR (Left Arrow)	80-9916 48"x10" 80-9710 24"x30"		

- NOTE**
- ALL CONFLICTING SIGNS SHALL BE COVERED OR REMOVED.
 - DETOUR SIGNS ARE ONLY TO BE POSTED WHEN DETOUR IS IN USE.
 - DETOUR SIGNS SHOULD BE COVERED OR REMOVED WHEN DETOUR IS NOT IN USE.
 - SIGN SUPPORTS SHALL BE TYPICAL METAL SIGN POSTS AS DETAILED ON CONN. DEPARTMENT OF TRANSPORTATION STANDARD SHEET NO. TR-1208_02.
 - "ROAD CLOSED" AND "STOP" (31-0557) SIGNS SHALL BE DISPLAYED IN FRONT OF TYPE III BARRICADES.



- NOTE:**
- THIS LOCATION SUBJECT TO HOLIDAY MORITORIUM - NO CONSTRUCTION FROM SATURDAY BEFORE THANKSGIVING TO SUNDAY AFTER NEW YEARS DAY.
 - DAILY CONSTRUCTION HOURS: 9 PM - 5 AM SUNDAY - THURSDAY



Alfred Benesch & Company • www.benesch.com
120 Hebron Avenue • Glastonbury, Connecticut 06033
Phone: (860) 633-8341 • Fax: (860) 633-1068



1" = 500'

DETOUR PLAN 10
STEAMBOAT ROAD DETOUR
EVERSOURCE 115 KV Underground Transmissions Facility
From CosCob Substation To New Greenwich Substation