

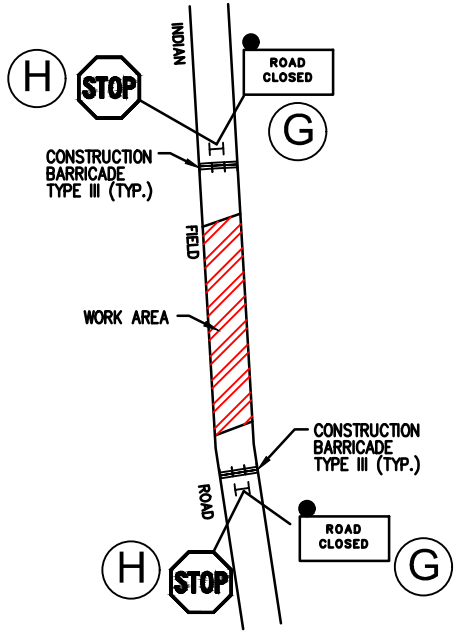
LEGEND - SIGNS & SYMBOLS

SIGN	DOT CATALOG NO.	SIGN	DOT CATALOG NO.
(A) DAVIS AVENUE CLOSED AHEAD NO THRU TRAFFIC	80-9928 (BLANK) VARIABLE LEGEND 60"x30"	(F) END DETOUR	80-9708 24"x18"
(B) ROAD CLOSED AHEAD LOCAL TRAFFIC ONLY	80-9077 60"x30"	(G) ROAD CLOSED	80-9080 48"x30"
(C) DAVIS AVENUE DETOUR (up arrow)	80-9916 48"x10" 80-9710 24"x30"	(H) STOP	31-0557 48"
(D) DAVIS AVENUE DETOUR (right arrow)	80-9916 48"x10" 80-9710 24"x30"	(I) DAVIS AVENUE DETOUR (right arrow)	80-9916 48"x10" 80-9710 24"x30"
(E) DAVIS AVENUE DETOUR (left arrow)	80-9916 48"x10" 80-9710 24"x30"	(J) DAVIS AVENUE DETOUR (up arrow)	80-9916 48"x10" 80-9710 24"x30"
		(K) DAVIS AVENUE DETOUR (down arrow)	80-9916 48"x10" 80-9710 24"x30"

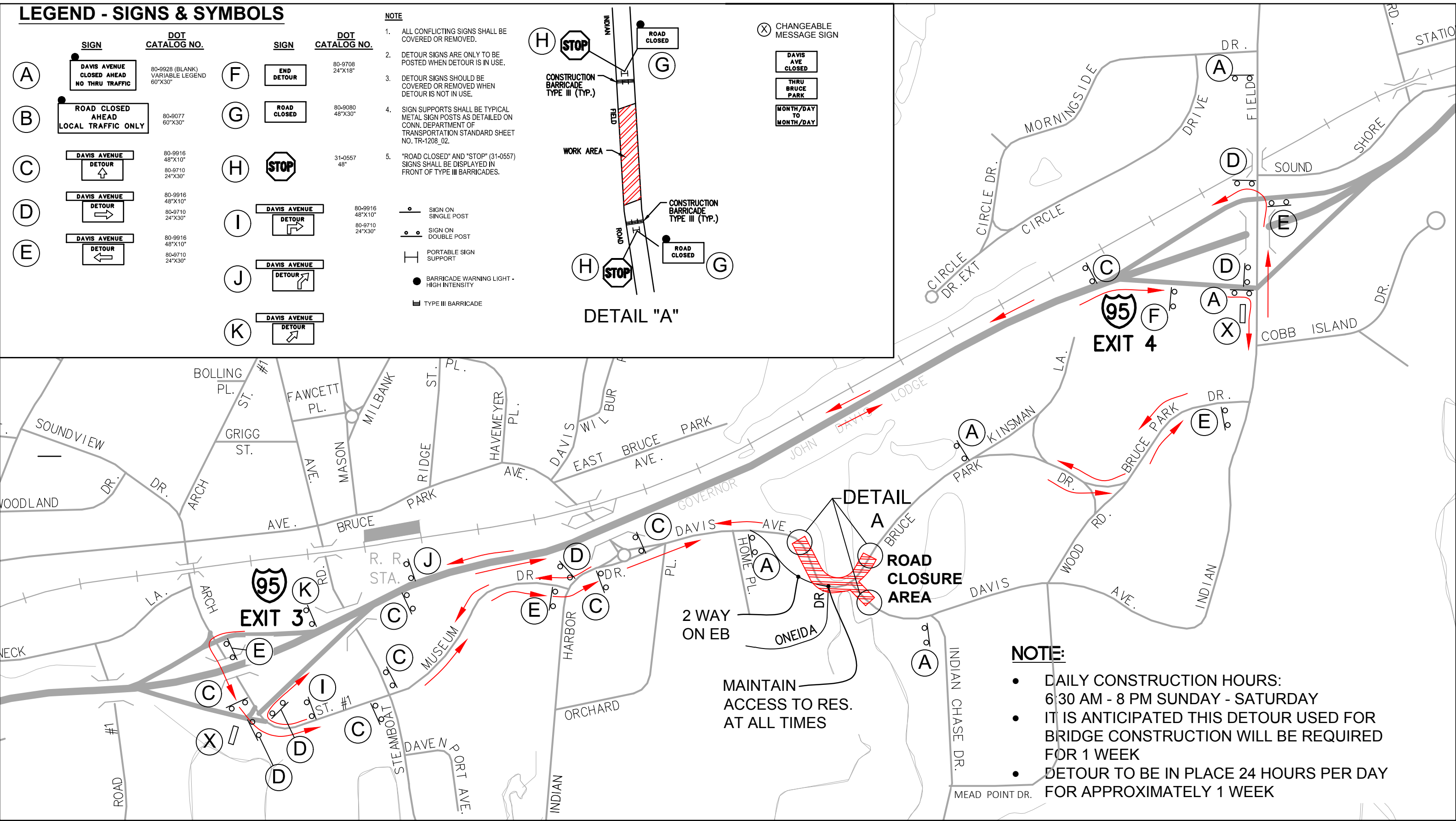
NOTE

1. ALL CONFLICTING SIGNS SHALL BE COVERED OR REMOVED.
2. DETOUR SIGNS ARE ONLY TO BE POSTED WHEN DETOUR IS IN USE.
3. DETOUR SIGNS SHOULD BE COVERED OR REMOVED WHEN DETOUR IS NOT IN USE.
4. SIGN SUPPORTS SHALL BE TYPICAL METAL SIGN POSTS AS DETAILED ON CONN. DEPARTMENT OF TRANSPORTATION STANDARD SHEET NO. TR-1208_02.
5. "ROAD CLOSED" AND "STOP" (31-0557) SIGNS SHALL BE DISPLAYED IN FRONT OF TYPE III BARRICADES.

- SIGN ON SINGLE POST
- SIGN ON DOUBLE POST
- ┆ PORTABLE SIGN SUPPORT
- BARRICADE WARNING LIGHT - HIGH INTENSITY
- ▬ TYPE III BARRICADE



- (X) CHANGEABLE MESSAGE SIGN
- DAVIS AVE CLOSED
- THRU BRUCE PARK
- MONTH/DAY TO MONTH/DAY



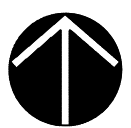
MAINTAIN ACCESS TO RES. AT ALL TIMES

NOTE:

- DAILY CONSTRUCTION HOURS: 6:30 AM - 8 PM SUNDAY - SATURDAY
- IT IS ANTICIPATED THIS DETOUR USED FOR BRIDGE CONSTRUCTION WILL BE REQUIRED FOR 1 WEEK
- DETOUR TO BE IN PLACE 24 HOURS PER DAY FOR APPROXIMATELY 1 WEEK



Alfred Benesch & Company • www.benesch.com
120 Hebron Avenue • Glastonbury, Connecticut 06033
Phone: (860) 633-8341 • Fax: (860) 633-1068



1" = 500'

DETOUR PLAN 3 DAVIS AVENUE DETOUR

EVERSOURCE 115 KV Underground Transmissions Facility
At The Indian Harbor Crossing