

Proposed Carver to Kingston Reliability Project



Department of Public Utilities (DPU) Public Hearing

Towns of Carver, Plympton, and Kingston

October 27, 2020

Proposed Carver to Kingston Reliability Project

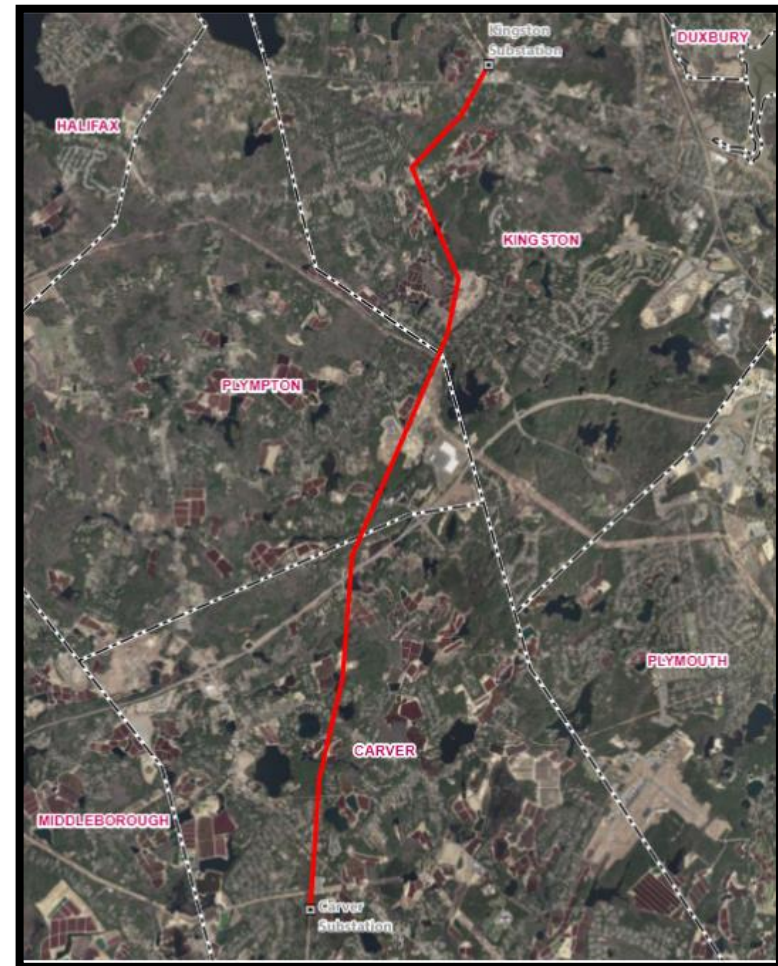
Table of Contents

- **Proposed Project Overview**
- **Project Need**
- **Proposed Project Cross Sections**
- **Typical Overhead Construction**
- **Estimated Project Construction, Permitting and Estimated Timeline**
- **Community Outreach**
- **Contact Information**

Proposed Carver to Kingston Reliability Project

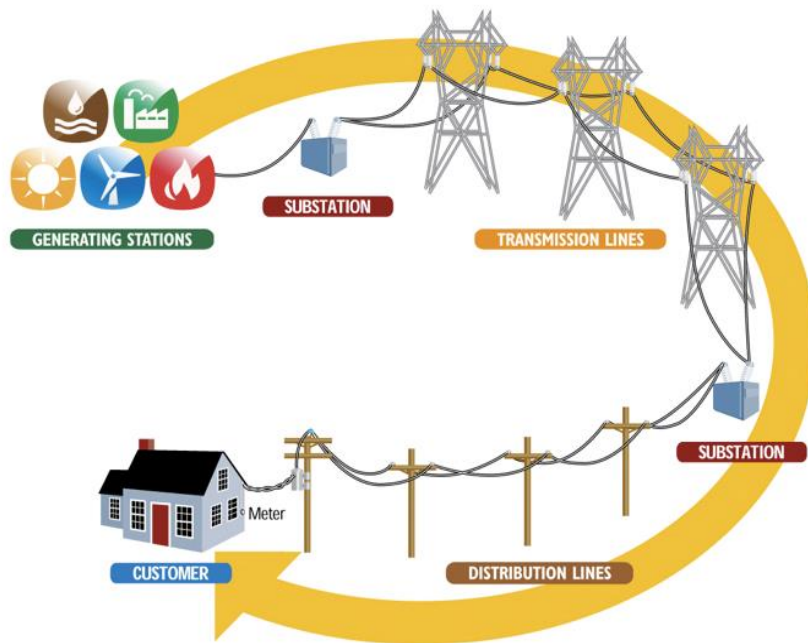
Overview

- Currently, Eversource has one overhead transmission line in the right of way between the Carver Substation, off Route 58, and the Kingston Substation on Pembroke Street in Kingston
- The Carver to Kingston Project proposes constructing a new 8-mile, 115-kV overhead transmission line in the existing right of way to improve system reliability.
- The Proposed Project also includes an approximate 1,200-foot underground section passing the Brook Street Substation and the installation of new equipment at the Carver Substation.



Proposed Carver to Kingston Reliability Project

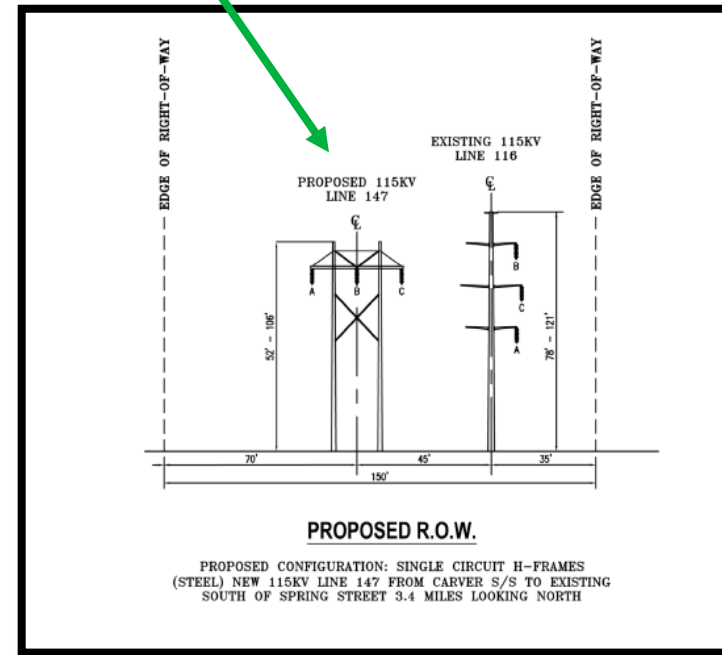
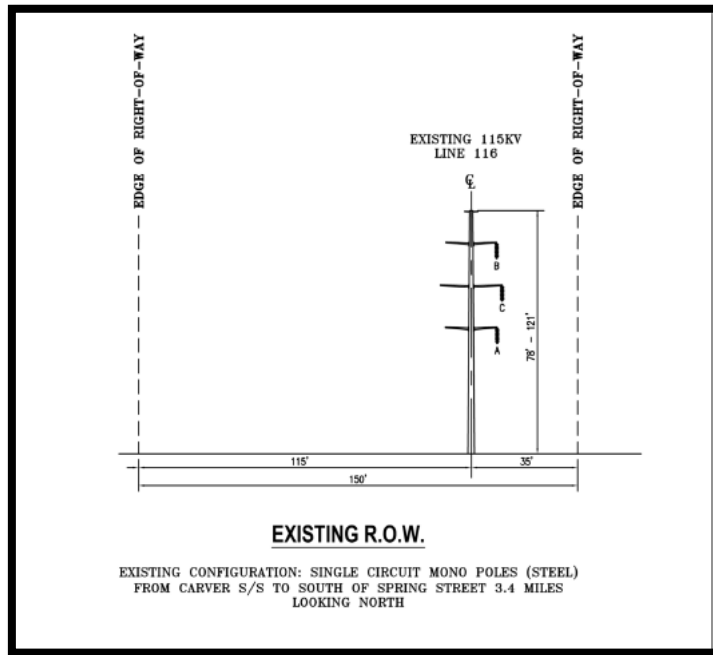
Project Need



- A reliable electrical transmission grid is vital to the safety, security and economic prosperity of the region. The transmission system serves a critical role to ensure the electricity flows with a high degree of reliability to where power is needed.
- **Overload:** Two existing transmission lines serving the Kingston area (Kingston, Carver, Plympton, Marshfield, Duxbury, and Plymouth) can become overloaded during certain contingency events, resulting in extremely low voltage and potential outages for Eversource customers. The new transmission line would relieve loading on these transmission lines and prevent interruptions for Eversource customers.
- **Local Reliability:** The Kingston area is supplied by two lines, and the loss of both lines to an event such as a storm would outage the Kingston area representing approximately 26,000 customers. While the loss of two lines is rare, it has happened due to winter storms.

Proposed Carver to Kingston Reliability Project

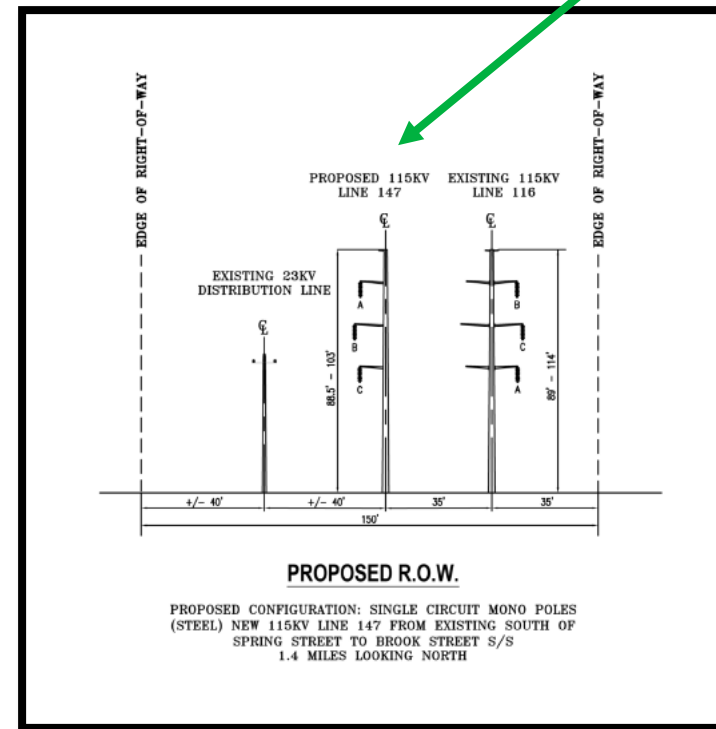
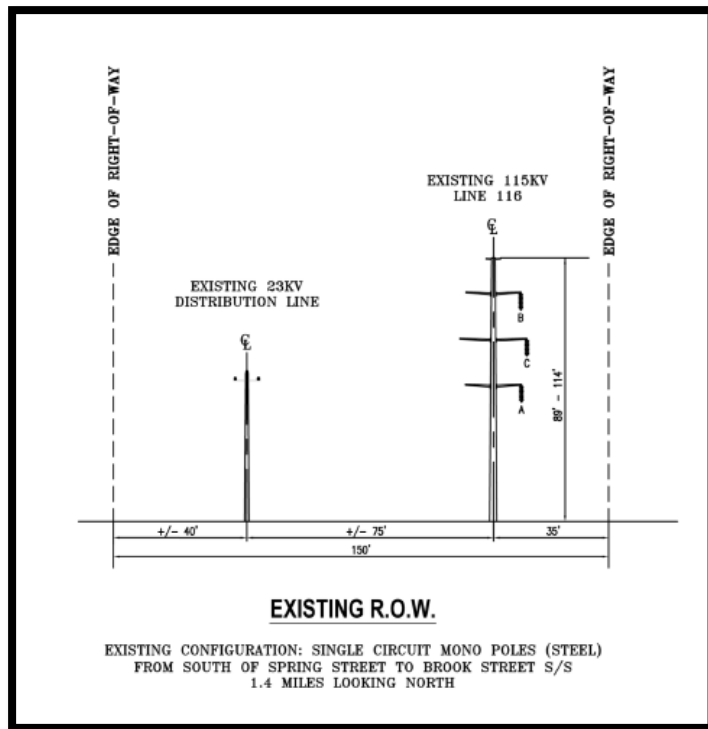
Structure Cross Sections – Carver Substation to Spring Street



In this section, H-frame steel structures are proposed.

Proposed Carver to Kingston Reliability Project

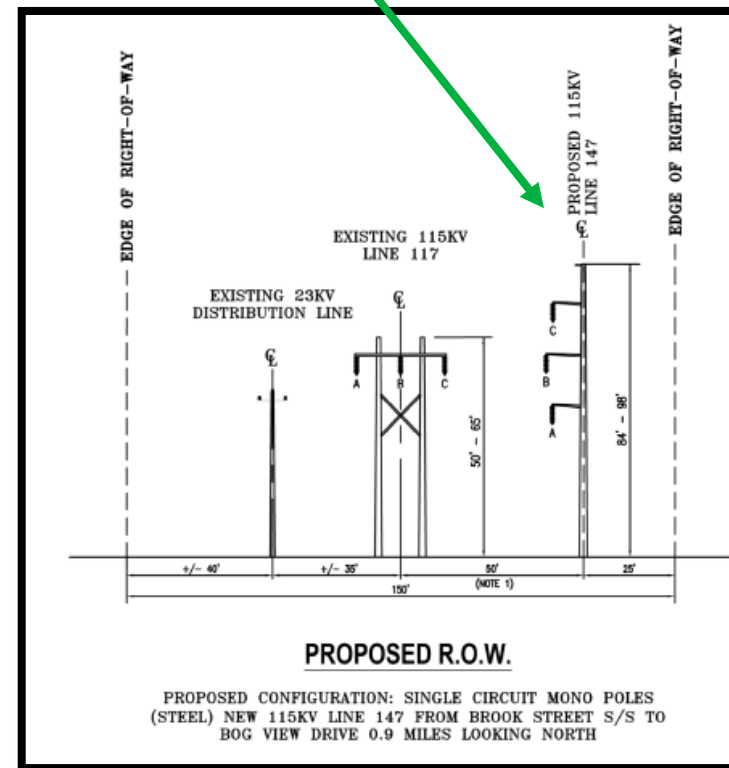
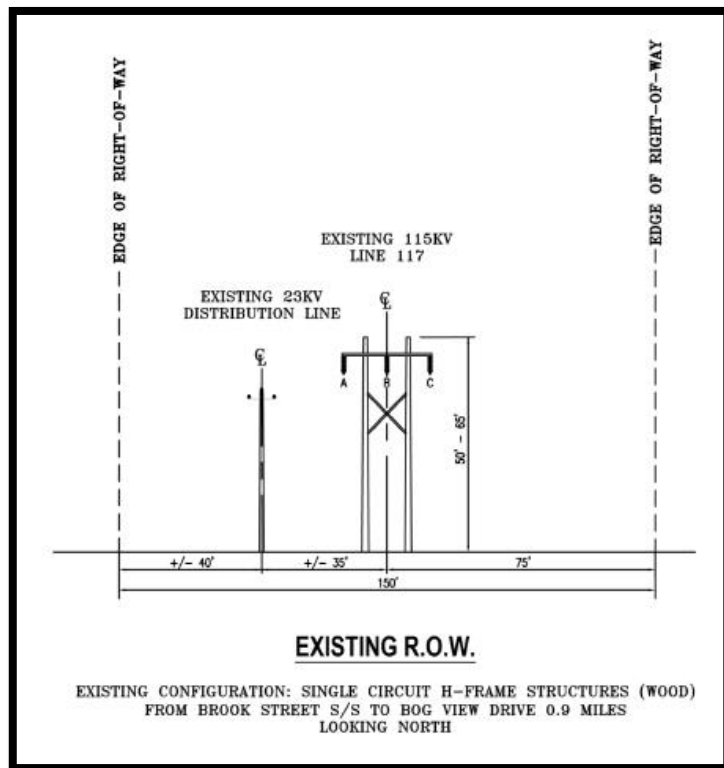
Structure Cross Sections – Spring Street to Brook Street



Due to the existence of a distribution line, the structures in this section will be steel monopoles to adjust to the proper distancing needed between circuits.

Proposed Carver to Kingston Reliability Project

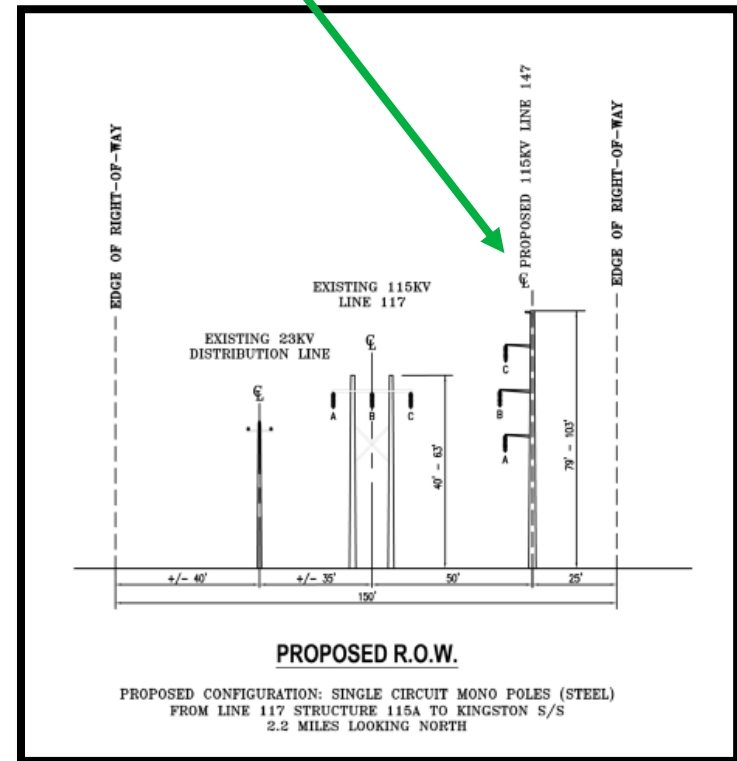
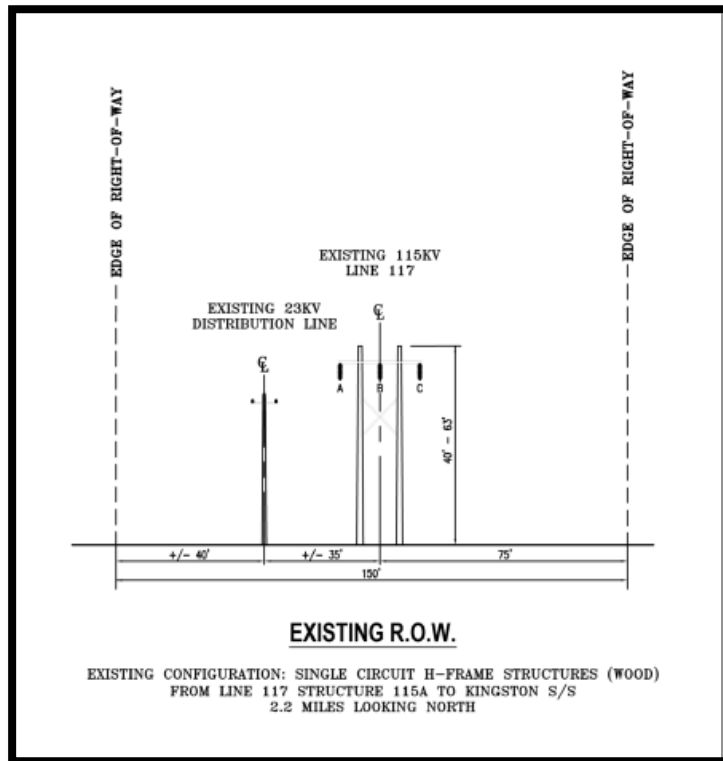
Structure Cross Sections – Brook Street to Bog View Drive



With the distribution line present, the structures in this section will be steel monopoles to allow for proper distancing between circuits.

Proposed Carver to Kingston Reliability Project

Structure Cross Sections – Bog View Rd to Kingston Substation



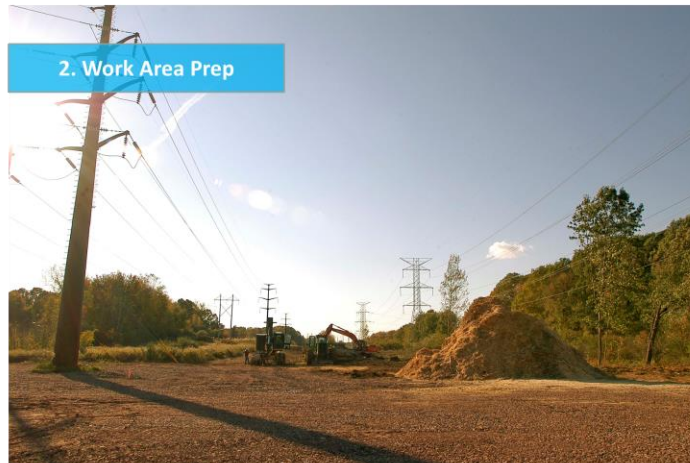
With a distribution line present, the structures in this section will be steel monopoles to allow for proper distancing between circuits.

Typical Overhead Construction

1. Selective Vegetation Removal



2. Work Area Prep



3. Foundation Drilling



4. Pole Installation



5. Wire Stringing



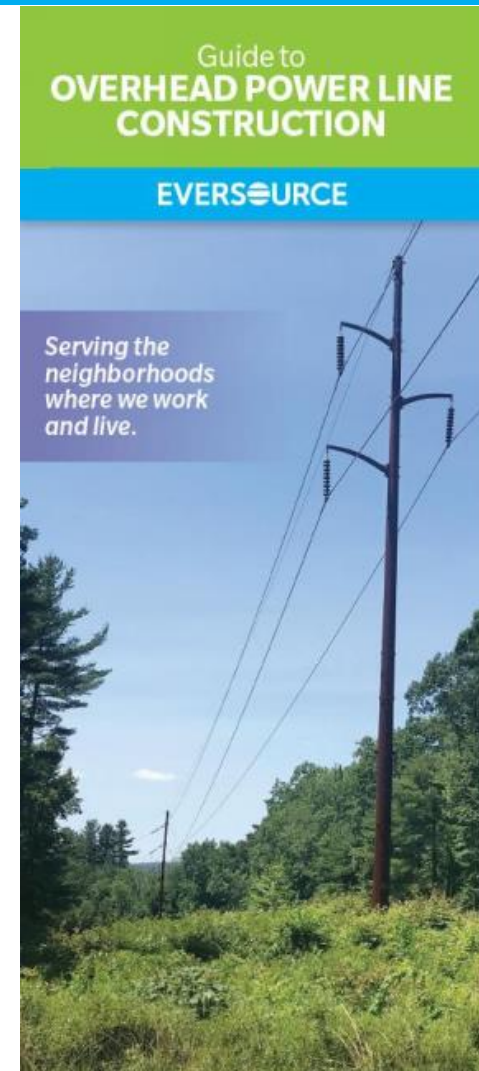
6. Restoration



Proposed Carver to Kingston Reliability Project

Construction

- Where applicable, crews will secure police details and implement traffic management plans to:
 - ✓ Access the right of way
 - ✓ Maintain residential street access
 - ✓ Maintain pedestrian and motorist safety
- Eversource will communicate and work closely with neighbors and nearby businesses in the communities throughout the process by providing:
 - ✓ Informational mailings
 - ✓ Project website with progress updates
 - ✓ Project hotline and e-mail



Proposed Carver to Kingston Reliability Project

Permitting

Permits or Permitting Agency	Jurisdiction
Army Corps of Engineers	Federal
Environmental Protection Agency	Federal
Massachusetts Department of Environmental Protection (MassDEP)	State
Massachusetts Department of Transportation	State
Massachusetts Bay Transit Authority (MBTA)	State
Department of Public Utilities (DPU)	State
Massachusetts Environmental Policy Act	State
Massachusetts Historical Commission	State
Natural Heritage & Endangered Species Program	State
Orders of Condition from Carver, Plympton and Kingston Conservation Commission	Local
Grants of Location (Carver, Kingston, Plympton)	Local

Proposed Carver to Kingston Reliability Project

Estimated Timeline*

	Q3 2019	Q4 2019	Q1 2020	Q2 2020	Q3 2020	Q4 2020	Q1 2021	Q2 2021	Q3 2021	Q4 2021
Community Open House (<i>complete</i>)										
Chapter 72 Application Filed with DPU (<i>complete</i>)										
Public Comment Hearing*										
Other Federal, State & Local Environmental Permitting										
Construction**										
Community Outreach										

* Subject to Change

** Pending Receipt of all Approvals

Anticipated In-Service Date: 2023

Proposed Carver to Kingston Reliability Project

Community Outreach

Stakeholders

- Municipal officials
- State and federal elected officials and regulators
- Property owners & tenants
- Businesses

Project Communication for Municipalities

- Briefings & Presentations
- E-mail updates

Project Communication for the Public

- Outreach that strictly adheres to recommended COVID-19 safety guidelines
- Website: www.Eversource.com/content/carver-kingston-project
- Project Hotline: 1-800-793-2202
- E-Mail: ProjectInfo@Eversource.com



Proposed Carver to Kingston Reliability Project

Team Contact Information

Project Manager

Nathan Dennis

Phone: (774) 404-4400

Email: Nathan.Dennis@eversource.com

Project Community Outreach Representative (Siting and Construction Services)

Megan Aconfora

Phone: (203) 499-9245

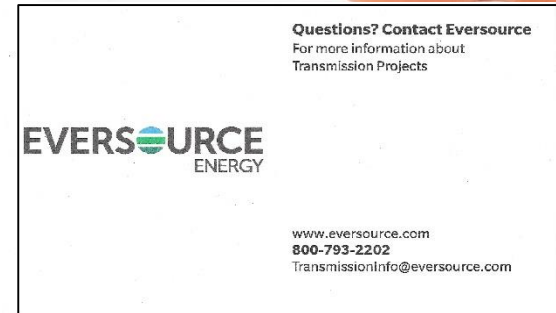
Email: Megan.Aconfora@eversource.com

Community Relations

Ryan Earle

Phone: (617) 541-6284

Email: Ryan.Earle@eversource.com



For the Public:

Eversource Transmission Hotline: **1-800-793-2202**

Project Website: www.Eversource.com/content/carver-kingston-project

Project E-mail: ProjectInfo@eversource.com