

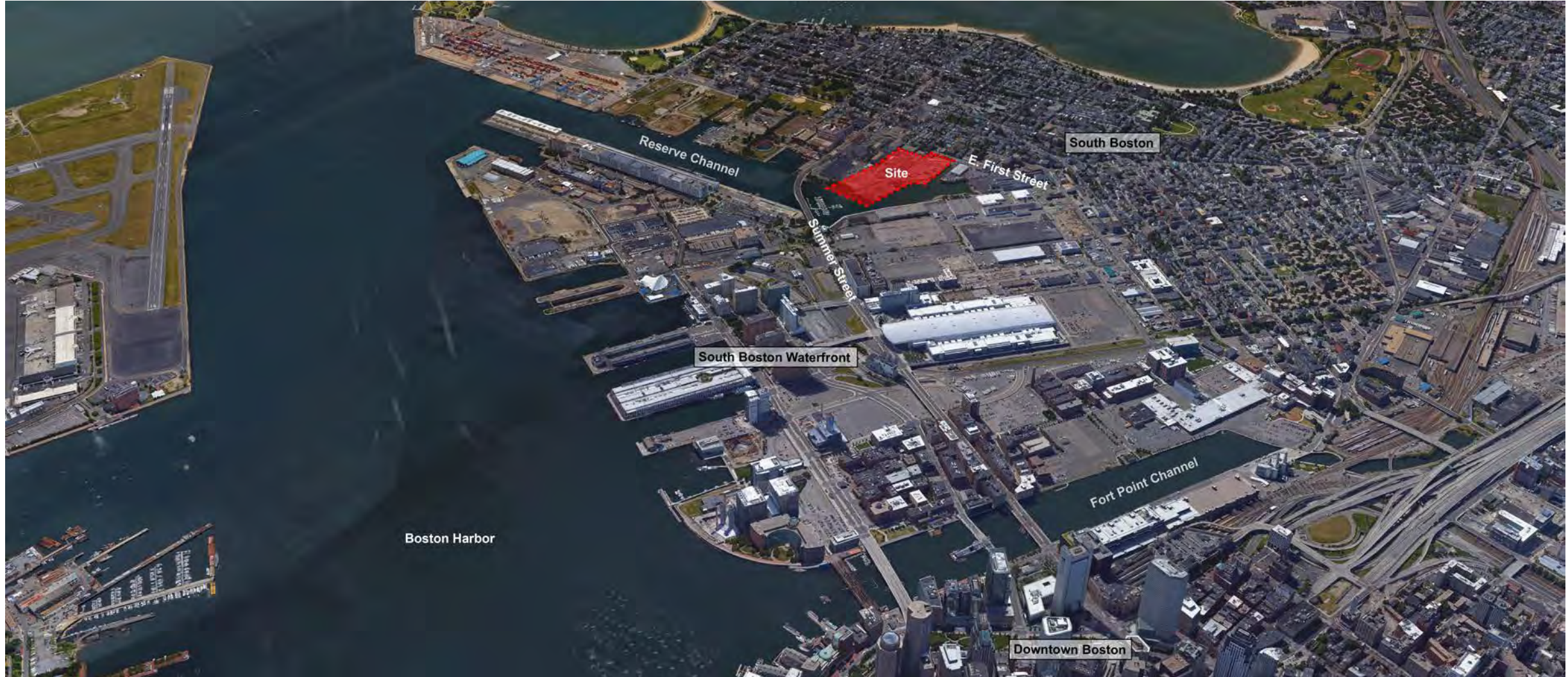


# Eversource Station 385

Initial Concepts  
Revised July 25, 2017

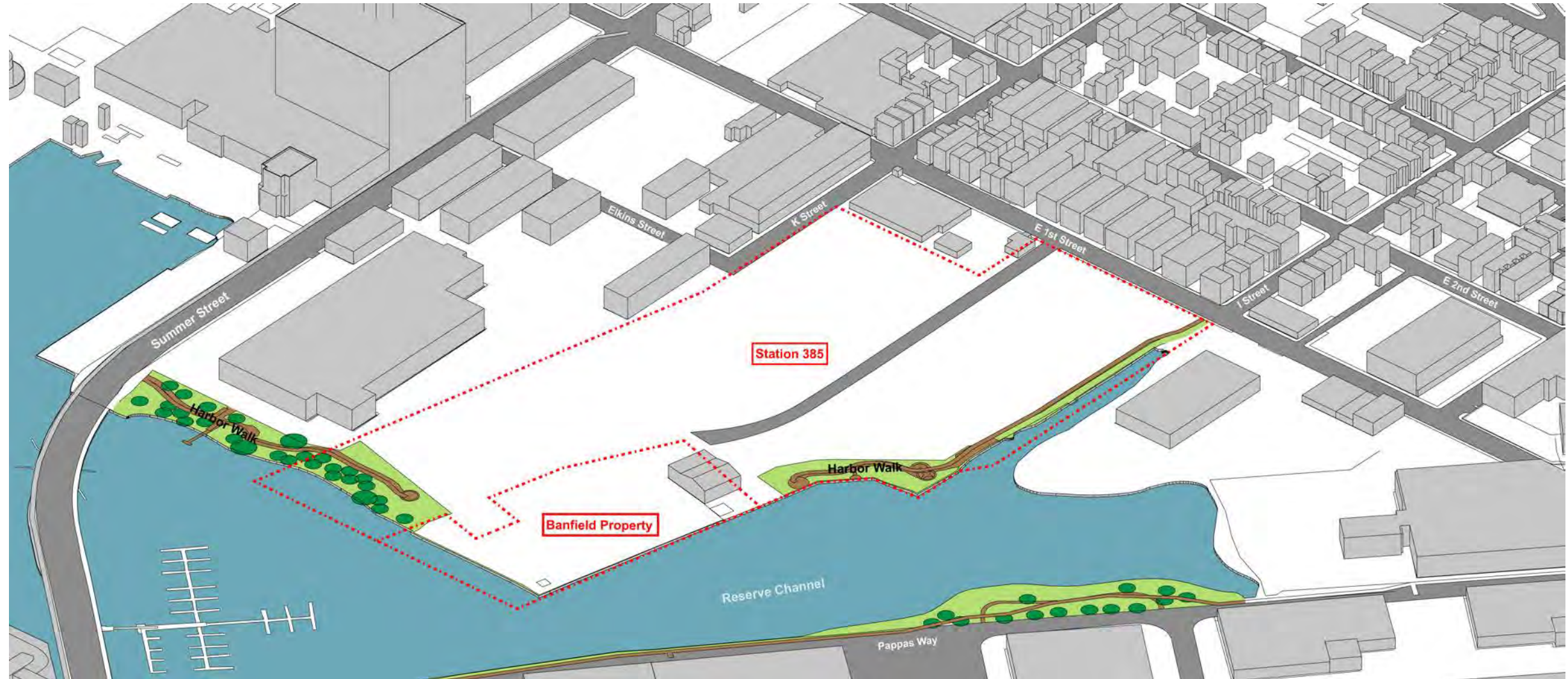


# Context



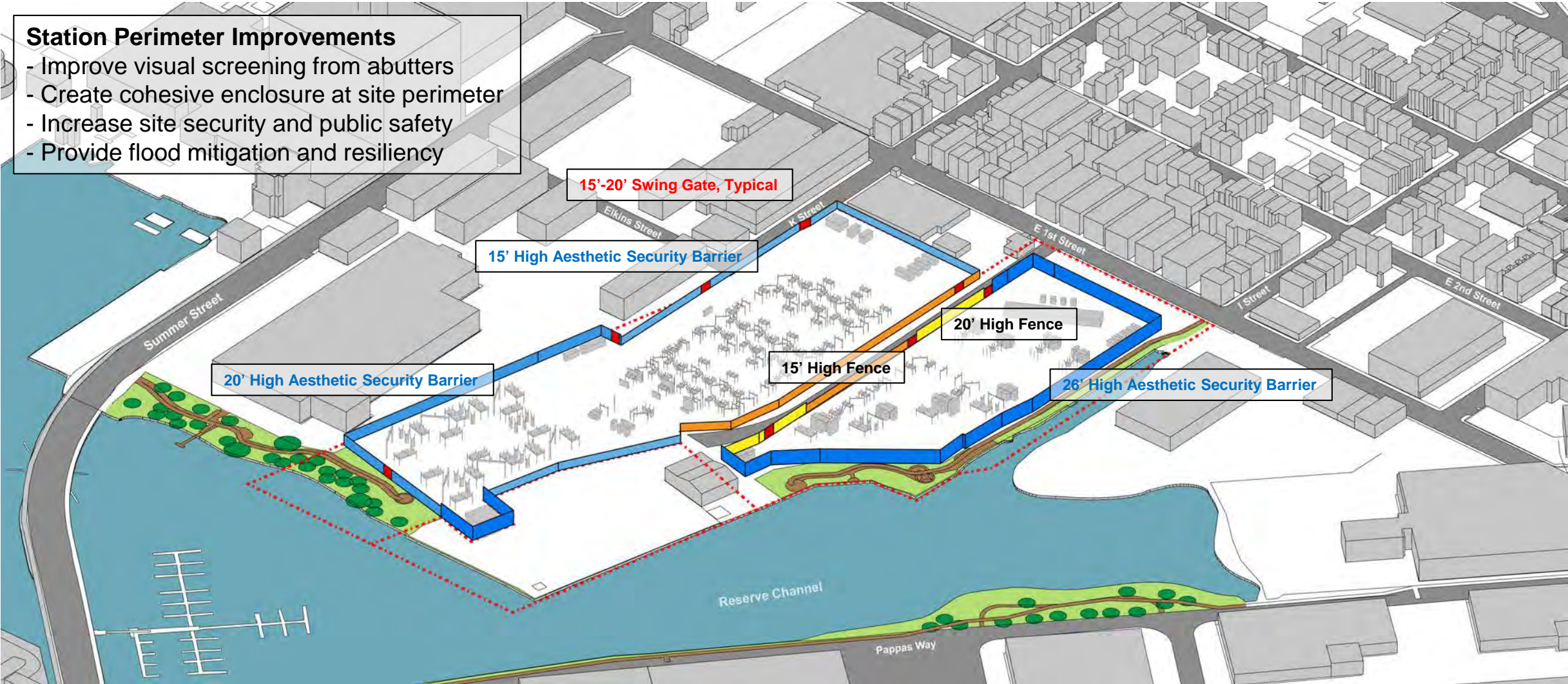


# Site



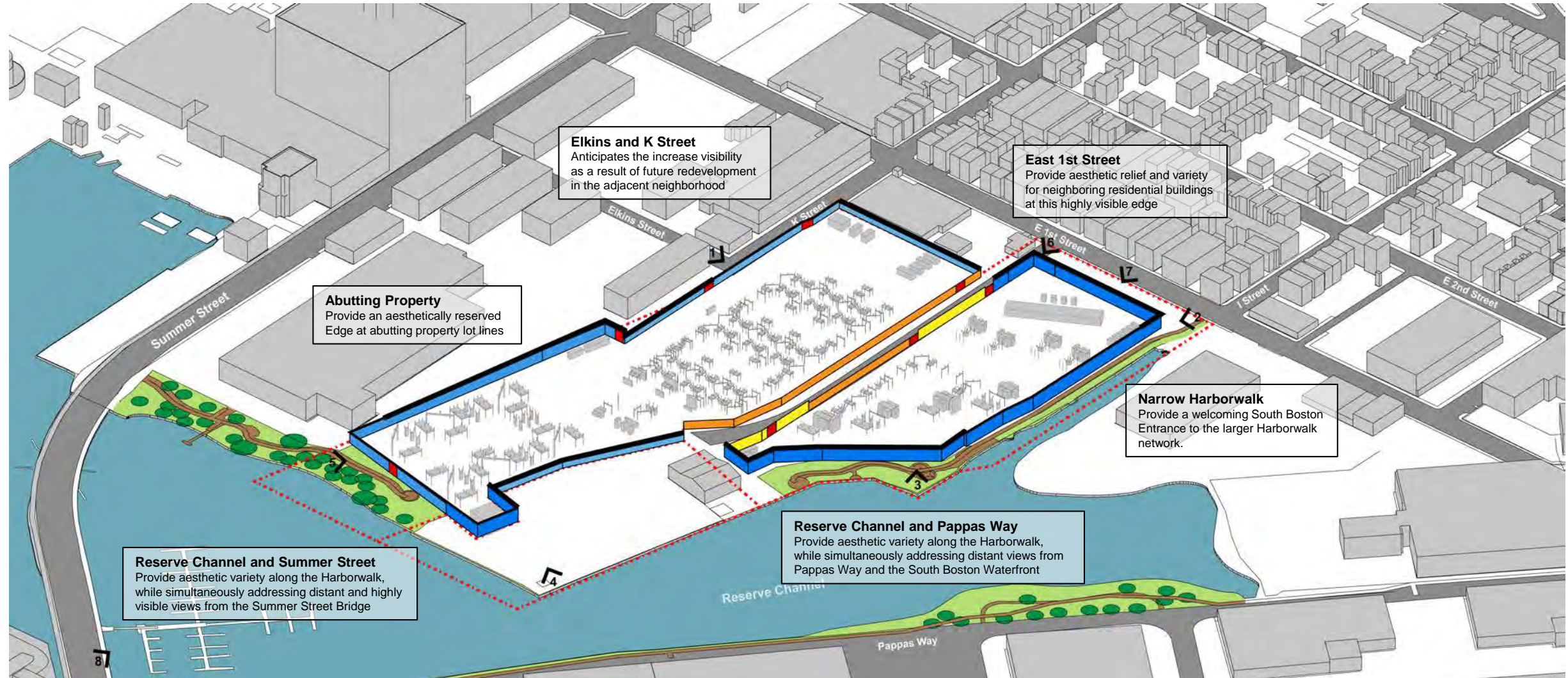


# Security Barrier – Enclose Existing Infrastructure





# Security Barrier – Critical Views

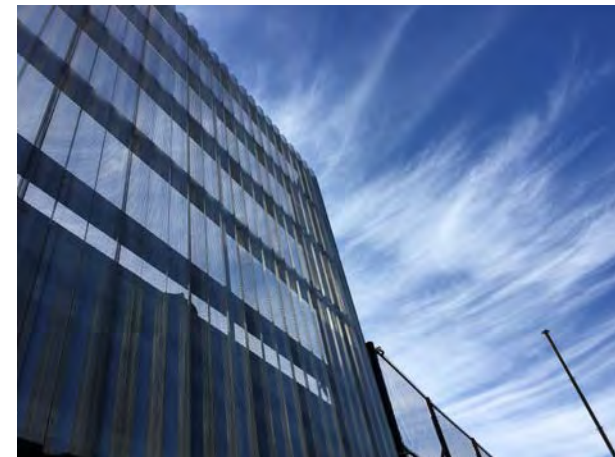
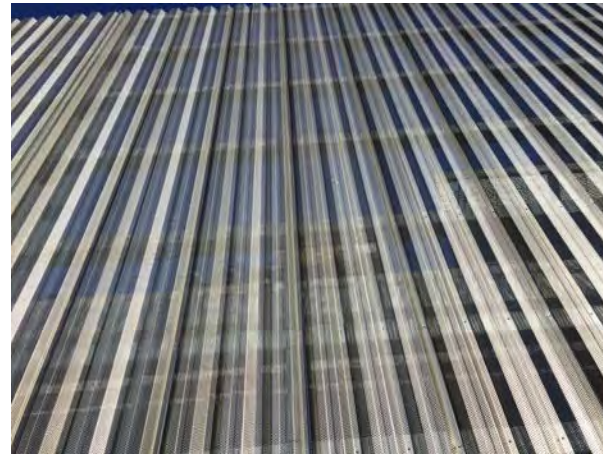
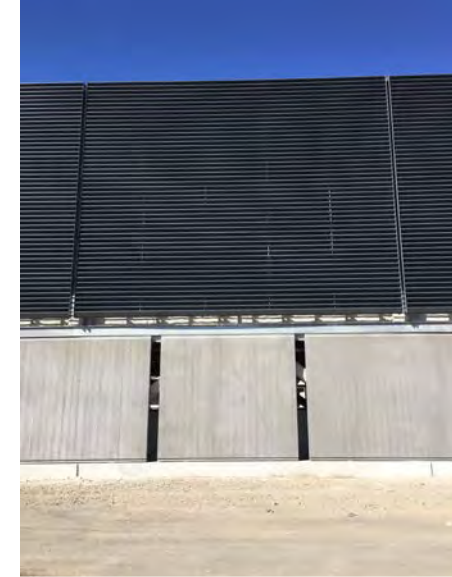
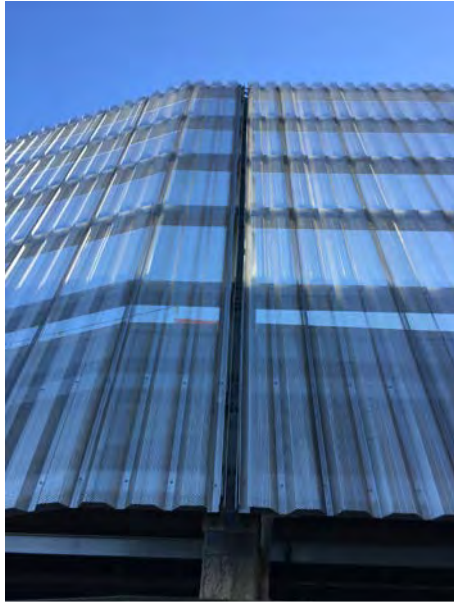


# Site Criteria

- Provide **functional** enclosure for **safety and security**
- Respect **adjacent uses** and critical views
- Create material continuity and **visual interest**
- Allow for **future uses** and development



# Precedent – Station 99





# Precedents – Materials





# Precedents – Patterning





# Design Goals

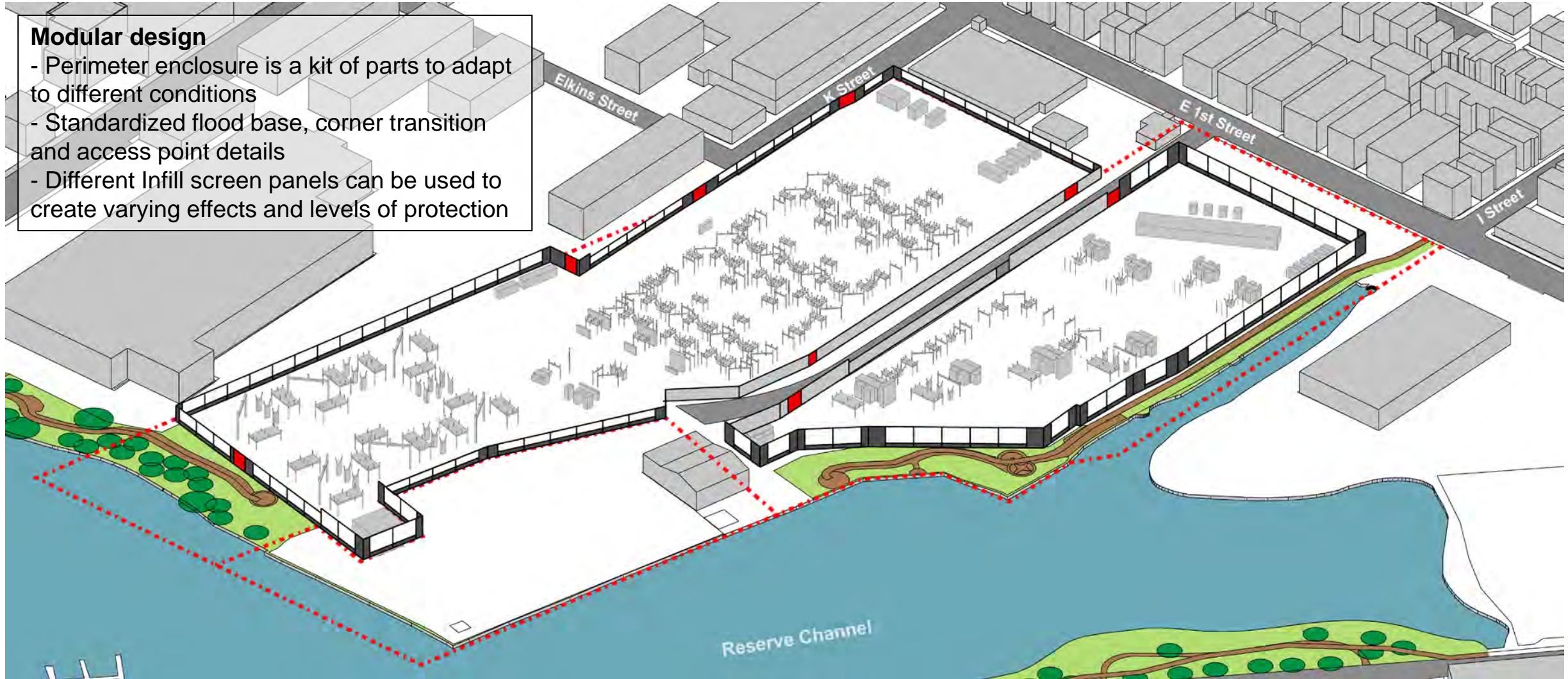
- **Adaptable kit of parts** to meet varying site conditions
- Durable and **distinctive materials**
- Cohesion with **industrial/maritime** context
- Visual expression of **functional** requirements



# Base, Modules, Transitions

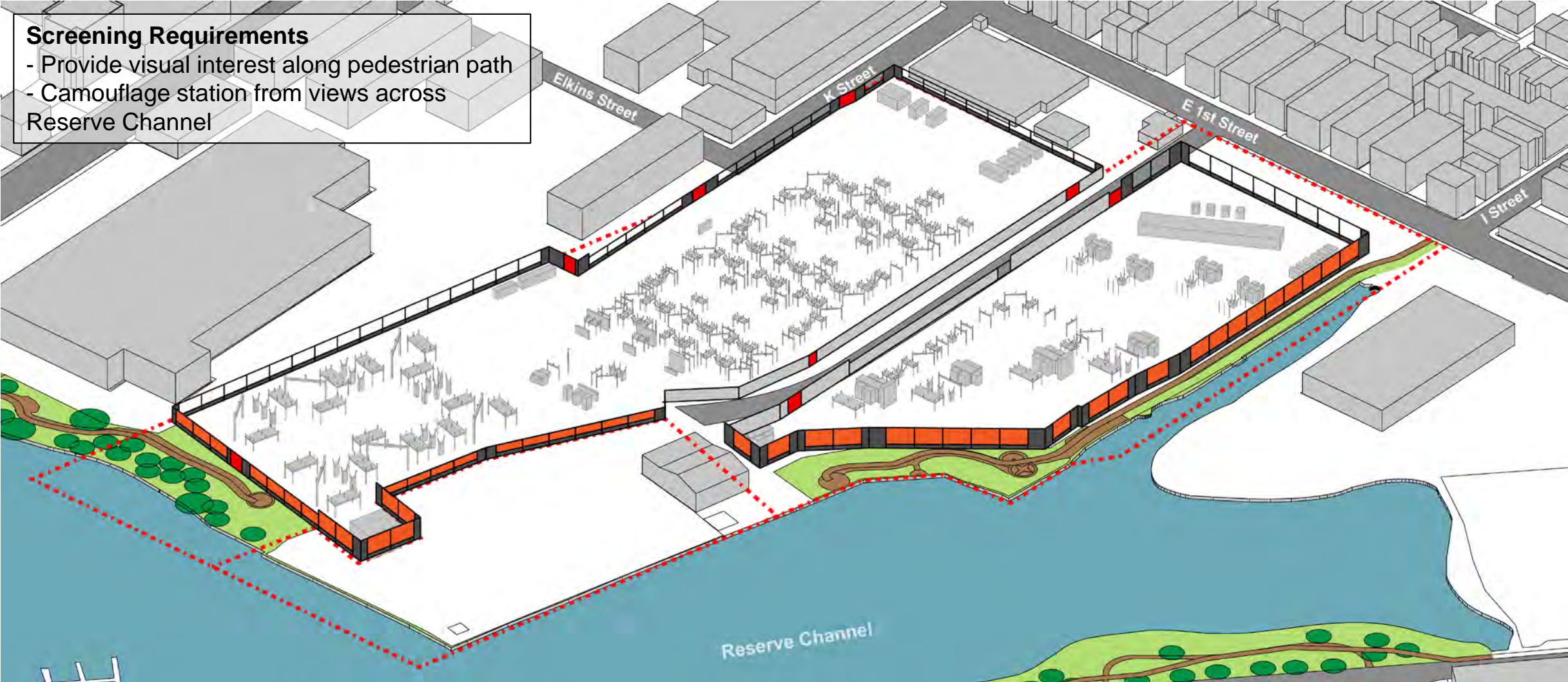
## Modular design

- Perimeter enclosure is a kit of parts to adapt to different conditions
- Standardized flood base, corner transition and access point details
- Different Infill screen panels can be used to create varying effects and levels of protection





# Harborwalk Zone – Perforated Metal Screen





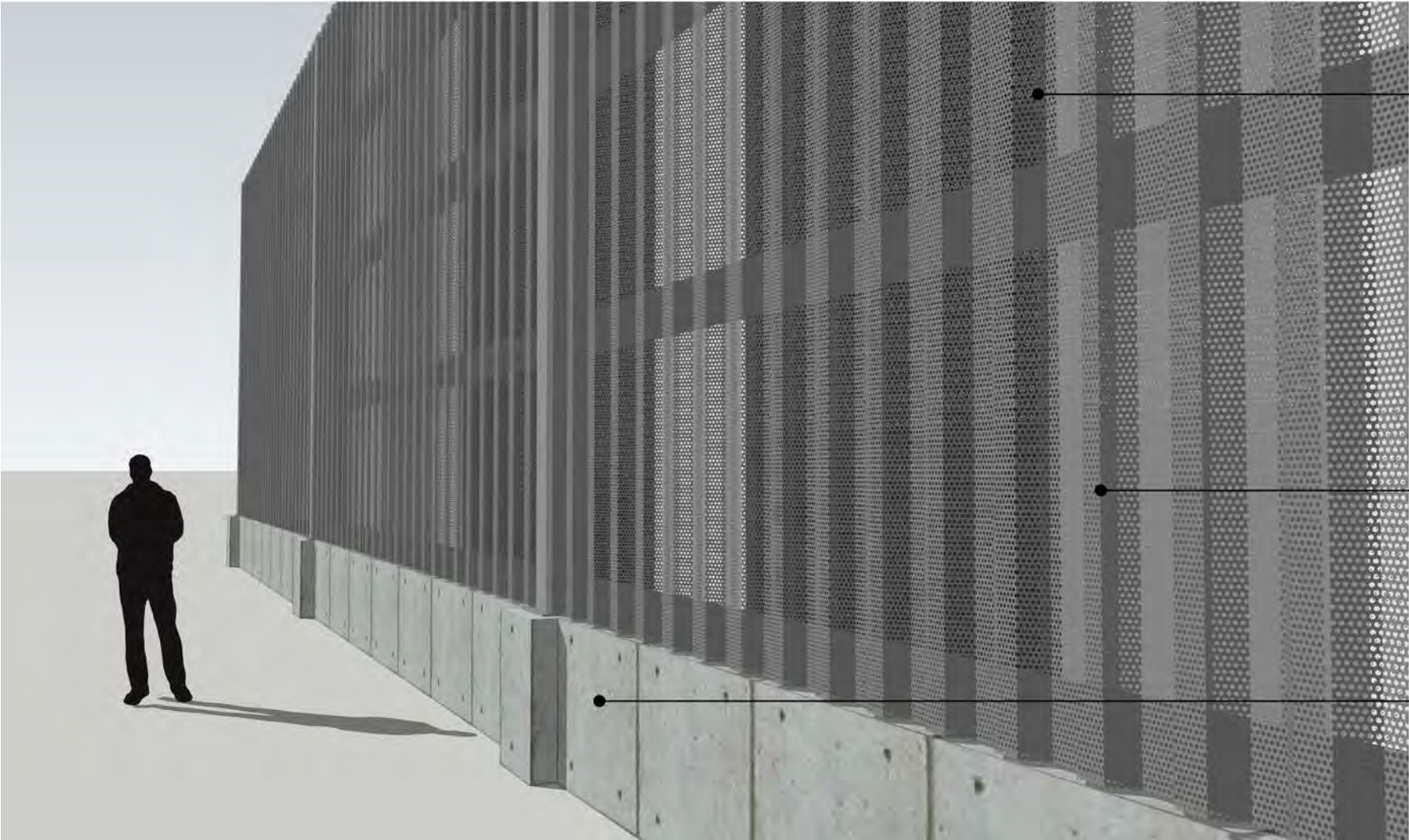
# Wall Type 1 – Layered Perforated Metal Screen - Harborwalk



- Double layered perforated screen creates 96% opacity while allowing light transmission
- Color & Finish variation on back layer creates visual interest
- Concrete wall can step up at critical protection points
- Cast in place base & flood barrier



# Wall Type 1 – Layered Perforated Metal Screen



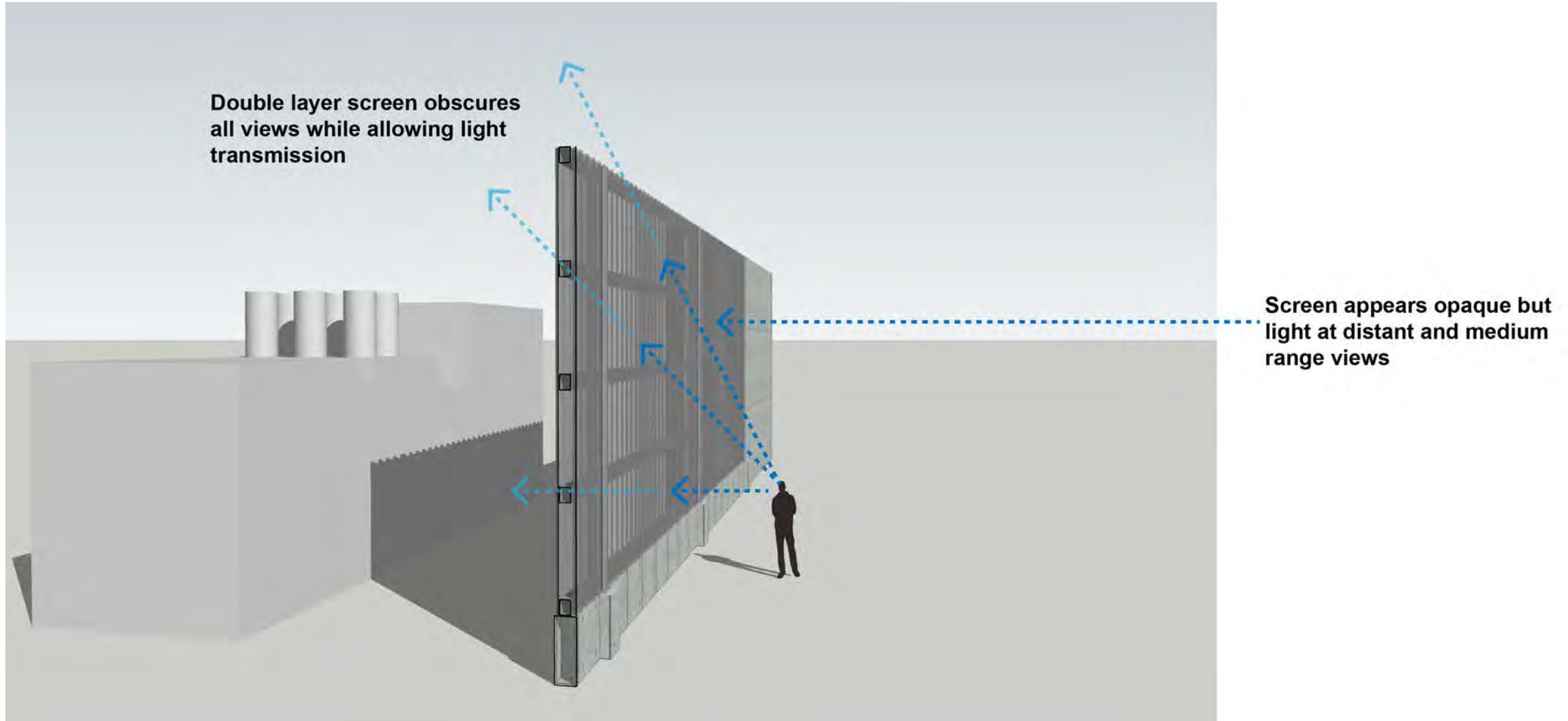
**Double layered perforated screen creates 96% opacity while allowing light transmission**

**Color & Finish variation on back layer creates visual interest**

**Cast in place base & flood barrier**



# Wall Type 1 – Layered Perforated Metal Screen





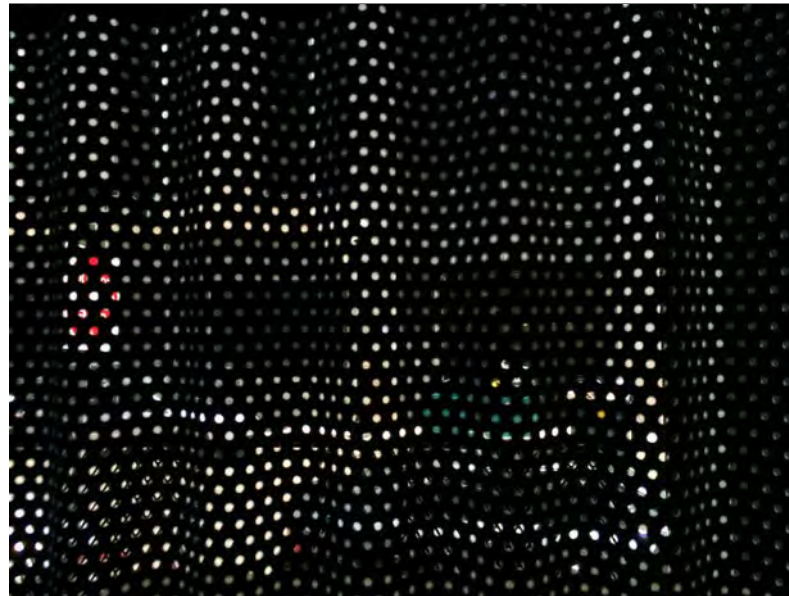
# Perforated Mesh Layering Test

Mesh Layer 1 – Opacity 60%



(As used at Station 99)

Mesh Layer 2 – Opacity 90%

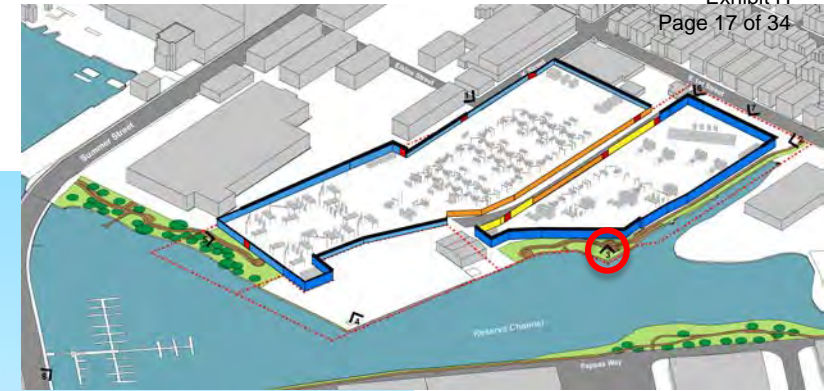
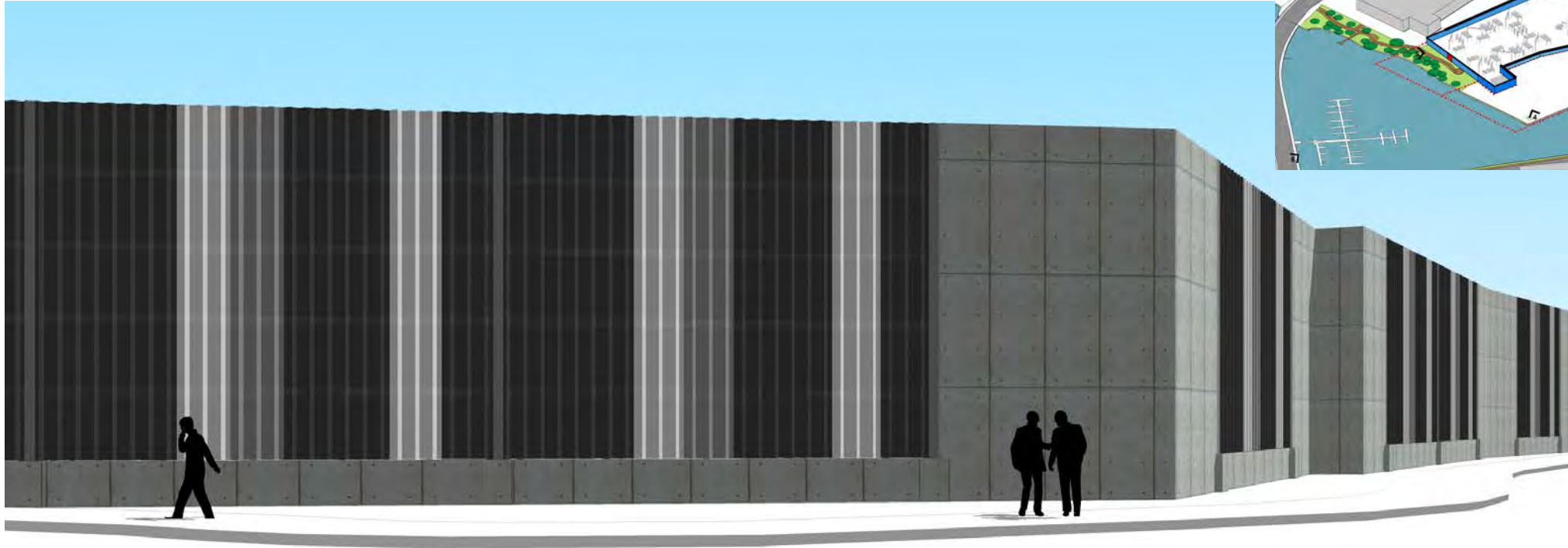


Mesh Layer 1 and 2 – Opacity 96%



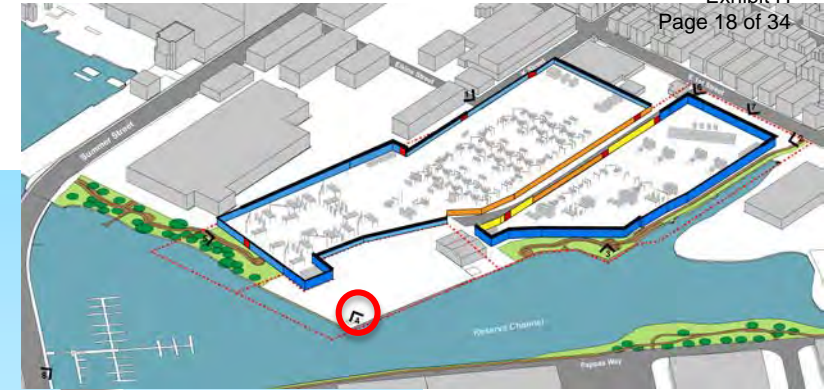
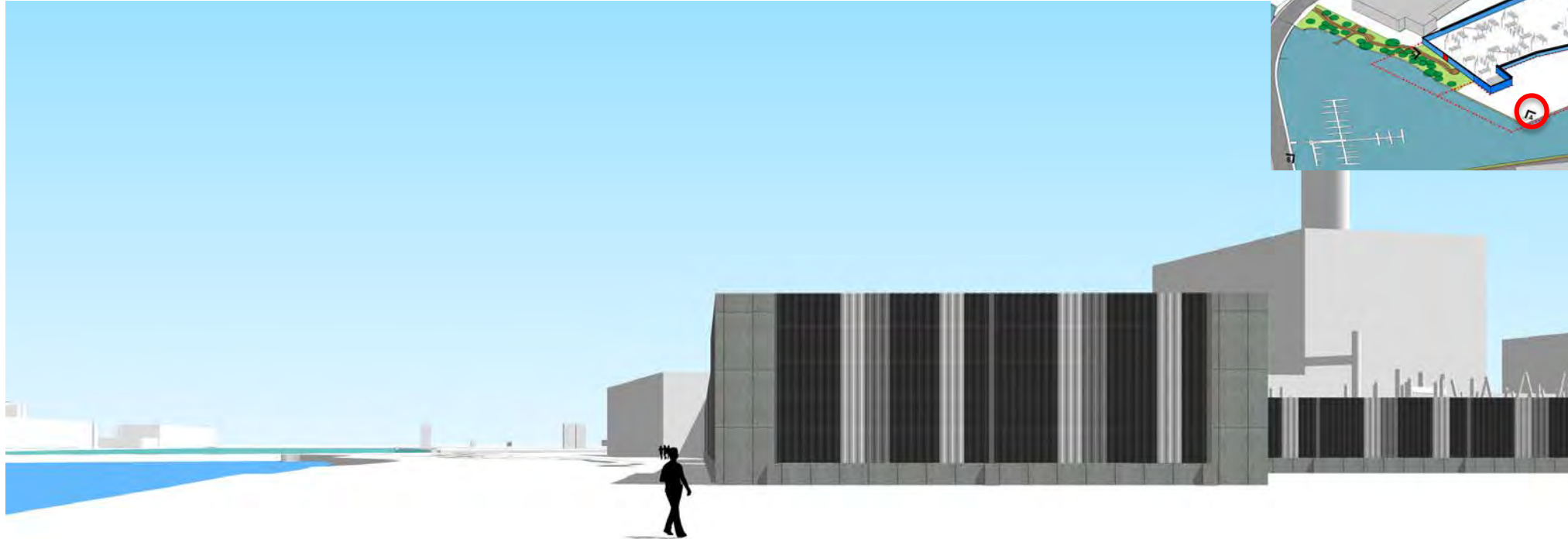


# Harborwalk Zone – View 3

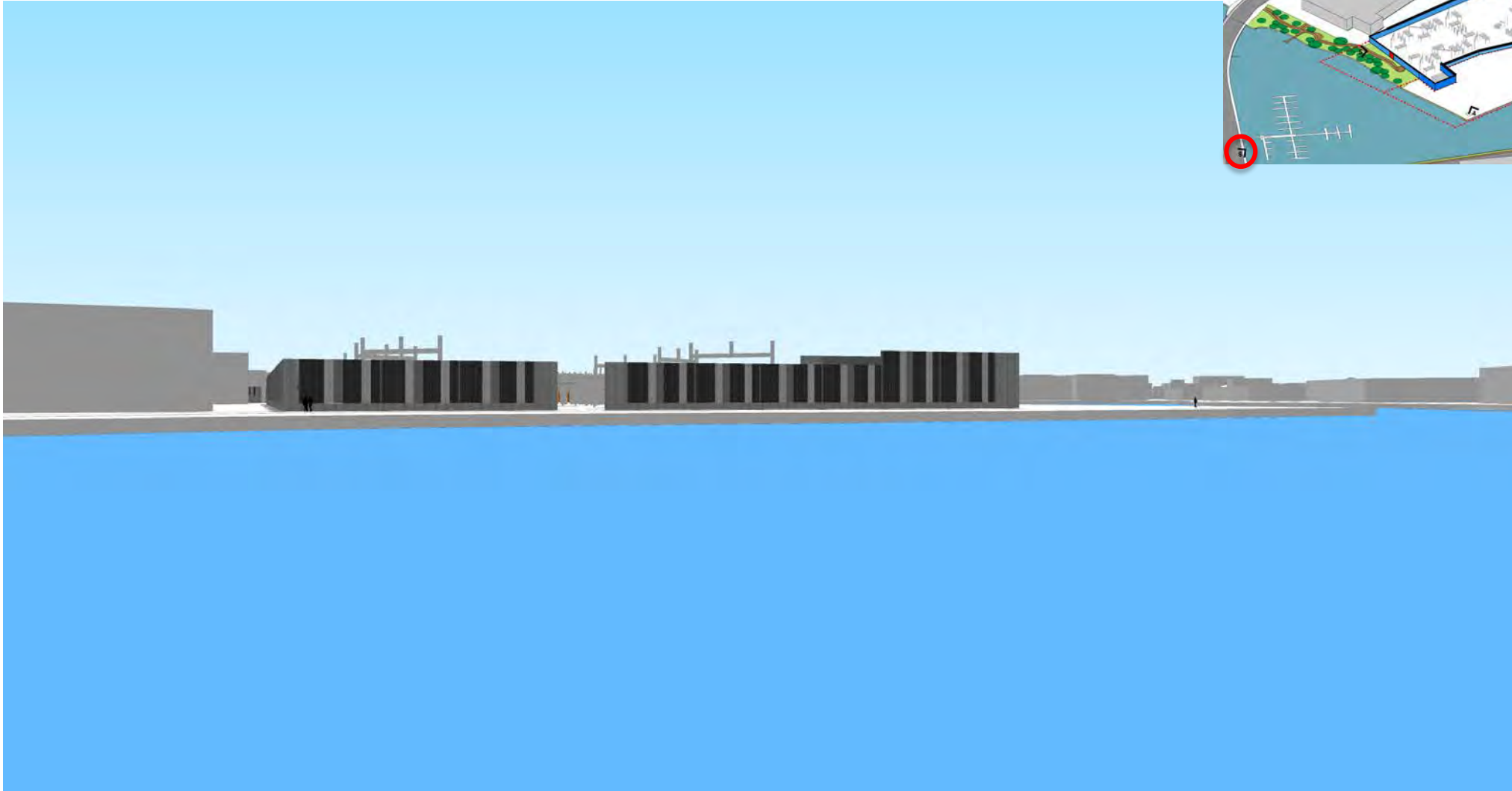
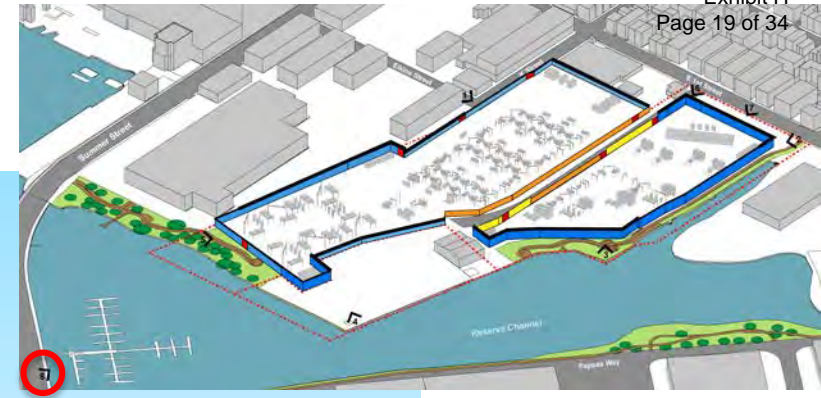




# Harborwalk Zone – View 4

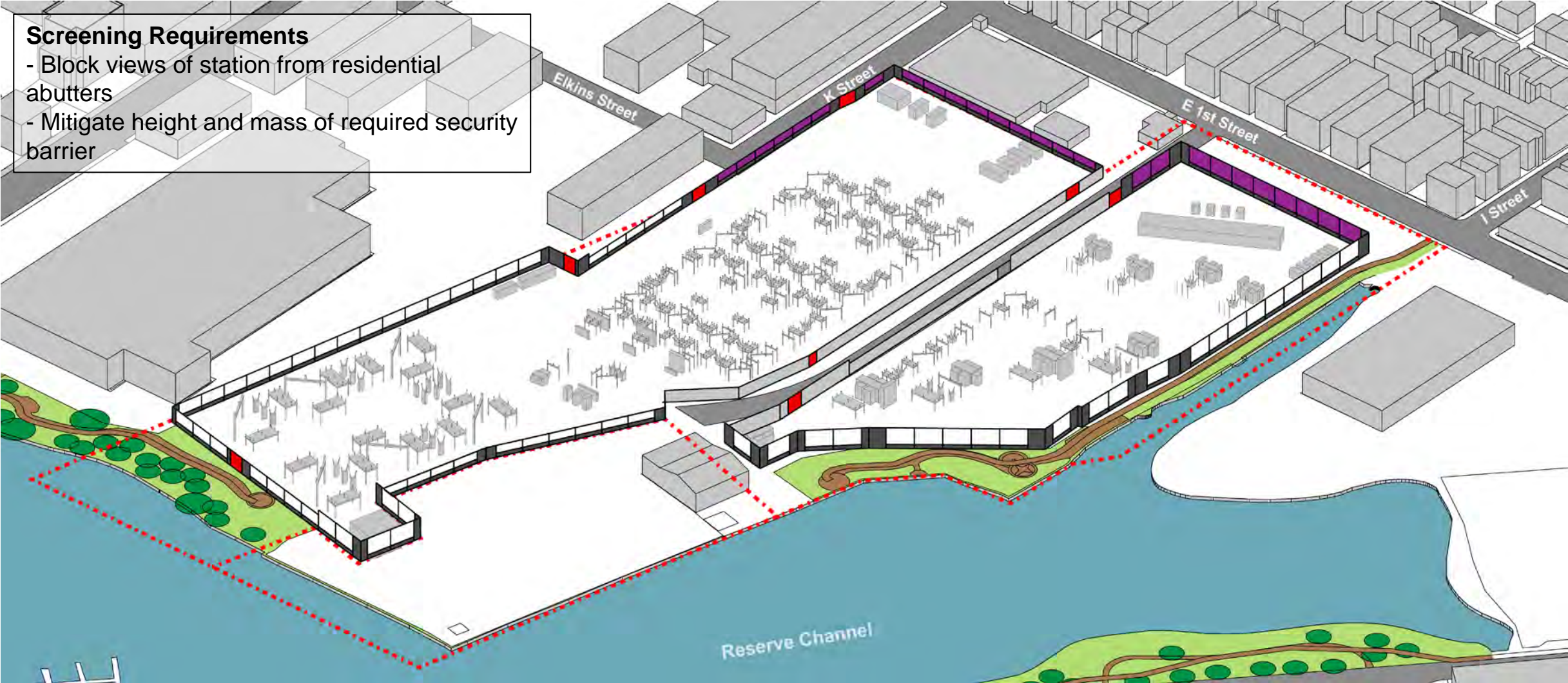


# Harborwalk Zone – View 8





# Neighborhood Zone – Corrugated Panels



# Wall Type 2 – Corrugated Panels - Neighborhood



**Solid corrugated metal panels  
block views but provide  
variety of light and shadow  
effects**

**Color & Finish variation  
creates visual interest**

**Concrete wall can step  
up at critical protection  
points**

**Cast in place base & flood  
barrier**



# Wall Type 2 – Corrugated Panels

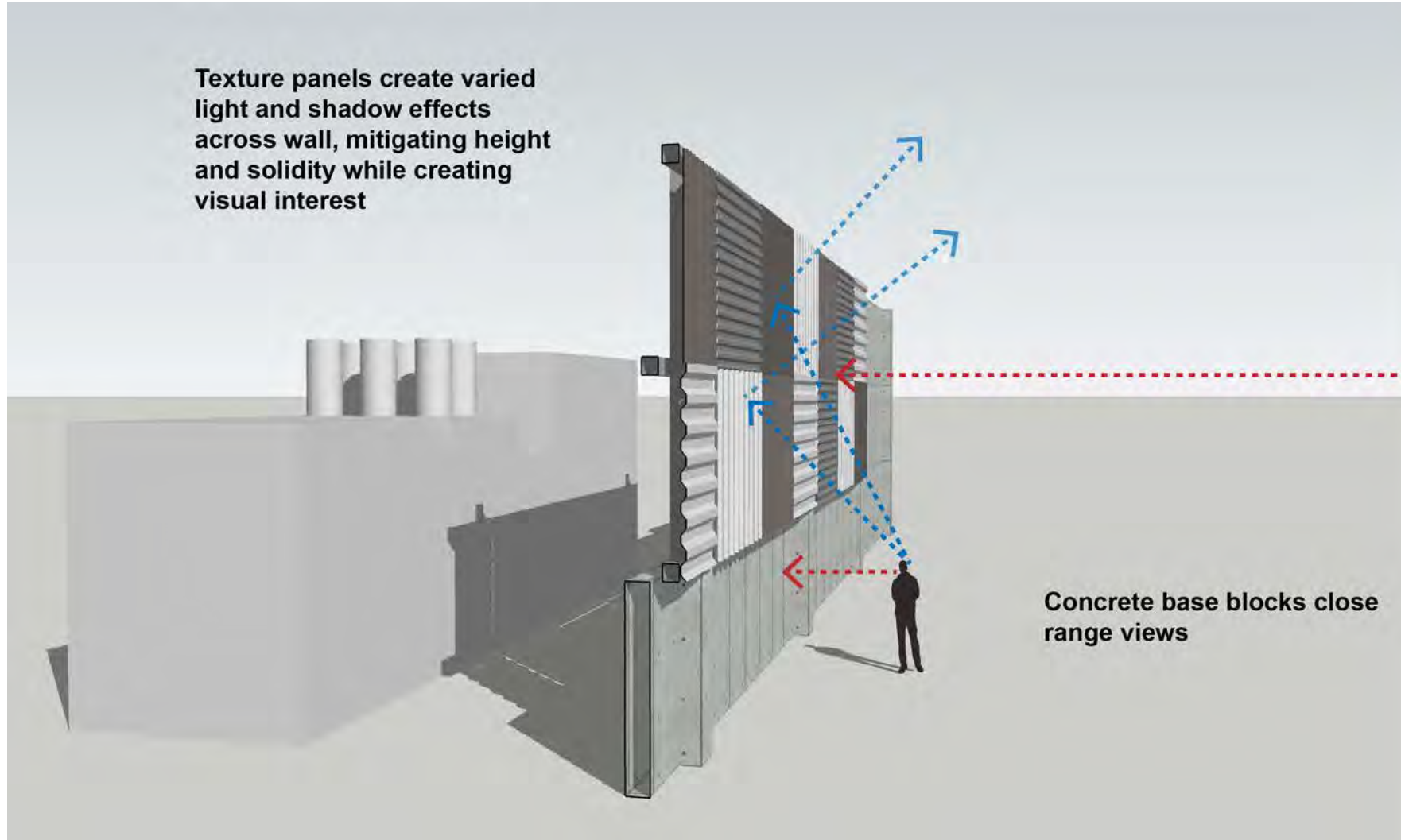


**Solid corrugated metal panels block views but provide variety of light and shadow effects**

**Color & Finish variation creates visual interest**

**Cast in place base & flood barrier, increased height prevents climbing hazard**

# Wall Type 2 – Corrugated Panels

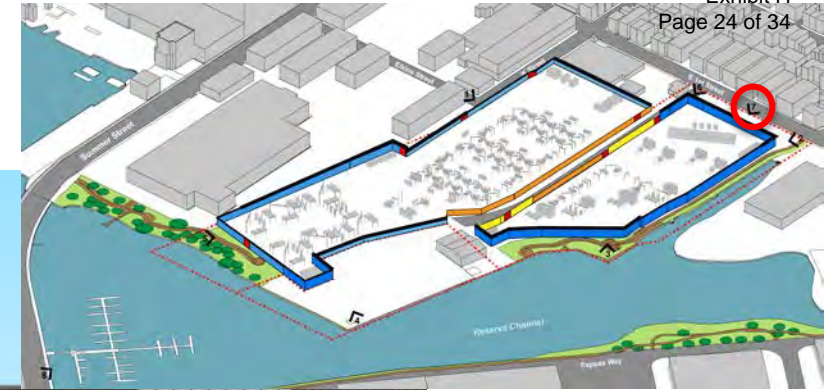


Panels block distant and medium range views of equipment

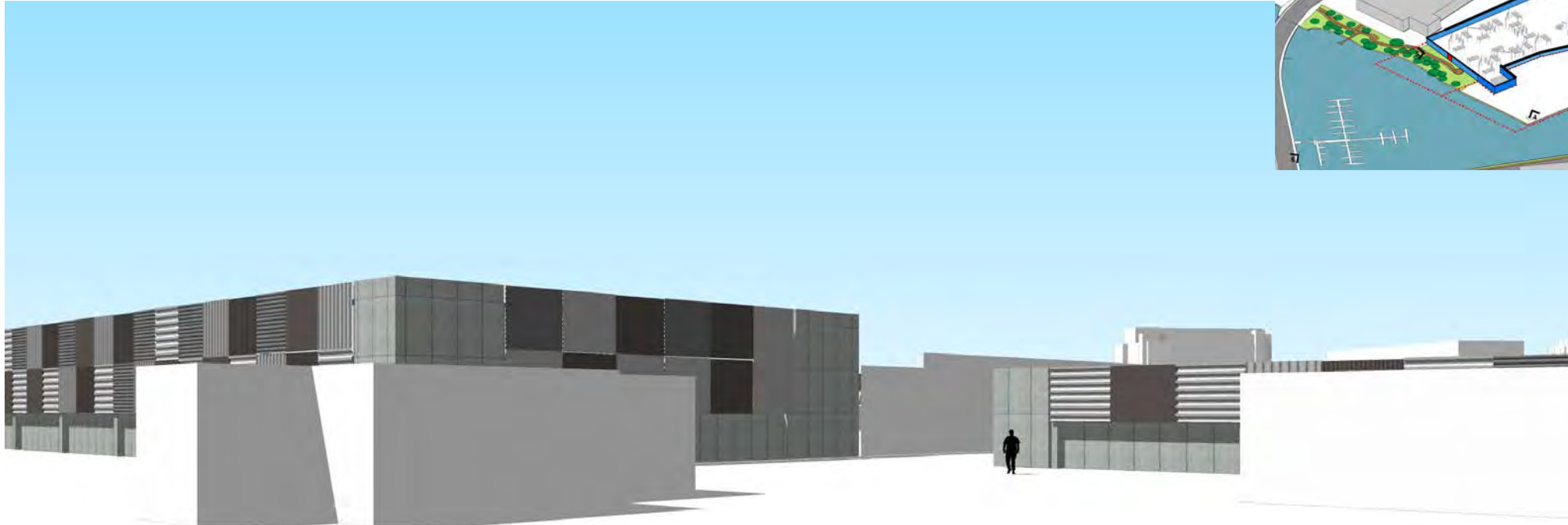
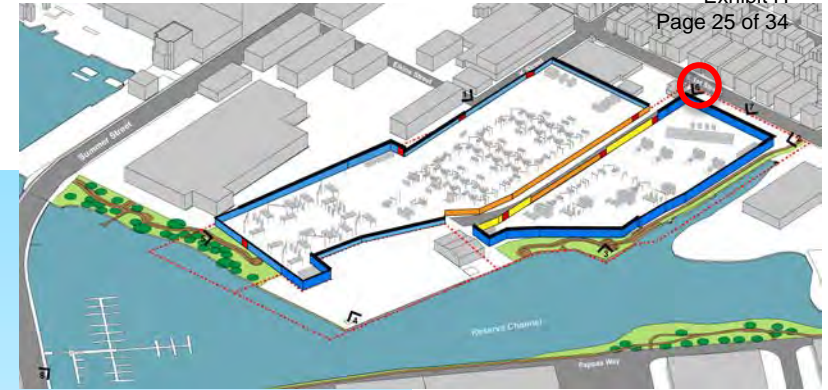
Concrete base blocks close range views



# Neighborhood Zone – View 7

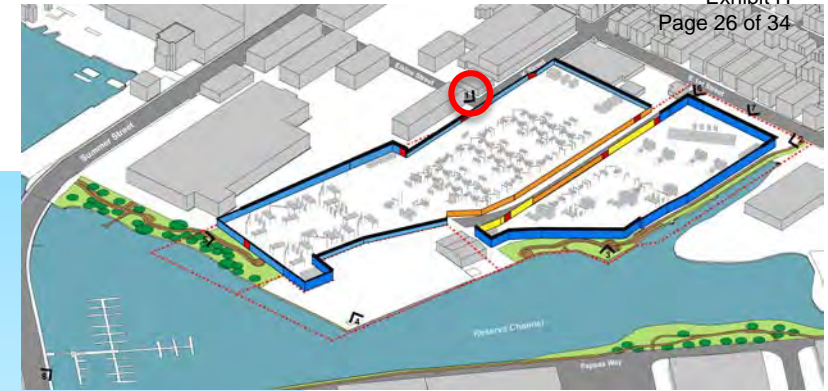
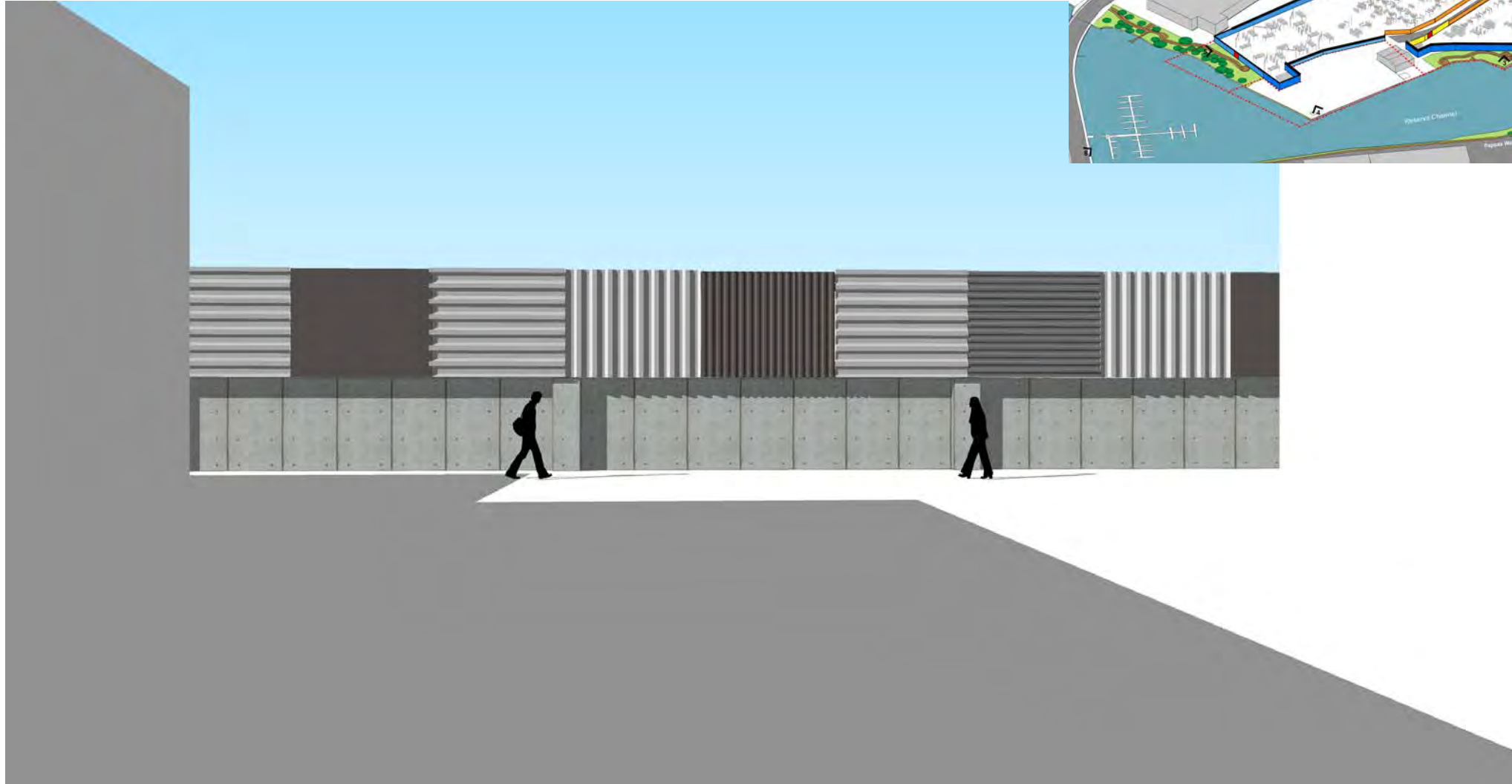


# Neighborhood Zone – View 6

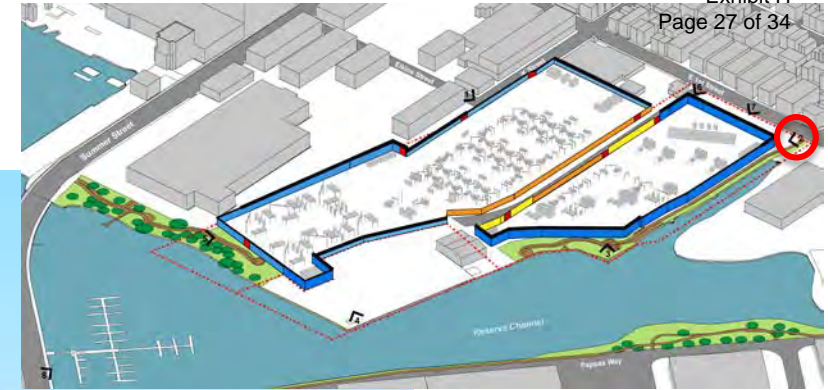
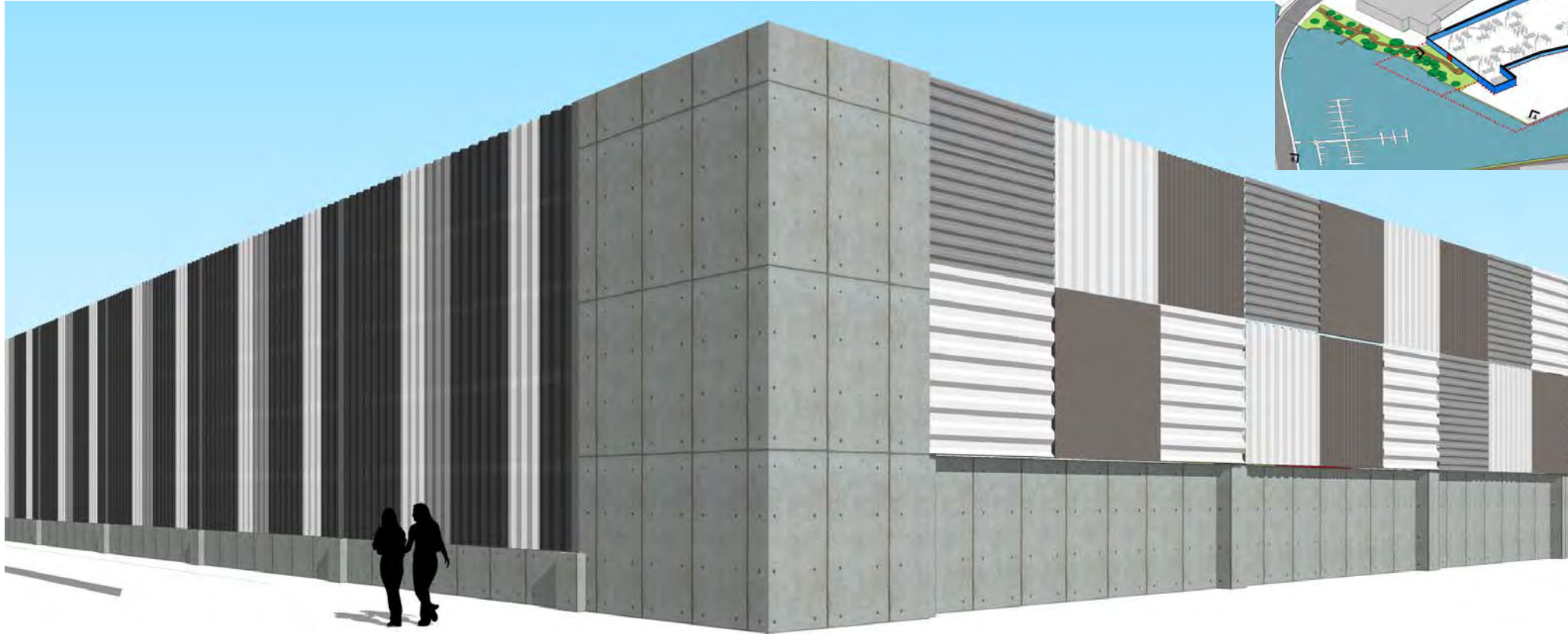




# Neighborhood Zone – View 1

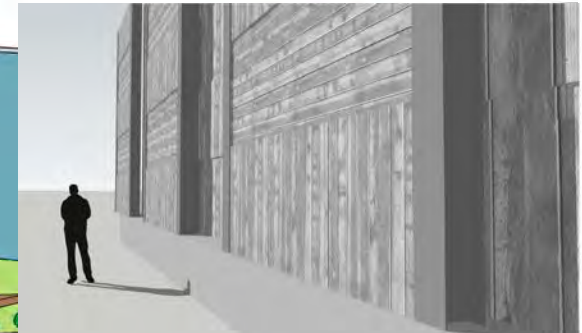
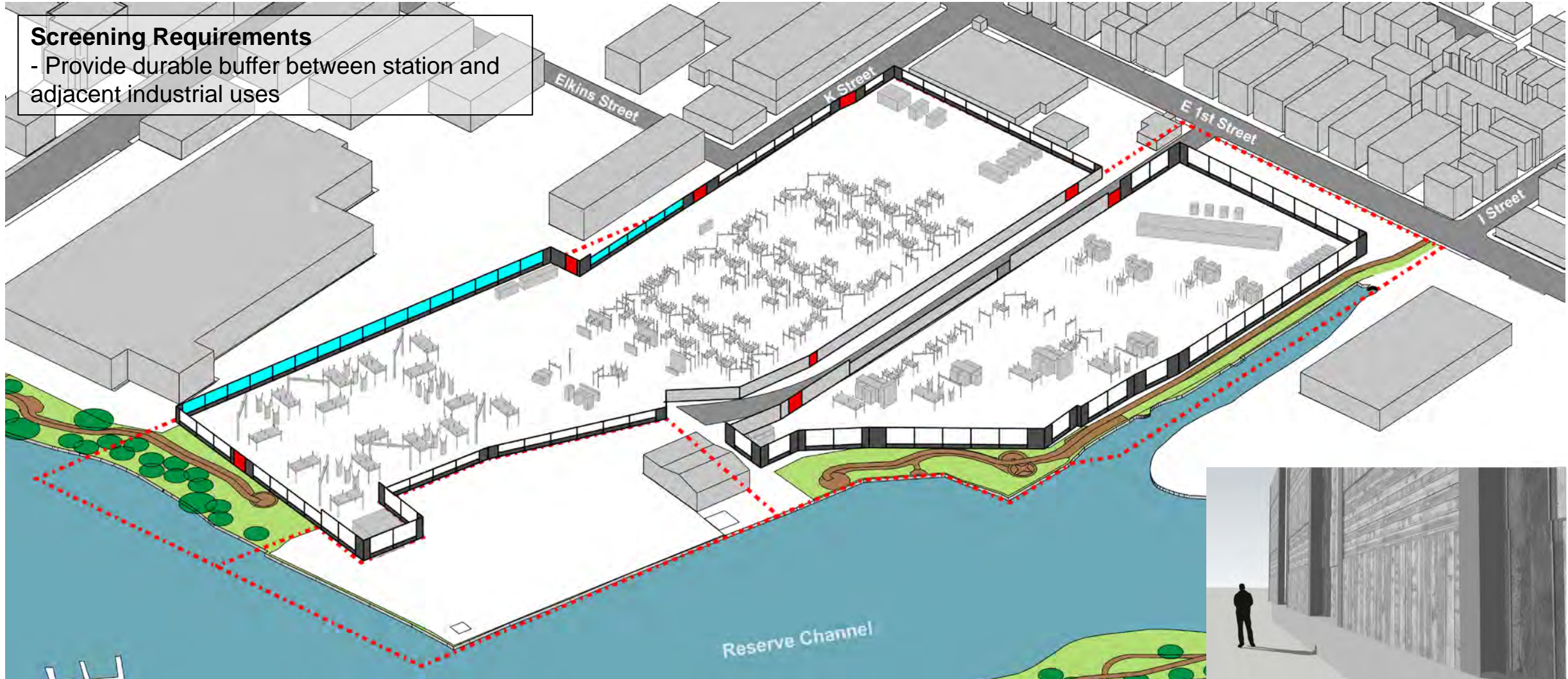


# Neighborhood Zone – View 2

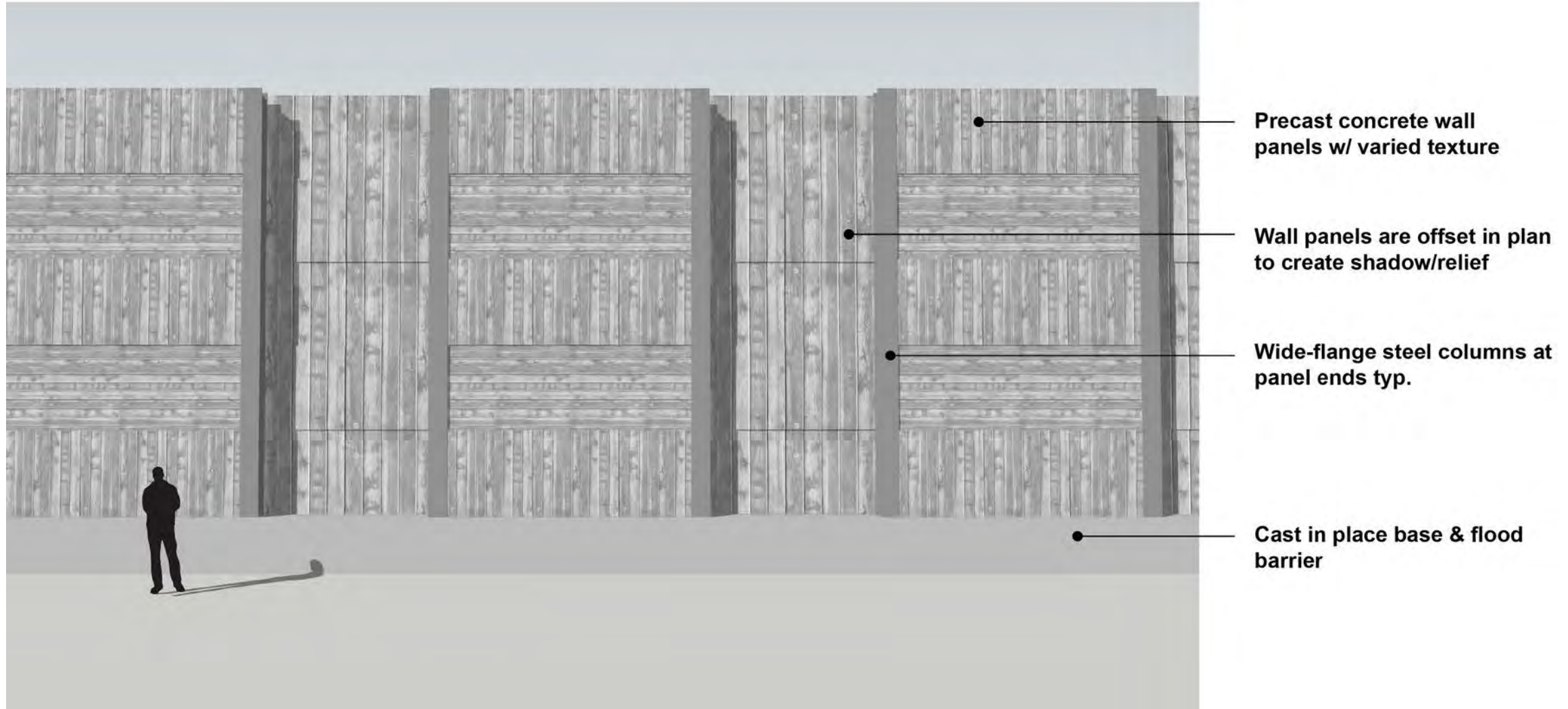




# Industrial Abutter Zone – Staggered Concrete Panel

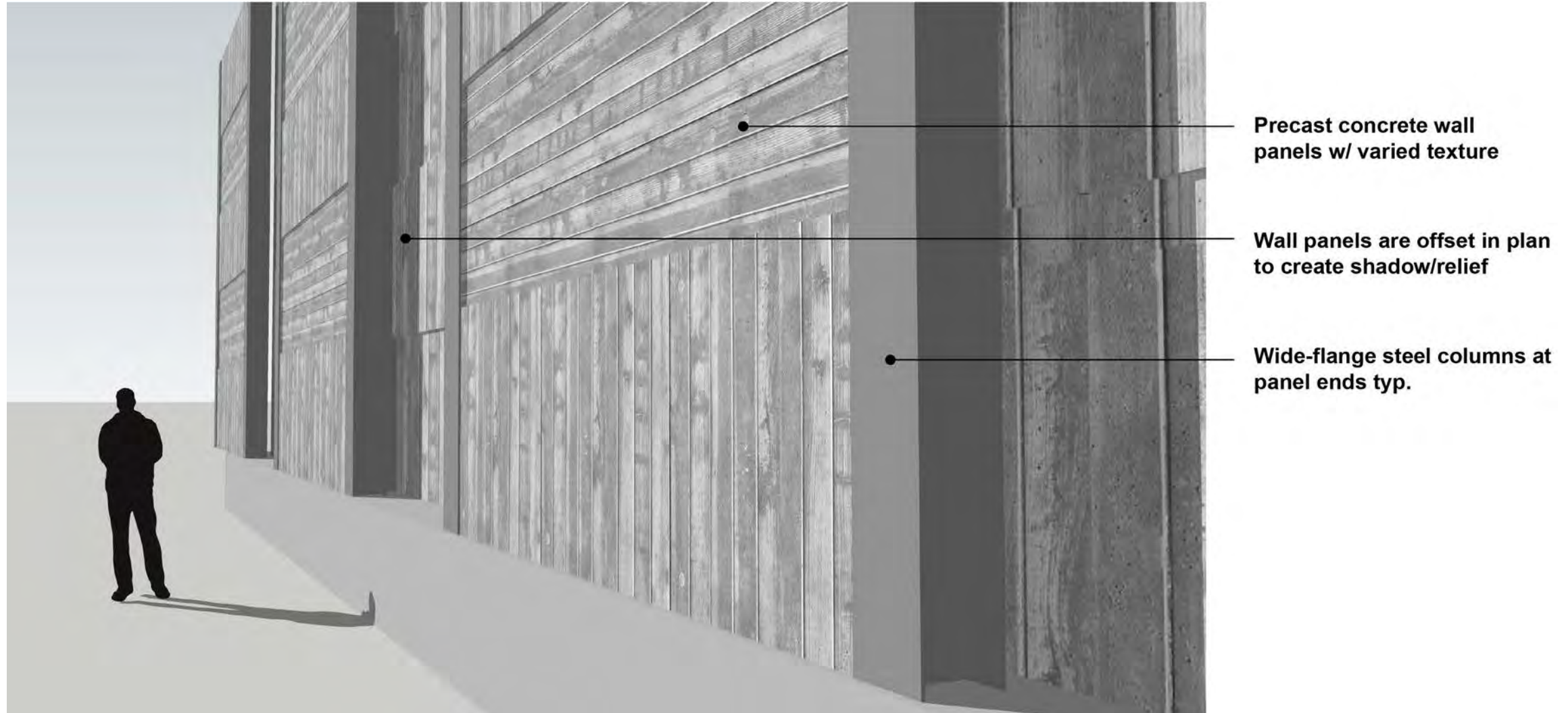


# Wall Type 3 – Staggered Concrete Panel – Industrial

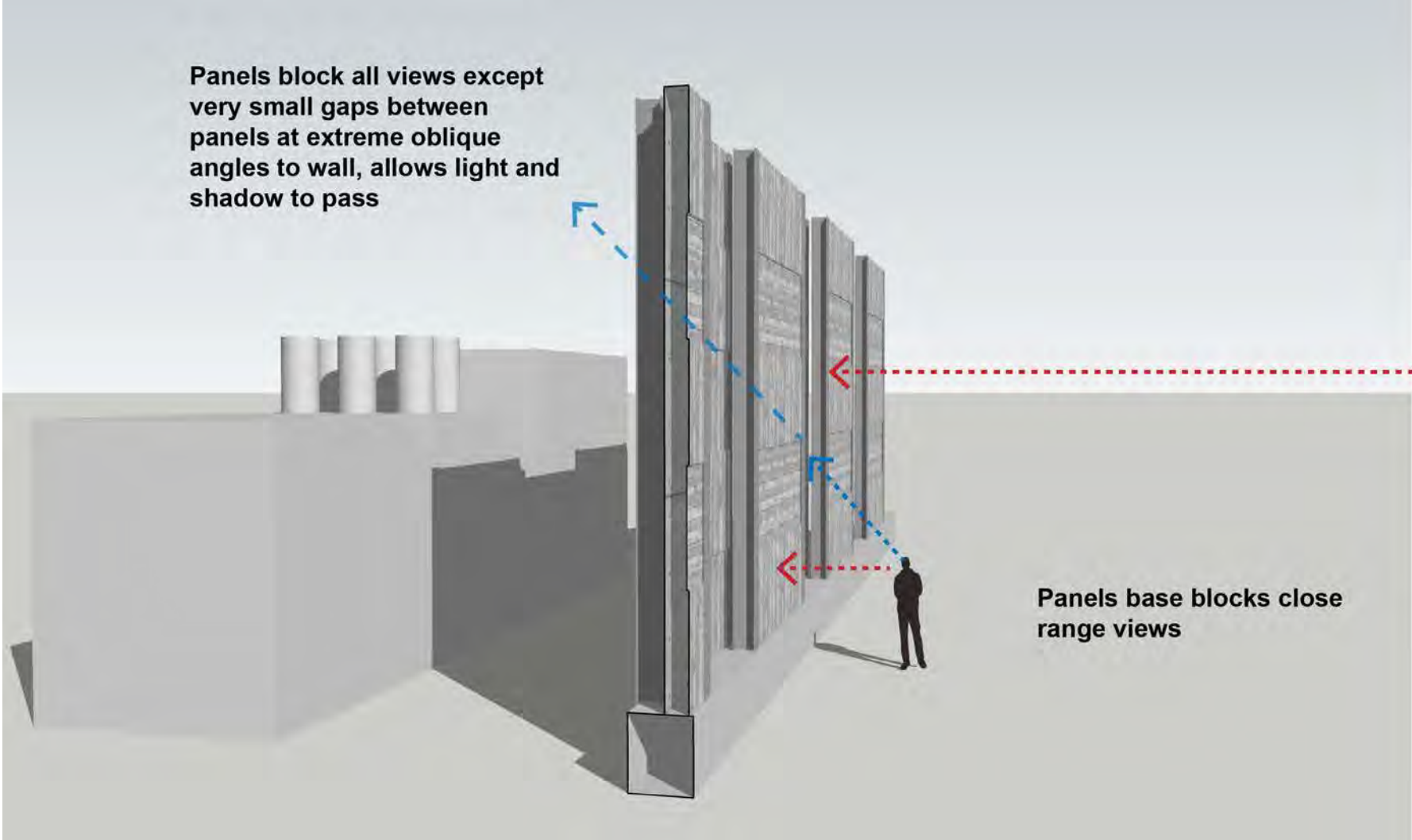




# Wall Type 3 – Staggered Concrete Panel



# Wall Type 3 – Staggered Concrete Panel



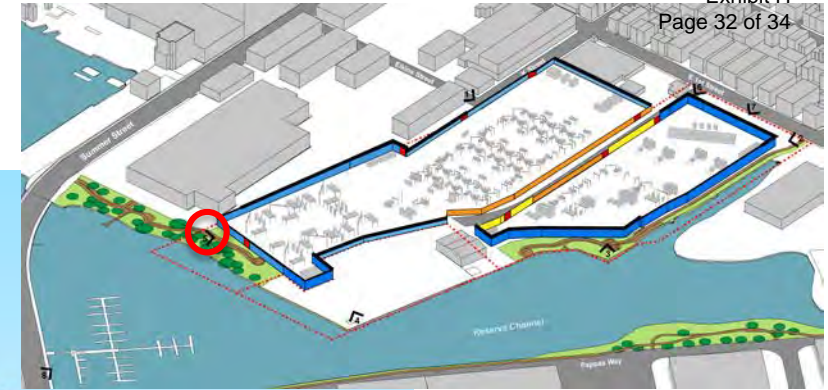
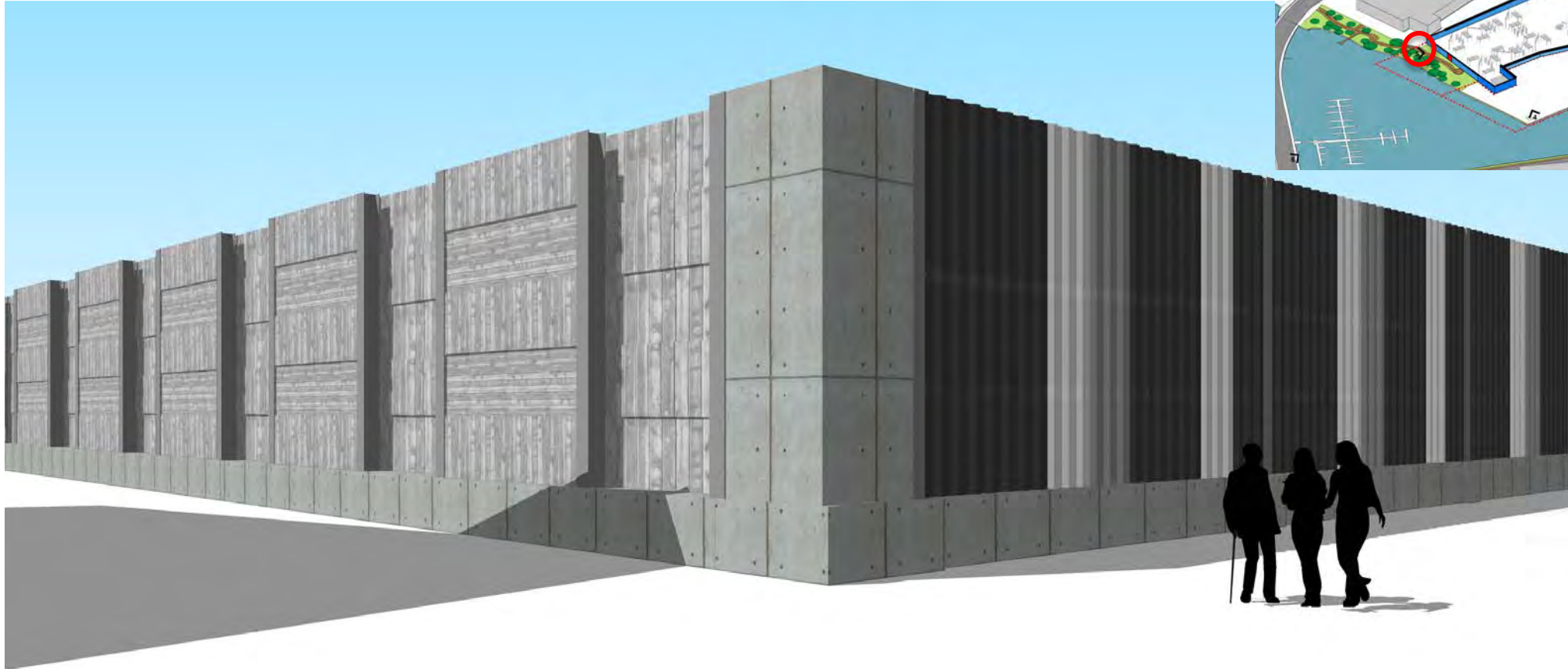
Panels block all views except very small gaps between panels at extreme oblique angles to wall, allows light and shadow to pass

Panels block distant and medium range views of equipment

Panels base blocks close range views

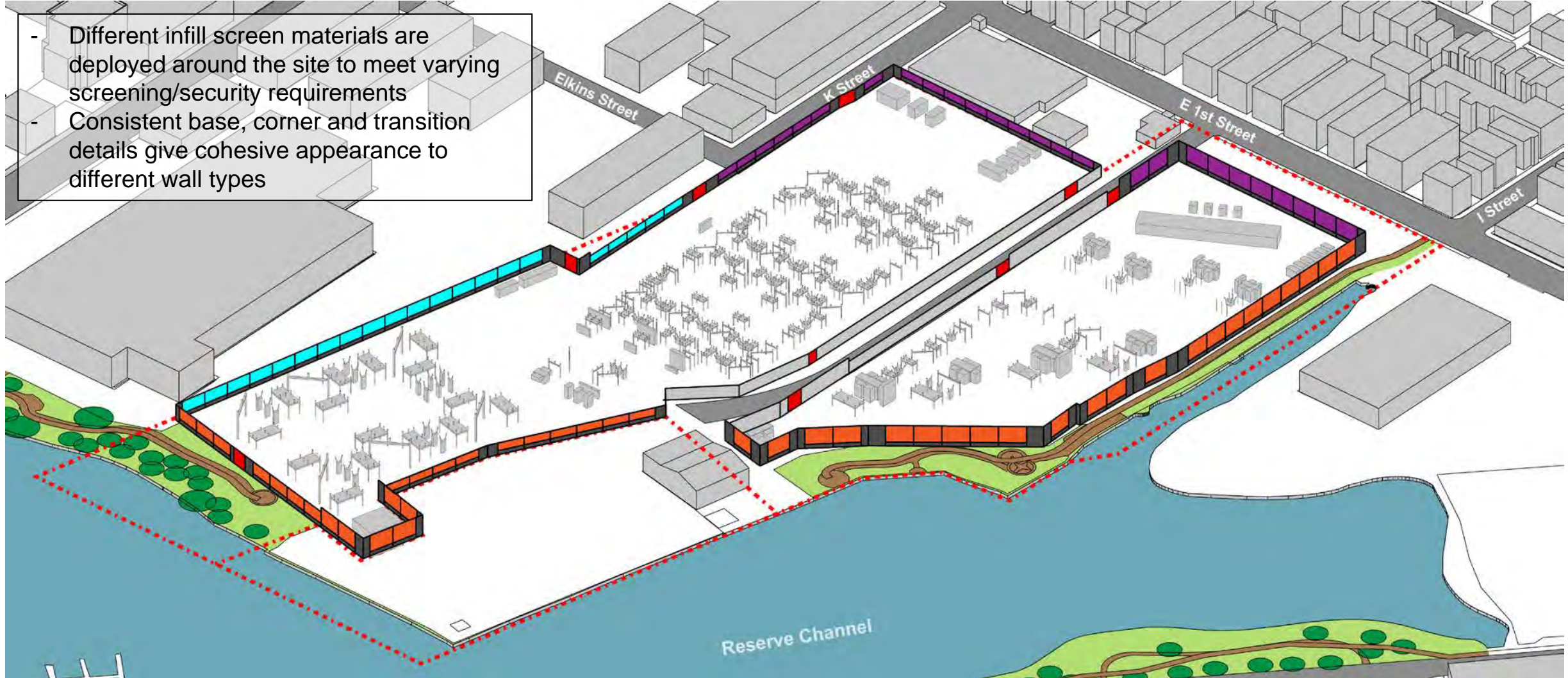


# Industrial Abutter Zone – View 5



# Modular screen wall system adapts to site conditions

- Different infill screen materials are deployed around the site to meet varying screening/security requirements
- Consistent base, corner and transition details give cohesive appearance to different wall types





# Thank You!