

Project Need

Delivering safe, reliable natural gas to the communities Eversource serves is a top priority. We are committed to being good neighbors and performing our work with utmost respect for you and your property. This project includes making changes to the underground network of natural gas pipelines that deliver energy through Massachusetts.

What You Can Expect

The Worcester Feed Line Improvement Project involves installing approximately five miles of 16-inch pipe in Southborough and Westborough, Massachusetts. This upgrade is an important step to ensuring a consistent, reliable flow of natural gas in the area as demand for natural gas continues to grow. The existing 12-inch pipe installed in the early 1970s is undersized for current gas demand.

Construction is expected to begin in 2021 and be completed in 2022. Construction activities will take place between March through November of each year. We will suspend project work between December and February, when the ground is typically snow-covered and/or frozen, which makes construction work slow and difficult.

Eversource always complies with Massachusetts siting requirements. Pre-environmental and utility survey work has been completed and the project is currently in the early permitting stages.

Please know that all Eversource employees and contractors carry identification, which you can ask to see at any time.

Frequently Asked Questions

Keeping our customers and communities informed about Eversource activity in the area is an important part of our work in the communities we serve. Communication with neighbors, public officials and other stakeholders will occur before construction begins and throughout the project. If you have any questions, please contact us anytime.

Why are you increasing the pipe size?

The existing 12-inch pipe was installed in the early 1970s and is undersized for the current gas demands.

How will the roadways be restored?

Eversource will restore roadways to existing or like-new condition during final road restoration.

Will access to my property be blocked?

Eversource will maintain safe access to residences and businesses as well as ensure priority passage of emergency vehicle traffic through active construction areas.

Will my gas service be affected?

Gas service to individual properties will not experience any service interruptions.

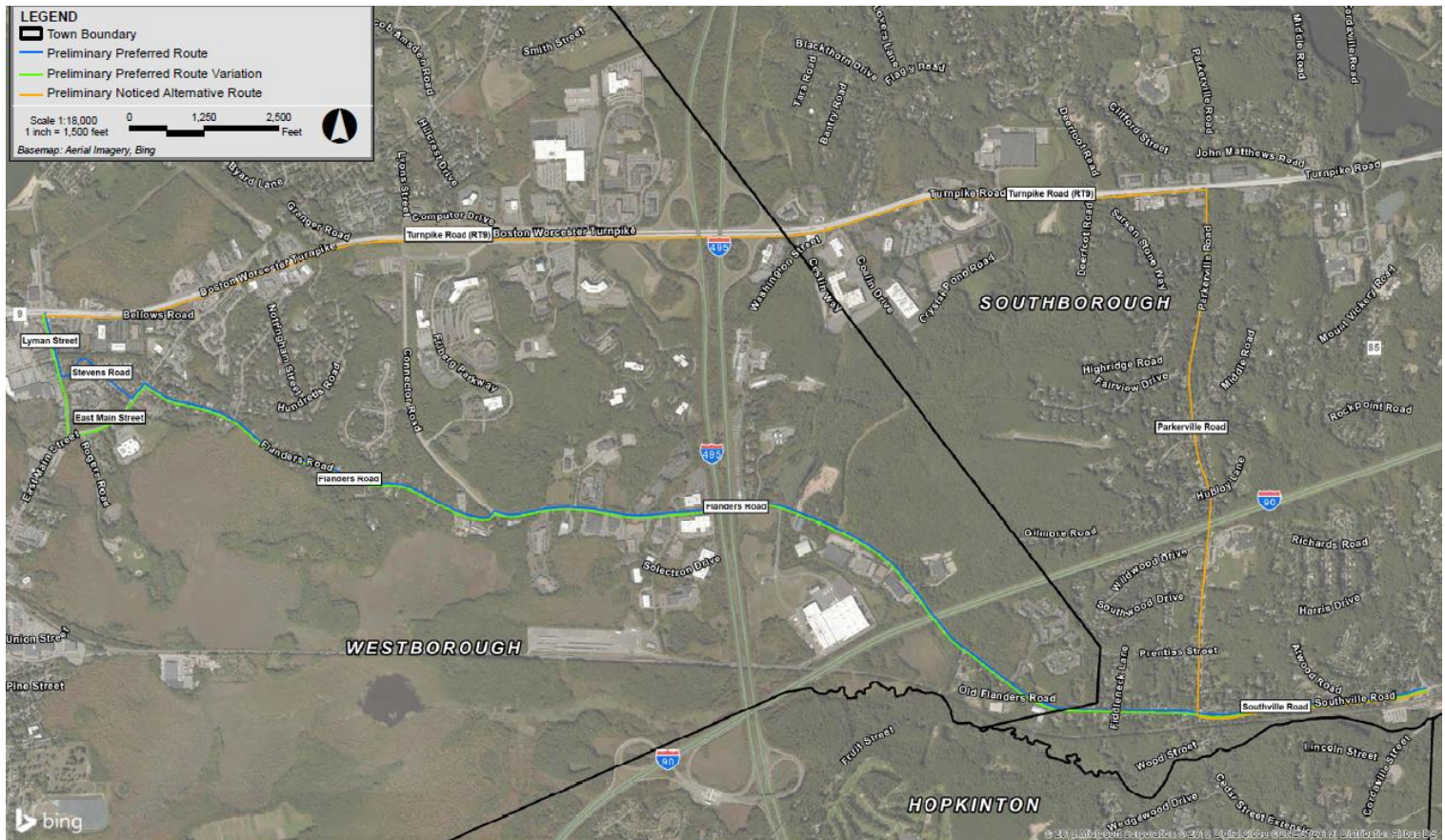
Will any service lines be connected to this new pipe?

Unfortunately, there will not be any opportunity for new customers to connect to this new pipe.



Proposed Route

Locations shown on map are for illustration only and show general areas where construction activities will occur. Actual locations may vary in the field.



We're Committed to Keeping You Informed

Working together and keeping you informed are important to the successful completion of this project. As construction professionals, we also know that living within a work zone can be challenging and we will do our best to minimize any disruption.

We're committed to keeping you connected through a variety of methods including letters, community meetings, door-to-door notifications, phone calls and other methods you might prefer.

Expect to hear more soon, but in the meantime, should you have any initial questions or concerns please contact Sean Lauziere, Community Relations Specialist at 508-305-6898 or sean.lauziere@eversource.com.