

Issued 14-Feb-01	MATERIAL STANDARD ELECTRIC OPERATIONS ORGANIZATION	M3801
Revised 02-Oct-09		Revision 2 Page 1 of 3

M3801R2

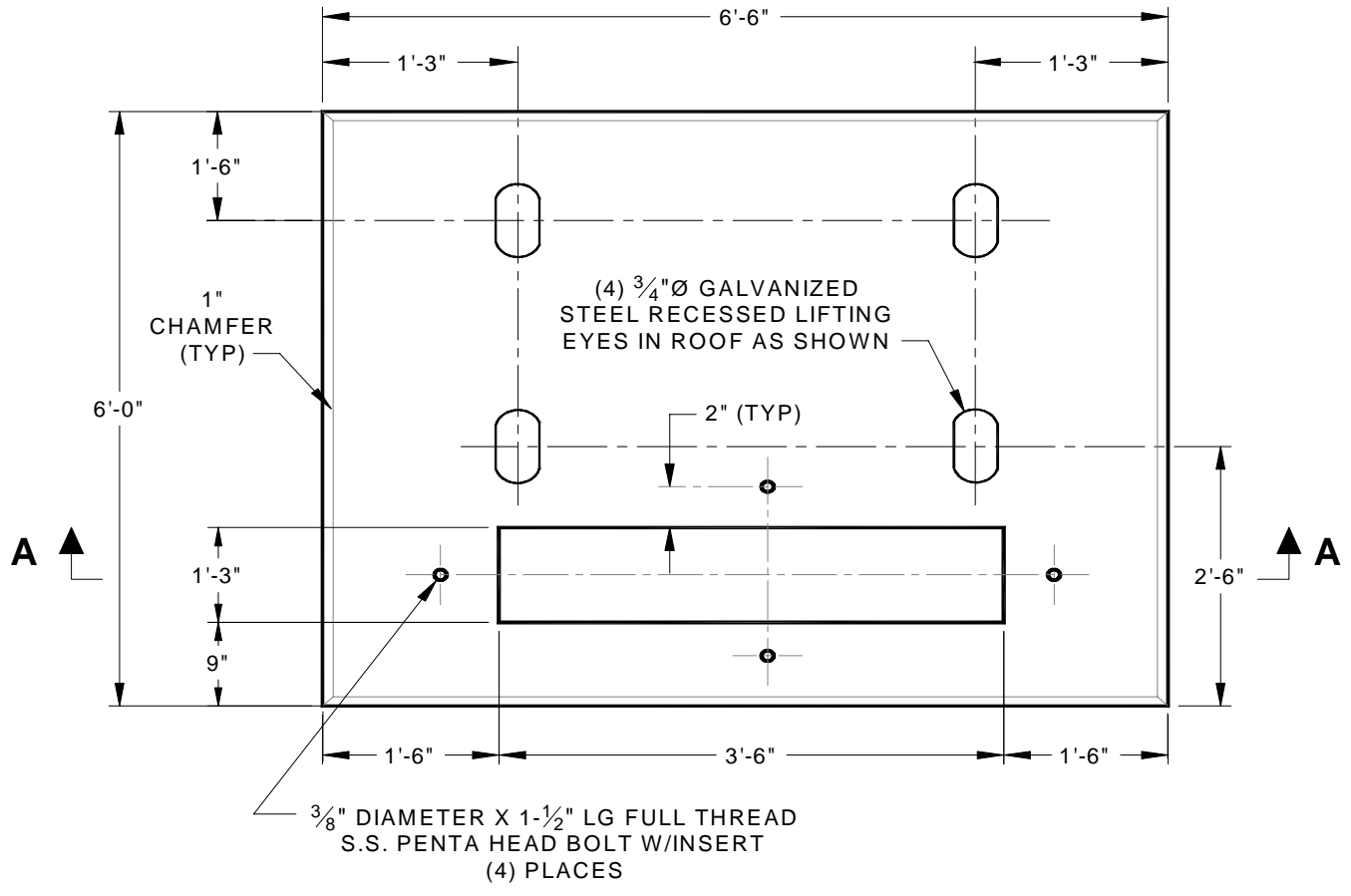
****Standard M3801 Supercedes ComElectric UDS & CUDS, Drgs. NE-12, NE-13 and NE-13A****

Precast Concrete Transformer Foundations
Up to 2500 kVA

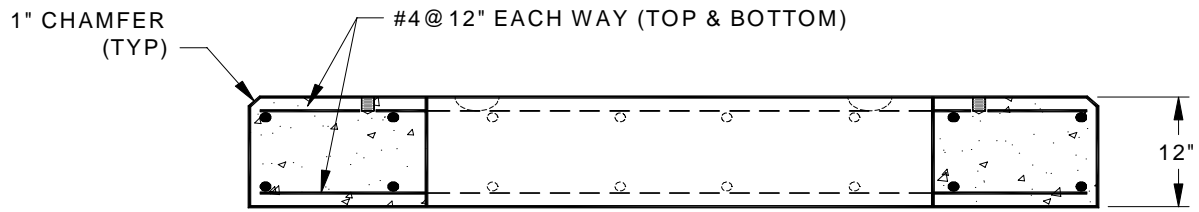
- 1.0 Scope** – This specification details the dimensions, strength, reinforcement, and appurtenances required for fabrication of precast transformer foundations.
- 2.0 General** – Vendor design and fabrication drawing shall conform to the minimum requirements of this specification and shall be signed and stamped by a Massachusetts registered professional engineer.
- 3.0 Design Notes**
 - 3.1 Concrete minimum strength, 5000 psi @ 28 days.
 - 3.2 Steel reinforcement - ASTM A615, Grade 60.
 - 3.3 Minimum steel cover, 1-1/2 inches.
 - 3.4 Design Loading – AASHTO HS20-44.
 - 3.5 Design Specifications – ACI 318 & AASHTO Load Factor Design Method.
 - 3.6 Reinforced to support H-20 wheel load.
 - 3.7 Manufacturers name to be stenciled on vertical wall of cutout opening.

4.0 Bill of Materials

Material Description	Figure No.	Catalog ID
Precast Top Pad Foundations		
Plan Top #1 (Transformers up to 300kVA)	1	14706
Plan Top #2 (Transformers 500 to 2500kVA)	2	14715

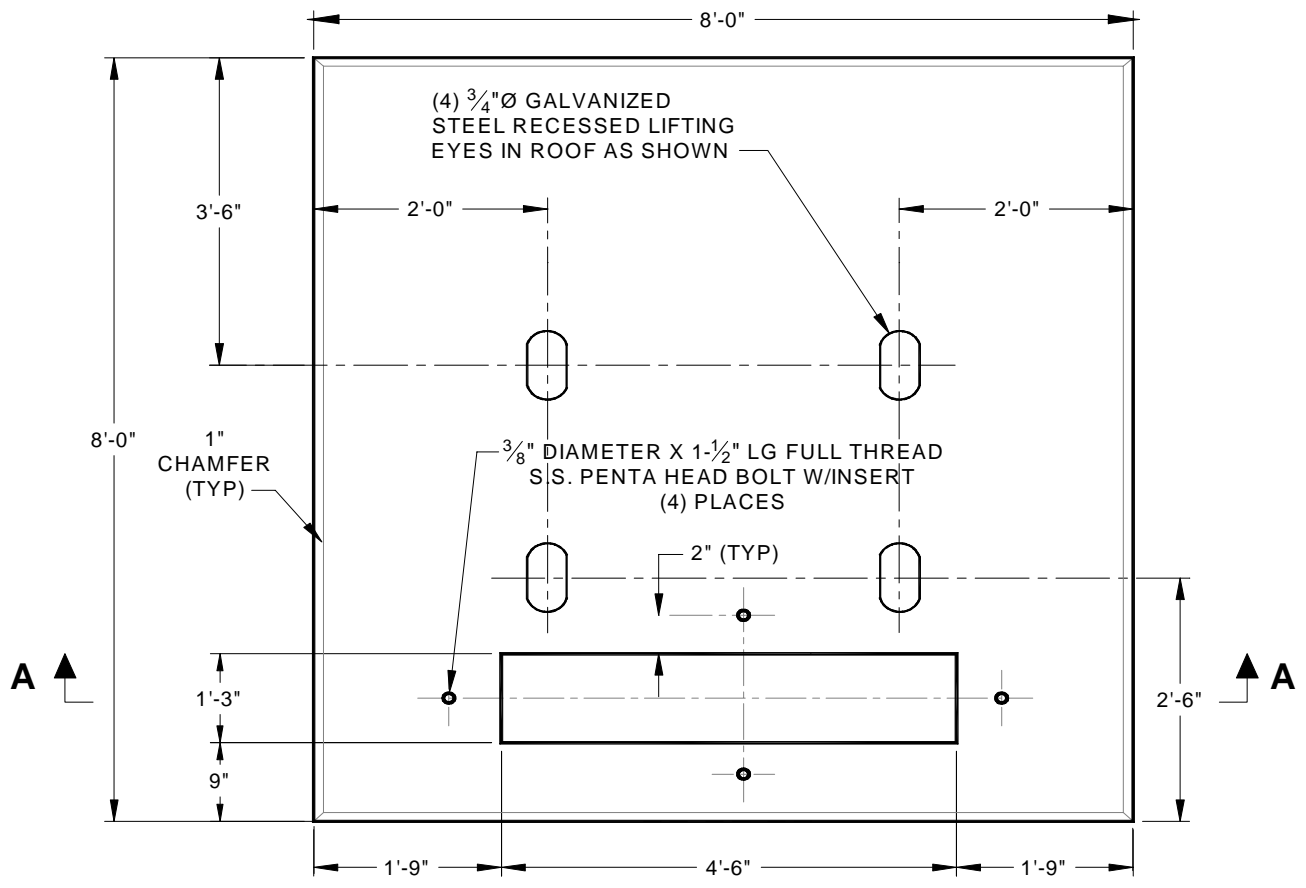


PLAN TOP NO. 1
(FOR TRANSFORMERS UP TO 300KVA)

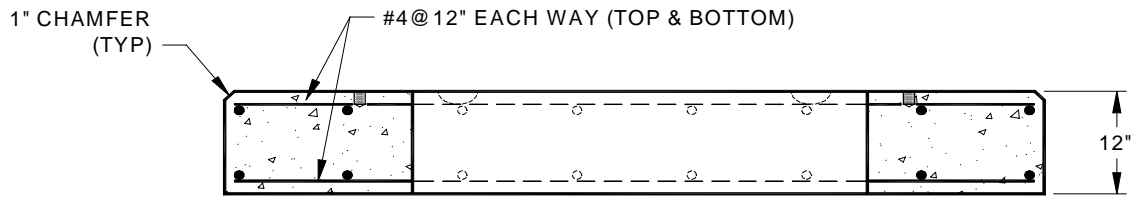


SECTION A-A

Figure 1 - Transformers up to 300kVA



PLAN TOP NO. 2
(FOR TRANSFORMERS 500 TO 2500KVA)



SECTION A-A

Figure 2 - Transformers up to 2500kVA

Approved by: Amin Jessa
 Director, Distribution Engineering