

<p>Issued 13-Aug-07</p>	<p>MATERIAL STANDARD ELECTRIC OPERATIONS ORGANIZATION</p> 	<p>M1216 Revision 0 Page 1 of 4</p>
-----------------------------	---	---

M1216

****This standard supersedes COM Electric Construction Standard NE-15B****

PRECAST CONCRETE – PRIMARY PULL BOX FOUNDATION
5'-0" x 5'-0" x 5'-0" H INSIDE DIMENSIONS

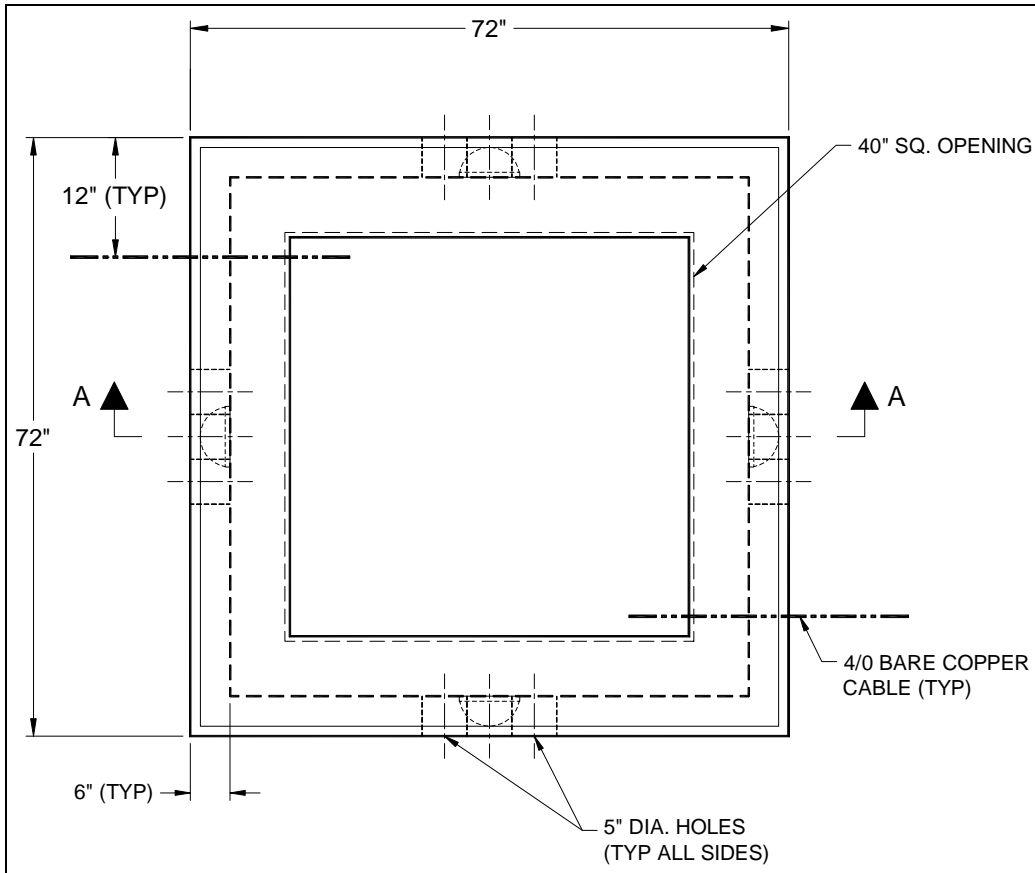
- 1.0 Scope** – This specification details the dimensions, strength, reinforcement, and appurtenances required for fabrication of precast concrete foundation.
- 2.0 General** – Vendor design and fabrication drawing shall conform to the minimum requirements of this specification and shall be signed and stamped by a Massachusetts registered professional engineer.
- 3.0 Design Notes**
- 3.1 Concrete minimum strength - 5000 psi @ 28 days.
 - 3.2 Steel reinforcement - ASTM A615, Grade 60.
 - 3.3 Minimum Steel Cover – 1 inch.
 - 3.4 Design Loading - AASHTO HS20-44.
 - 3.5 Design Specifications – ACI 318 & AASHTO Load Factor Design Method.
 - 3.6 Manufacturer's name and year of fabrication to be stenciled on vertical wall of access chimney.
 - 3.7 All Termaducts to have bell ends flush with the inside wall.
 - 3.8 Construction Joint – Sealed with 1" diameter Butyl Rubber or approved equal.
- 4.0 Bill of Materials**
- 4.1 The catalog ID for the precast manhole is "9437".
 - 4.2 The catalog ID for the bonding frame is "1229". Bonding frame consists of 1- #4/0 stainless steel ground clamp, 1 - #10 x 1-1/2" lg x 5/16" dia SS screw and 1- lead plug as supplied by Tools Unlimited Inc., Stoughton, MA (or approved equal).
 - 4.3 The recessed pulling eye, "New PI-2", shall be manufactured by Pennsylvania Insert Corp., Spring City, PA (or approved equal).
-

Issued
13-Aug-07

MATERIAL STANDARD
ELECTRIC OPERATIONS ORGANIZATION

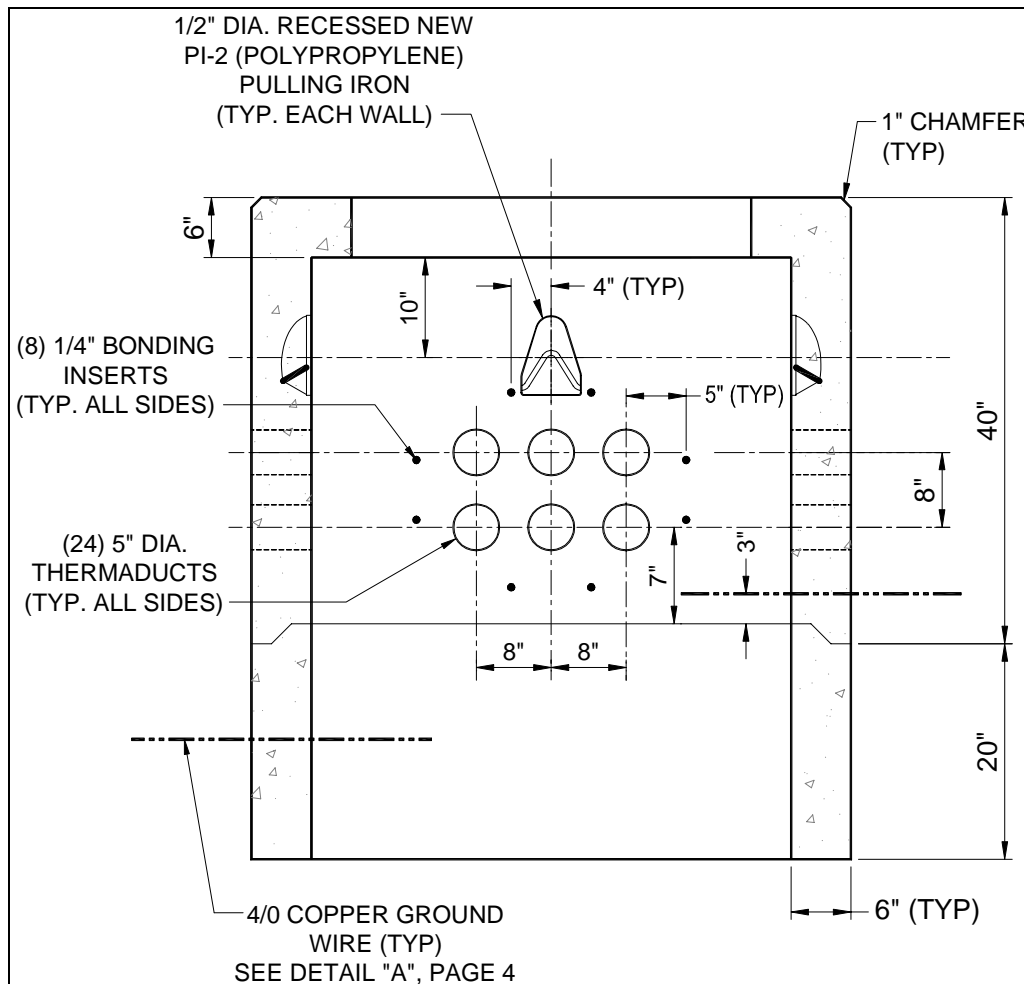


M1216
Revision 0
Page 2 of 4



PLAN

NOTE: DRAWING IS NOT TO SCALE



SECTION A-A

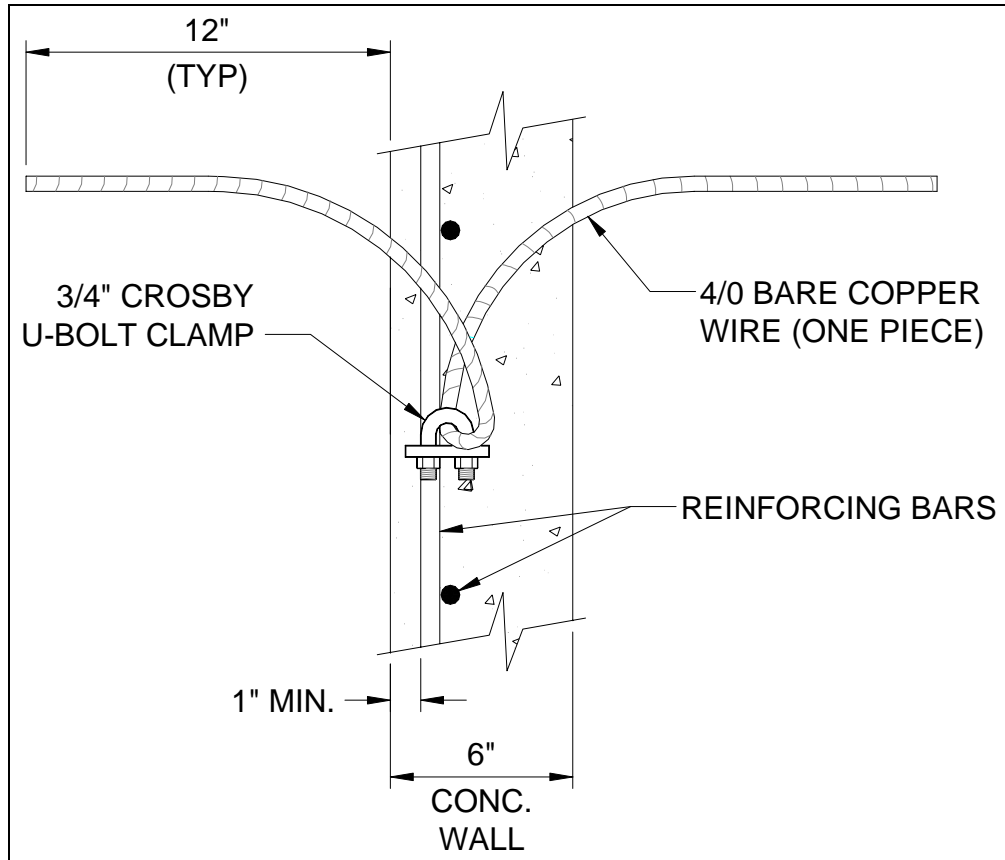
NOTE: DRAWING IS NOT TO SCALE

Issued
13-Aug-07

MATERIAL STANDARD
ELECTRIC OPERATIONS ORGANIZATION



M1216
Revision 0
Page 4 of 4



DETAIL "A"

NOTE: DRAWING IS NOT TO SCALE

Approved by: Elizabeth J. Leonard
Manager, Distribution
Technical Engineering