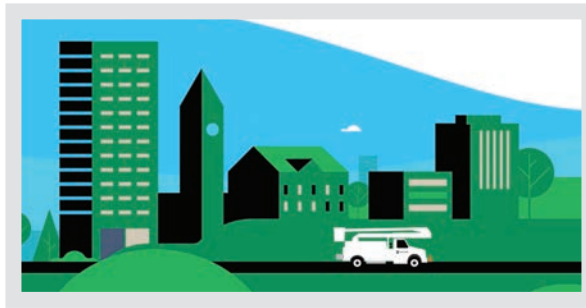


## When Severe Weather Hits, We're on It

Have you ever wondered what goes into a power restoration? A new animated video outlines the process. Check it out by visiting [Eversource.com/restoration-process](https://www.eversource.com/restoration-process). The video explains the many aspects of restoration — such as the role of damage assessors and what goes into providing estimated times of restoration after major storms.

The video also outlines the steps taken during a large power restoration effort, including:



- ✓ **Assessing damage**
- ✓ **Prioritizing outages impacting the most customers**
- ✓ **Monitoring critical facilities like hospitals and fire stations**
- ✓ **Sharing restoration times**
- ✓ **Repairing damage, such as a broken pole or damaged transformer**

At Eversource, when responding to storms, we work day and night until your power is back on. Learn more at [Eversource.com/restoration-process](https://www.eversource.com/restoration-process).

## Energy Efficiency Tips for Your Business

Whether you are in the commercial, education, food service, manufacturing, residential, retail or small business industry, we have ways for you to reduce your energy expenses.



- **Lighting:** Establishing standard lighting protocols and procedures for shutting off lights during closed hours and installing dimmers and motion detectors can have a big impact on how much energy you use.
- **Insulation:** Multi-pane windows, some with inert gases between the panes, can provide more than double the insulating capabilities of your existing windows.
- **Get a facility assessment:** We can connect you with qualified energy specialists who will perform a comprehensive no-cost evaluation of your building's energy system and provide you with a plan outlining all eligible measures, costs, and estimated savings.

Want to learn more? Visit [Eversource.com](https://www.eversource.com) and select Business.

Cape Cod businesses should visit [CapelightCompact.org](https://www.CapelightCompact.org).

## Celebrating our Environment

From our industry-leading goal of being carbon neutral by 2030 to our leadership advancing clean energy — we're committed to environmental stewardship.

On World Environment Day, Earth Day, Arbor Day and all year round, our employees enjoy taking time to care for Mother Earth. This spring season, the Eversource team cleaned up neighborhoods, local parks and riverways during our week-long Earth Day volunteer event, and recognized Arbor Day by planting trees and donating 2,000 saplings.



*Eversource arborists celebrated Arbor Day by planting trees with students at Country Elementary School in Weston.*

## Solutions to Cut Costs and Save Energy

Whether you run a small restaurant, a large industrial complex, an educational facility or any type of business in-between, we have solutions on our website to help you save money and energy.



We have facility assessments, online tools, equipment rebates and discounts, new construction resources and much more, all available at the click of a button.

Visit **Eversource.com** and click on Business in the top left to see the tools we offer to save you money and energy.

Cape Cod businesses should visit **CapeLightCompact.org**.

## Stay Safe Around Eversource Work Zones

June is National Safety Month. As the weather gets warmer, there will be more Eversource crews conducting important work to our infrastructure.

For your safety and that of our workers, it's important to recognize Eversource work zones while driving so you can respond to warnings and traffic patterns and pass through safely. Eversource crews set up safety cones and signage ahead of projects that alert you to approach the work zone with caution.



Crews also communicate with municipal traffic control personnel to manage traffic flow and let them know about any changes to the work zone setup. Our workers wear high-visibility reflective apparel. Please be alert for them. If you happen to see our workers in your neighborhood, please wave rather than approach them. We continue to practice physical distancing during this pandemic to ensure everyone's safety.

For more safety tips visit the Safety section of **Eversource.com**.

## Say Goodbye to Electric Vehicle Range Anxiety

To provide drivers with effective and convenient charging options for long-distance electric vehicle (EV) travel, Eversource is joining the Electric Highway Coalition. The coalition will advance clean energy by enabling EV drivers' access to uninterrupted travel across major regions of the country. The coalition is creating an organized network of chargers along major highways.

At the same time, Eversource is deploying one of the largest EV charging programs in the nation. We're rapidly advancing to our goal of providing 3,500 charging ports across Massachusetts, and we're seeking regulatory and state approval for EV programs in Connecticut and New Hampshire.

Our program and this coalition will play vital roles in reducing carbon emissions across the region. To learn more about Eversource's commitment to sustainability go to **Eversource.com/sustainability**.



### Outage Alerts

Sign up to receive outage alerts via text, email or phone. With text alerts, you can quickly report an outage (text OUT to 23129) or request updates (text STAT to 23129). Enroll in your **Eversource.com** account.

Message frequency varies. Message and data rates may apply. To unsubscribe, reply or text 23129 with STOP. For help, reply or text 23129 with HELP.

Stay connected on:



**EVERSOURCE**

We're there when you need us.