

<p>Issued 16-Aug-07</p>	<p>MATERIAL STANDARD ELECTRIC OPERATIONS ORGANIZATION</p> <p style="text-align: center;"></p>	<p>M1204</p> <p>Revision #0 Page 1 of 5</p>
-----------------------------	--	---

M1204

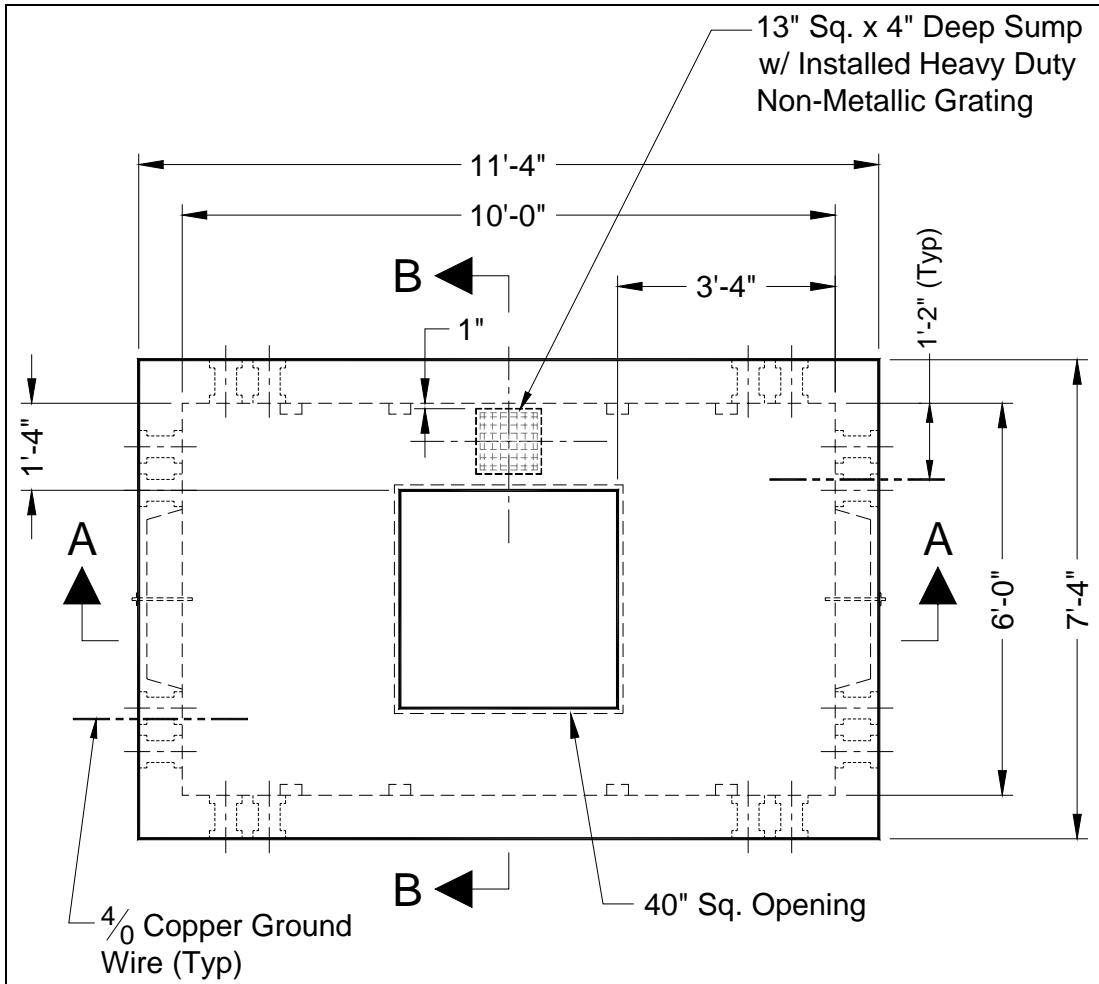
****This standard supersedes BECo U/G Std. 2.10-6.25****

PRECAST CONCRETE MANHOLE
6'- 0"W x 10'- 0"L x 8'- 0"H INSIDE DIMENSIONS

- 1.0 **Scope** – This specification details the dimensions, strength, reinforcement, and appurtenances required for fabrication of precast, concrete manholes.
 - 2.0 **General** – Vendor design and fabrication drawing shall conform to the minimum requirements of this specification and shall be signed and stamped by a Massachusetts registered professional engineer.
 - 3.0 **Design Notes**
 - 3.1 Concrete minimum strength - 5000 psi @ 28 days.
 - 3.2 Steel reinforcement - ASTM A615, Grade 60.
 - 3.3 Minimum Steel Cover – 1inch.
 - 3.4 Design Loading - AASHTO HS20-44.
 - 3.5 Design Specifications – ACI 318 & AASHTO Load Factor Design Method.
 - 3.6 Manufacturer's name and year of fabrication shall be stenciled on vertical wall of access chimney.
 - 3.7 All Termaducts to have bell ends flush with the inside wall.
 - 3.8 Termaducts may be specified in lieu of knockouts at the direction of NSTAR.
 - 3.9 Construction Joint – Sealed with 1" diameter Butyl Rubber or approved equal.
 - 4.0 **Bill of Materials**
 - 4.1 The catalog ID for the precast manhole is "16240".
 - 4.2 The catalog ID's for the "3" & "4" position stanchions are "1752" & "1753". Stanchions shall be manufactured by J. S. Products, Whitman, MA (or approved equal).
 - 4.3 The catalog ID for the bonding frame is "1229". Bonding frame consist of 1 - #4/0 stainless steel ground clamp, 1 - #10 x 1-1/2" lg x 5/16" dia SS screw and 1- lead plug as supplied by Tools Unlimited Inc, Stoughton, MA (or approved equal).
-

<p>Issued 16-Aug-07</p>	<p>MATERIAL STANDARD ELECTRIC OPERATIONS ORGANIZATION</p> <p style="text-align: center;"></p>	<p>M1204 Revision #0 Page 2 of 5</p>
-----------------------------	--	--

- 4.4 The recessed pulling eye, "New PI-2", shall be manufactured by Pennsylvania Insert Corp., Spring City, PA (or approved equal).
- 4.5 The sump grate shall be "Polylock Part No. 3037" as manufactured by Polylock Corp., Wallingford, CT (or approved equal).



PLAN

NOTE: DRAWING IS NOT TO SCALE

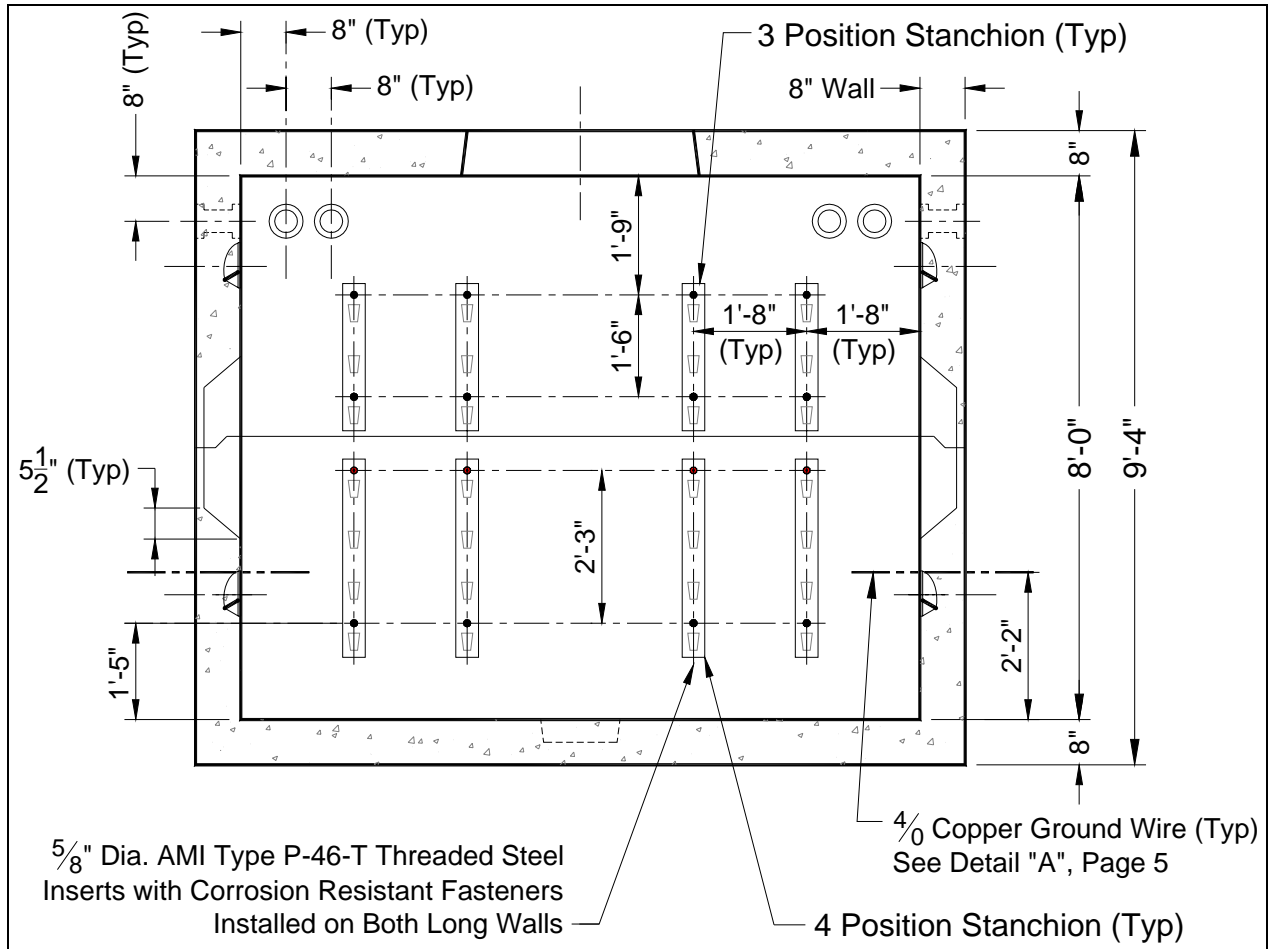
Issued
16-Aug-07

MATERIAL STANDARD
ELECTRIC OPERATIONS ORGANIZATION



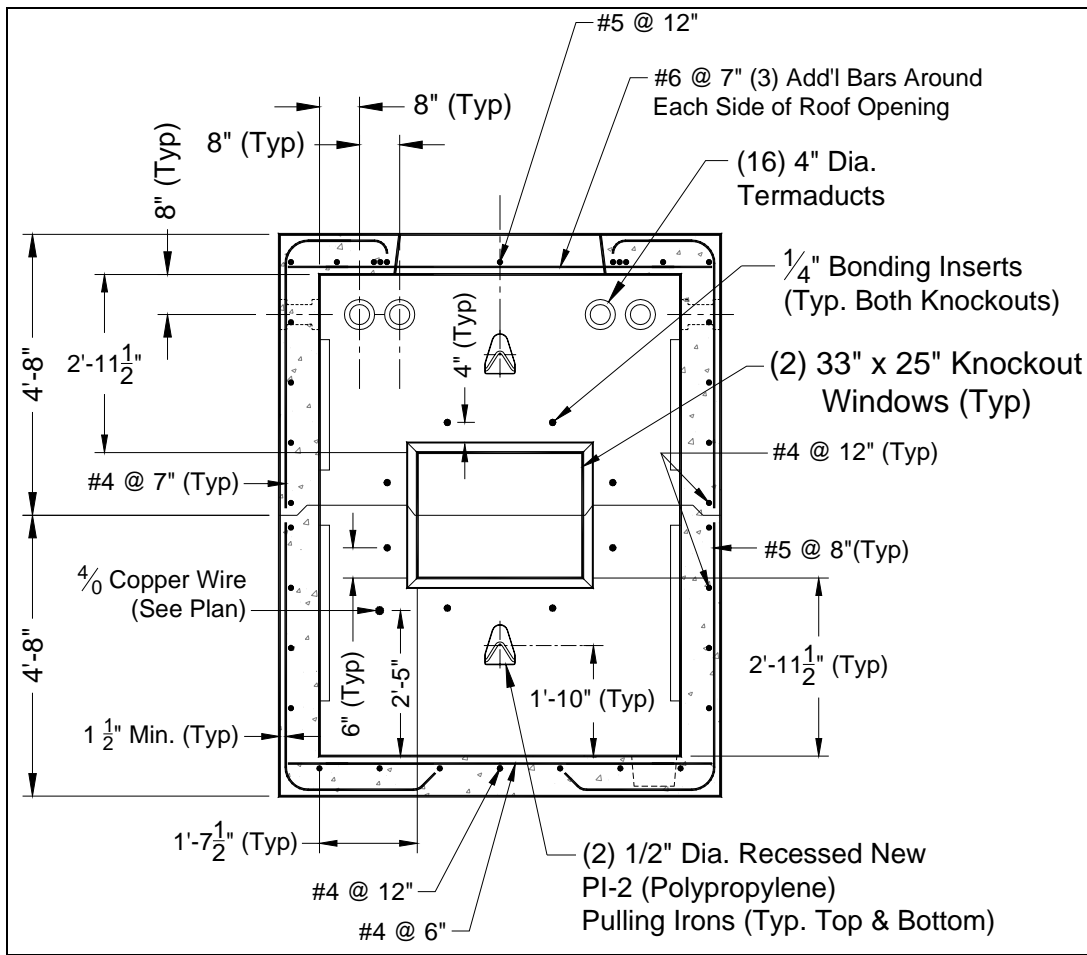
M1204

Revision #0
Page 3 of 5



SECTION A-A

NOTE: LONG WALLS ARE MIRROR IMAGES.
DRAWING IS NOT TO SCALE.



SECTION B-B

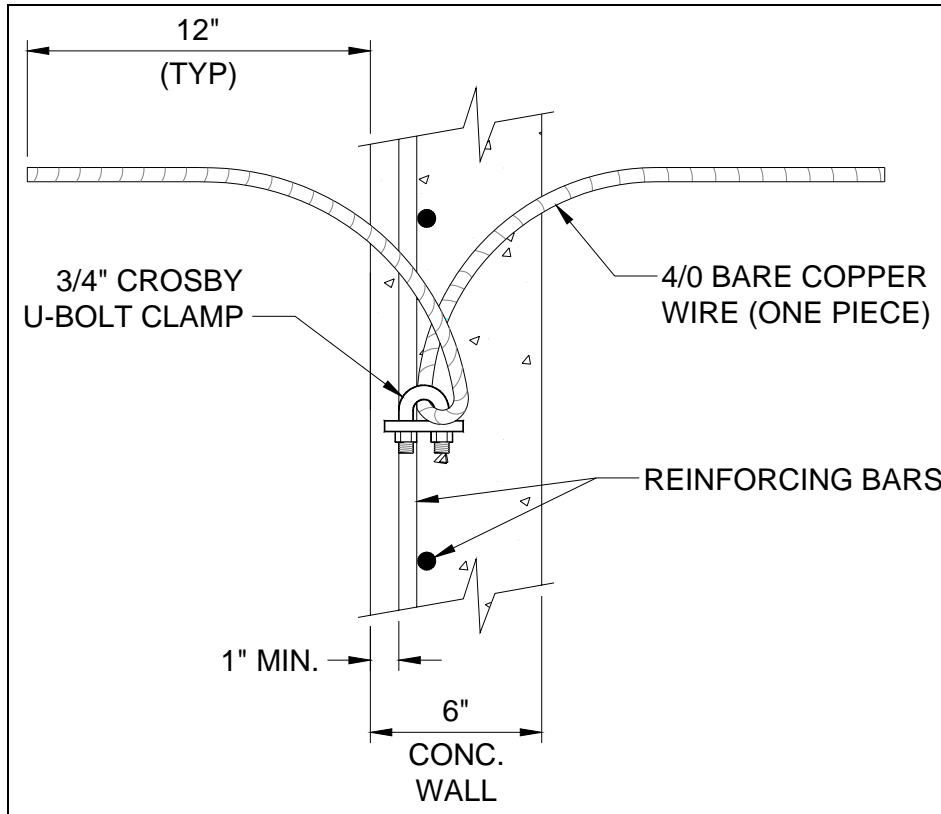
NOTE: SHORT WALLS ARE MIRROR IMAGES.
DRAWING IS NOT TO SCALE

Issued
16-Aug-07

MATERIAL STANDARD
ELECTRIC OPERATIONS ORGANIZATION

M1204

Revision #0
Page 5 of 5



DETAIL "A"

NOTE: DRAWING IS NOT TO SCALE.

Approved by: Elizabeth J. Leonard
Manager, Distribution
Technical Engineering