

ISSUED 08-Aug-07	MATERIAL STANDARD ELECTRIC OPERATIONS ORGANIZATION  	M1202  Revision #0 Page 1 of 5
---------------------	--	---

M1202

\*\*\*\*This standard supersedes BECo U/G Std 2.10-6.26

**PRECAST CONCRETE MANHOLE**  
**4'-0"W X 6' - 0"L X 6'- 0"H INSIDE DIMENSIONS**

**1.0 Scope** – This specification details the dimensions, strength, reinforcement, and appurtenances required for fabrication of precast, concrete manholes.

**2.0 General** – Vendor design and fabrication drawing shall conform to the minimum requirements of this specification and shall be signed and stamped by a Massachusetts registered professional engineer.

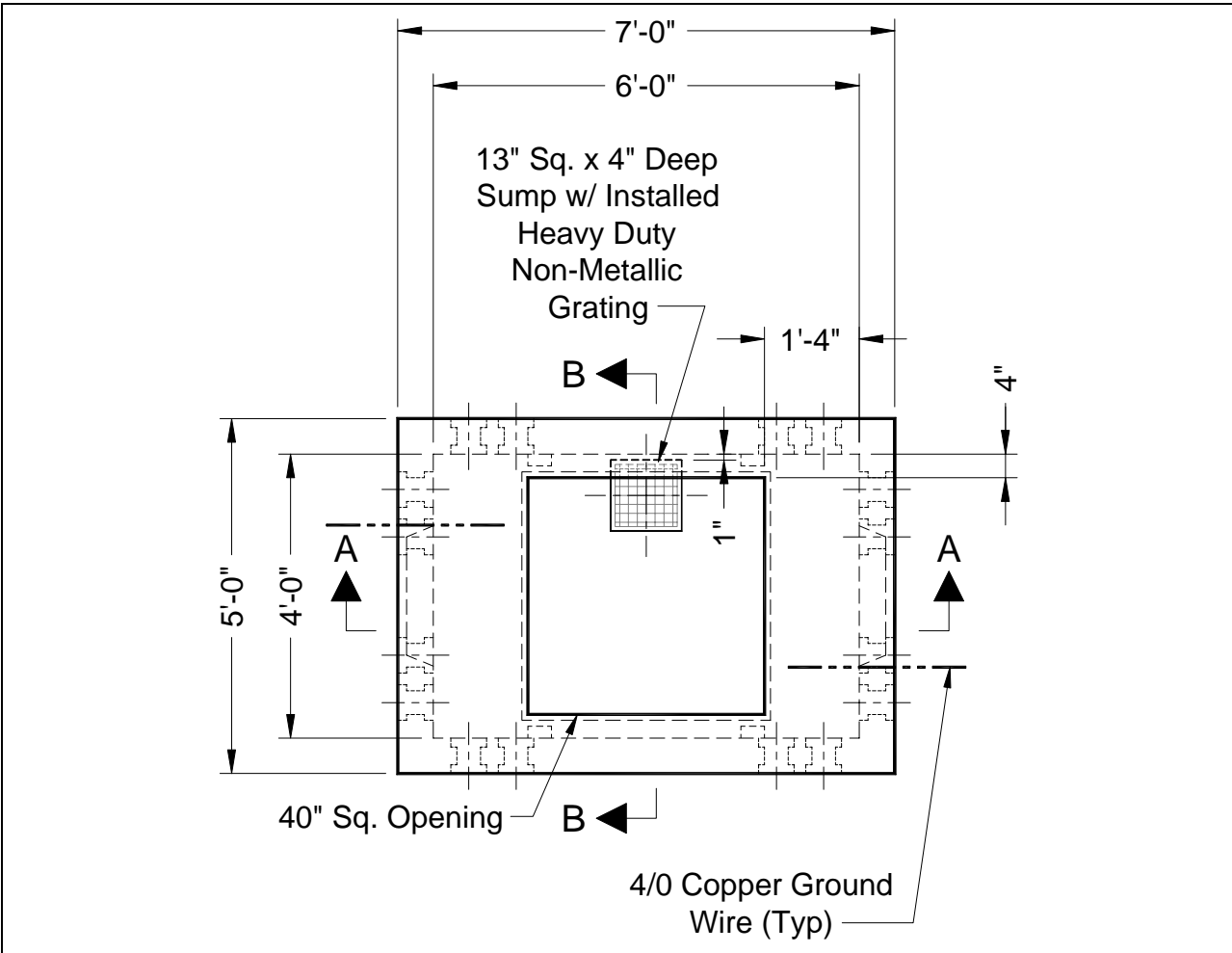
**3.0 Design Notes**

- 3.1 Concrete minimum strength - 5000 psi @ 28 days.
- 3.2 Steel reinforcement- ASTM A615, Grade 60.
- 3.3 Minimum Steel Cover – 1 inch.
- 3.4 Design Loading - AASHTO HS20-44.
- 3.5 Design Specifications – ACI 318 & AASHTO Load Factor Design Method.
- 3.6 Manufacturer’s name to be stenciled on vertical wall of access chimney.
- 3.7 All Termaducts to have bell ends flush with the inside wall.
- 3.8 Termaducts may be specified in lieu of knockouts at the direction of NSTAR.
- 3.9 Construction Joint – Sealed with 1” diameter Butyl Rubber or approved equal.

**4.0 Bill of Material**

- 4.1 The catalog ID for the precast manhole is “16238”.
- 4.2 The catalog ID’s for the “2” & “3” position stanchions are “1751” & “1752”. Stanchions shall be manufactured by J. S. Products, Whitman, MA (or approved equal).
- 4.3 The catalog ID for the bonding frame is “1229”. Bonding frame consists of 1 - #4/0 stainless steel ground clamp, 1 - #10 x 1-1/2” lg x 5/16” dia SS screw and 1- lead plug as supplied by Tools Unlimited Inc, Stoughton, MA (or approved equal).

- 4.4 The recessed pulling eye, "New PI-2", shall be manufactured by Pennsylvania Insert Corp., Spring City, PA (or approved equal).
- 4.5 The sump grate shall be "Polylock Part No. 3037" as manufactured by Polylock Corp., Wallingford, CT (or approved equal).



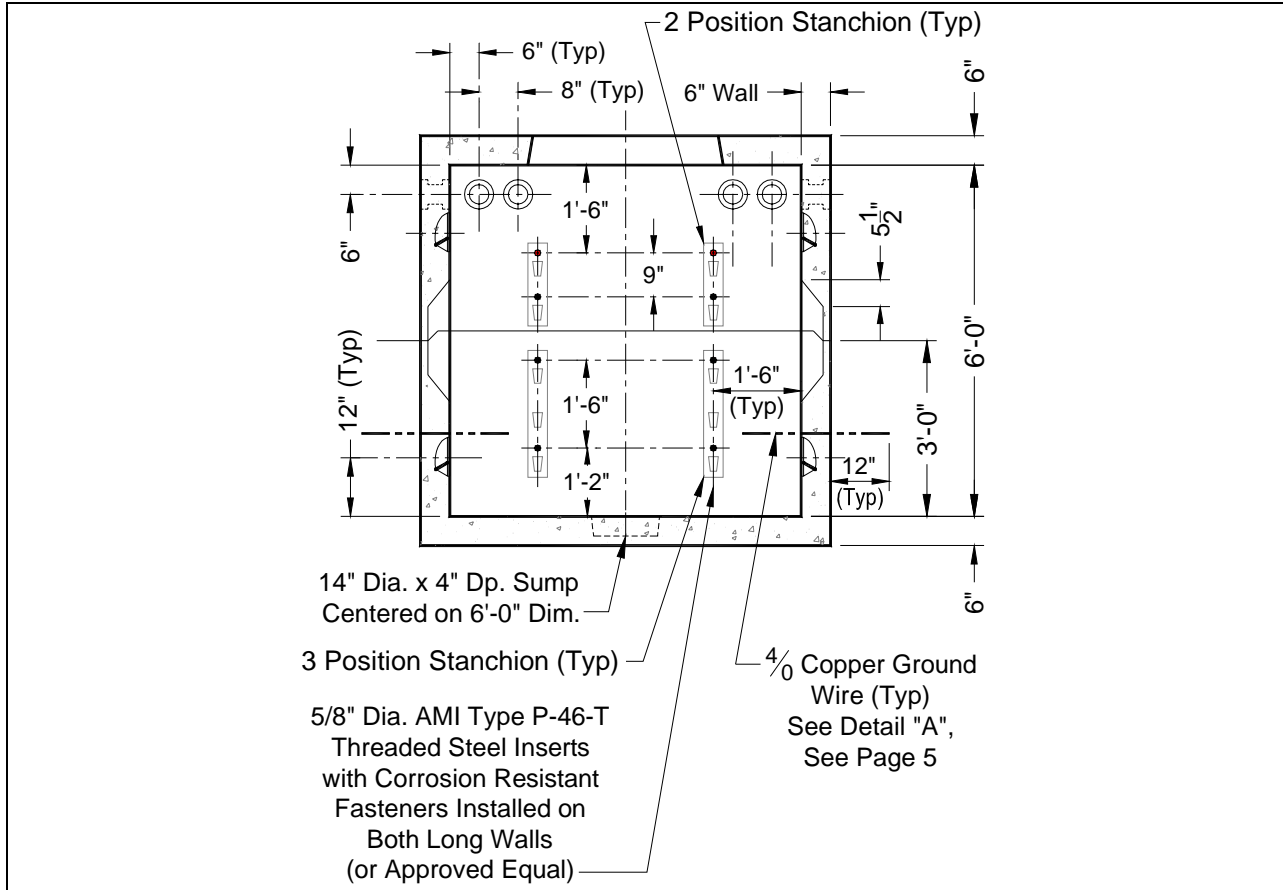
NOTE: DRAWING IS NOT TO SCALE.

ISSUED  
08-Aug-07

MATERIAL STANDARD  
ELECTRIC OPERATIONS ORGANIZATION

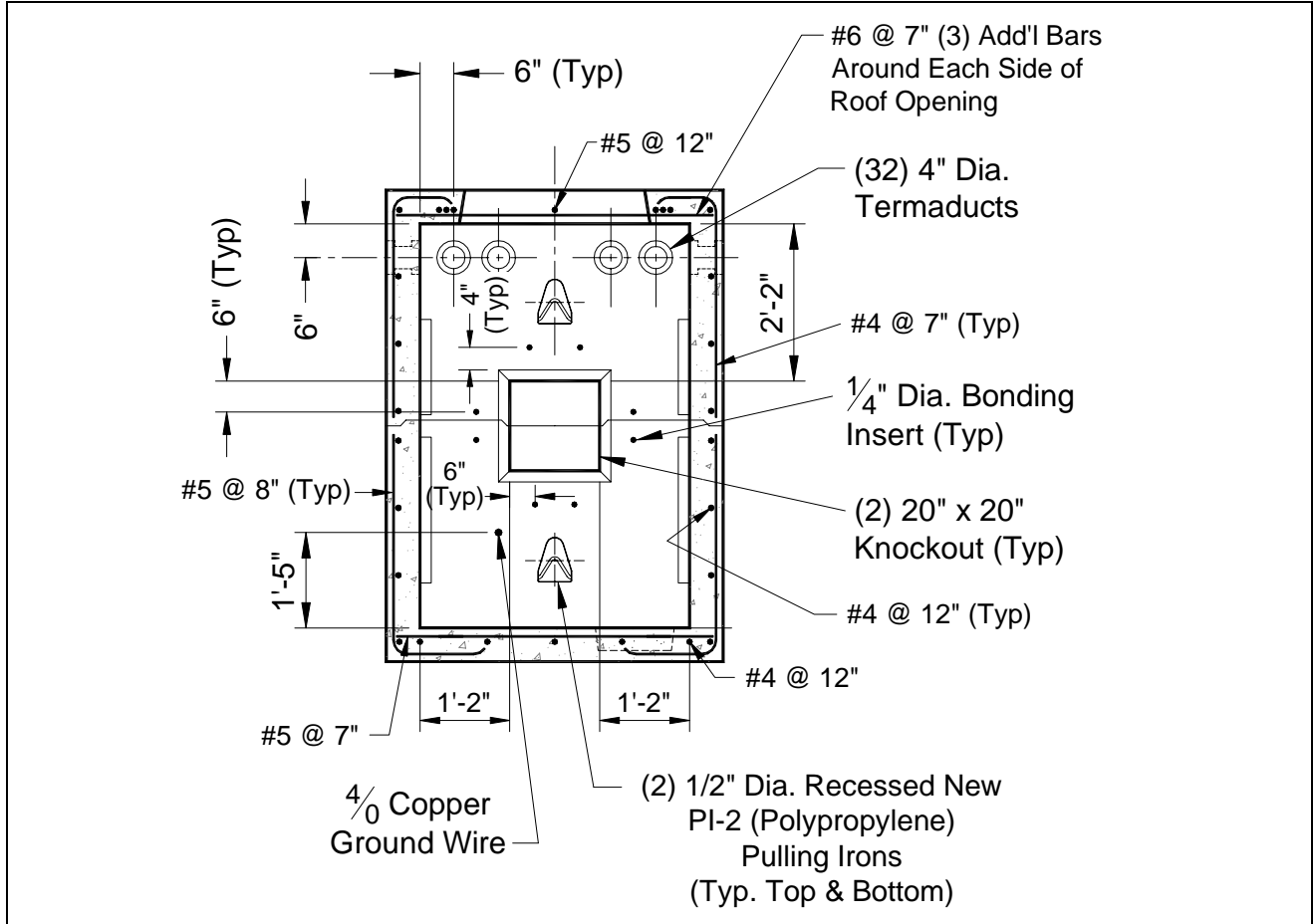


M1202  
Revision #0  
Page 3 of 5



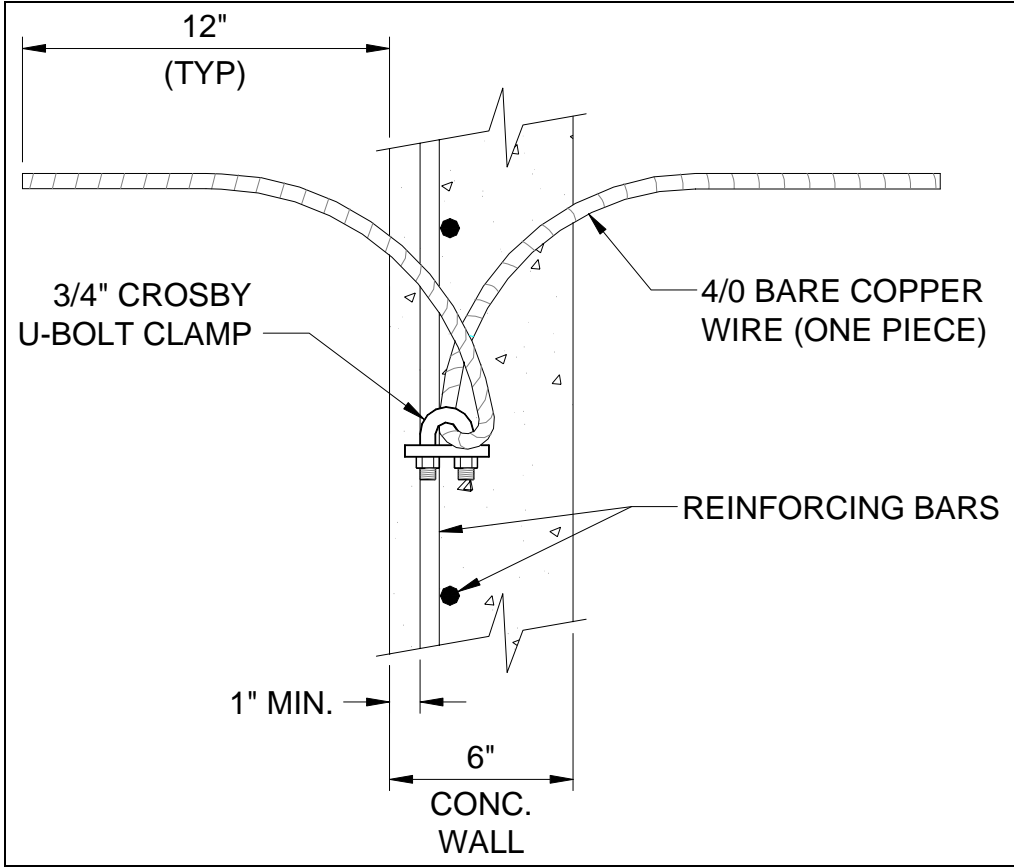
**SECTION A-A**

NOTE: LONG WALLS ARE MIRROR IMAGES.  
DRAWING IS NOT TO SCALE.



### **SECTION B-B**

NOTE: SHORT WALLS ARE MIRROR IMAGES.  
DRAWING IS NOT TO SCALE.



**DETAIL "A"**

NOTE: DRAWING IS NOT TO SCALE

Approved by: Elizabeth J. Leonard  
 Manager - Distribution  
 Technical Engineering