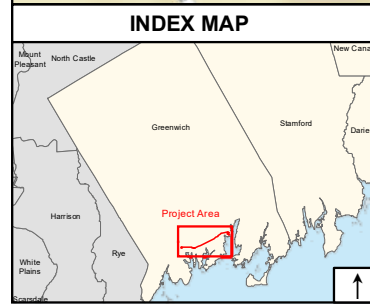




TRANSMISSION LINE TO BE PIPE-JACKED UNDERNEATH INTERSTATE-95

INDIAN HARBOR CROSSING VIA COFFERDAM NORTH OF EXISTING DAVIS AVENUE BRIDGE

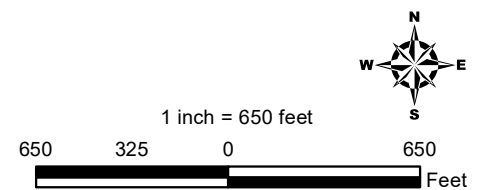
Sources: Esri, HERE, DeLorme, USGS, Intermap, increment P Corp., NRCAN, Esri Japan, METI, Esri China (Hong Kong), Esri (Thailand), MapmyIndia, © OpenStreetMap contributors, and the GIS User Community



Legend

- Approved Underground Route
- - - - - Proposed Indian Harbor Crossing via Cofferdam North of Existing Davis Avenue Bridge
- - - - - Trenchless Crossing Underneath Interstate I-95
- + + + + + Railroad

Base Map: ESRI Street Map



Underground Transmission Line Route

Greenwich Substation and Line Project
Greenwich, Connecticut

EVERSOURCE
ENERGY

ALL-POINTS
TECHNOLOGY CORPORATION

November 2017