

August 2017

# Customer Update

# EVERSOURCE

## Eversource Walk for Boston Children's Hospital

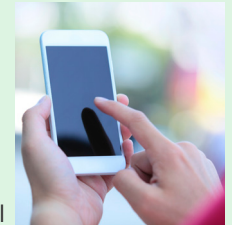
This June, Eversource employees, their families and thousands of other walkers took to the Esplanade in Boston to help raise funds for Boston Children's Hospital.

Proceeds from the Eversource Walk for Boston Children's Hospital support the hospital's patient care, pediatric research and community programs.

It's not too late to support Boston Children's Hospital. Visit [bostonchildrens.org/WalkWithUs](http://bostonchildrens.org/WalkWithUs) to learn how.

## Sign up Today for Outage Updates

Eversource offers a variety of ways to receive outage updates for your electric service and the status of your restoration, all available 24/7:



**Outage Alerts:** Receive on-the-go updates in the channel you choose - text, email or phone call. Updates include estimated times of restoration, the cause of the outage, number of customers restored and final restoration time. Visit [Eversource.com](http://Eversource.com) and log in to your account to update your notification preferences today. If you already receive Outage Alerts, no further action is required.

- **Online:** Visit [Eversource.com](http://Eversource.com) to report your outage or check our outage map.
- **Phone:** Call us at **800-592-2000** in Eastern Massachusetts or **877-659-6326** in Western Massachusetts to report your outage anytime, day or night.



## Committed to Environmental Sustainability

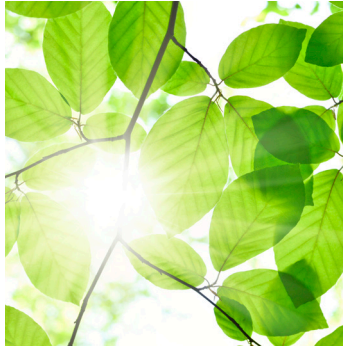
We're proud to be recognized as one of the greenest energy companies in the nation.

Our commitment to environmental sustainability is an important component of our vision for conducting business now and for future generations.

We are focusing on four key areas:

- **Climate Leadership** and the meaningful strategies we have developed to reduce our carbon footprint;
- **Clean Energy** and our commitment to bring more clean, affordable and sustainable energy to the region;
- **Accountability** for all environmental laws and regulatory commitments and requirements;
- **Stewardship** and the way we take great care to promote conservation and manage natural and cultural resources.

For more information about Eversource's environmental sustainability commitment, visit the "About" section of [Eversource.com](http://Eversource.com).



**Buy Smart and Save with ENERGY STAR®**

Visit [MassSave.com](http://MassSave.com) for more information on available rebates from Eversource.

\*Please note, energy efficiency programs for customers on Cape Cod and Martha's Vineyard are available through the Cape Light Compact.

## Ready When Storms are in the Forecast

All year long, we're working to stay ahead of the impacts of severe weather by building a stronger energy delivery system, incorporating new technologies that help reduce the length of outages, and improving how we get information to you when bad weather strikes. Eversource crews stand ready to head out into the storm when others head home, and we want you to be ready, too!

- Prepare for severe weather and hurricane season by visiting the Outages section of [Eversource.com](http://Eversource.com). You'll find a wealth of information to help you be prepared and safe before, during, and after a major storm.
- Sign up to receive outage and restoration updates via your choice of text, email, or phone message.
- Receive storm and restoration updates by following us on Facebook ([www.facebook.com/EversourceMA](http://www.facebook.com/EversourceMA)) and Twitter (<https://twitter.com/EversourceMA>).

**EVERSOURCE**

Stay Connected to Eversource on

