

Mystic-East Eagle-Chelsea Reliability Project

EVERSOURCE
ENERGY

Public Comment Hearing
EFSB 14-04
D.P.U. 14-153/14-154

Chelsea Senior Center
Chelsea, MA
July 29, 2015
7:00 p.m.

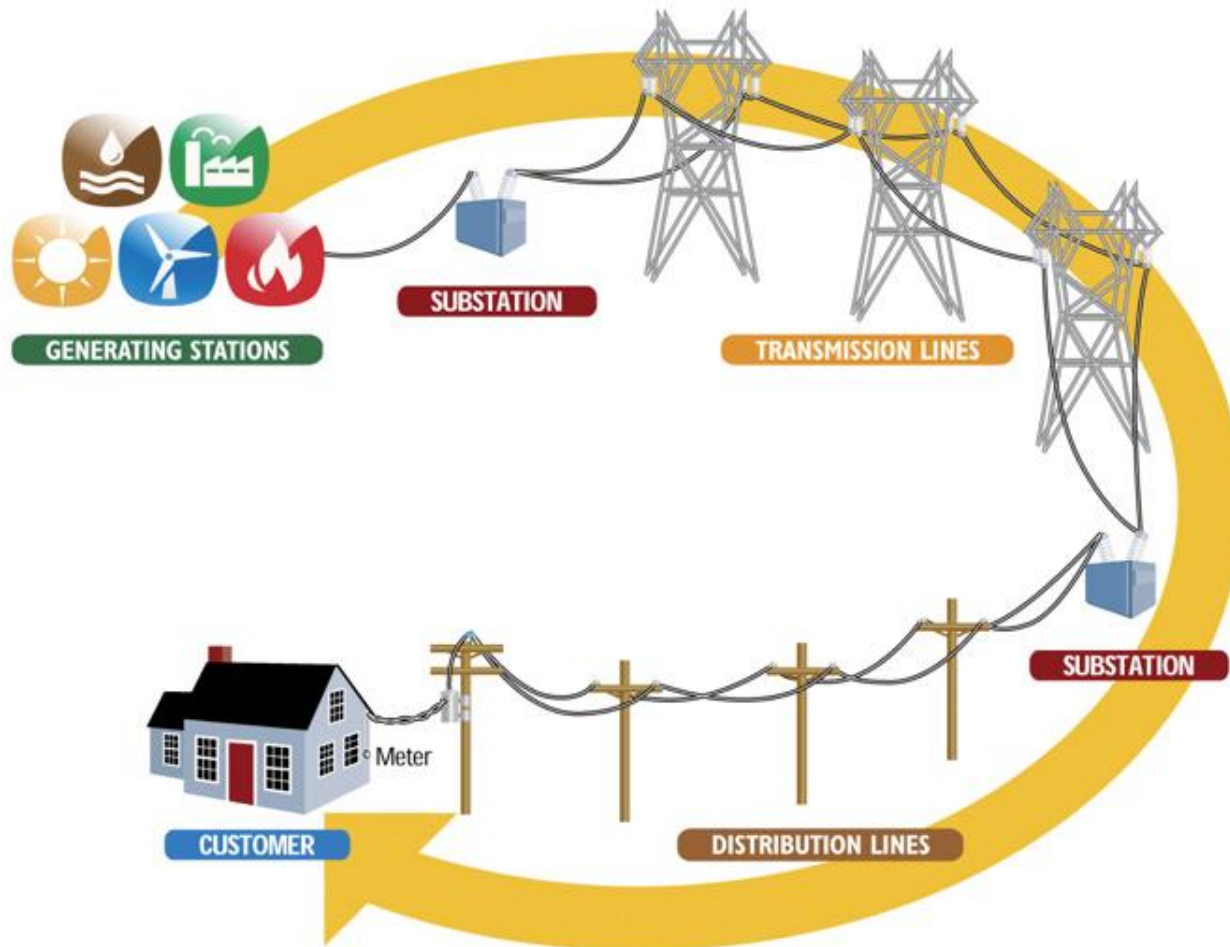
Tonight's Presentation

- Introductions
- Project Need
- Project Overview
- East Eagle Street Substation
- Transmission Lines
- Construction Overview
- Project Schedule
- Community Outreach

Introductions

- Project Manager – Michael O'Malley
- Community Liaison – John Hoey, Bill Zamparelli
- Engineering – John Zicko
- Environmental – Mike Zylich
- Planning – Rich Zbikowski

Electricity Transmission & Distribution



Project Need

- Transmission system studies have identified the need for:
 - Additional substation capacity in the area
 - A new transmission connection between the Chelsea Substation (Chelsea) and the Mystic Substation (Everett)

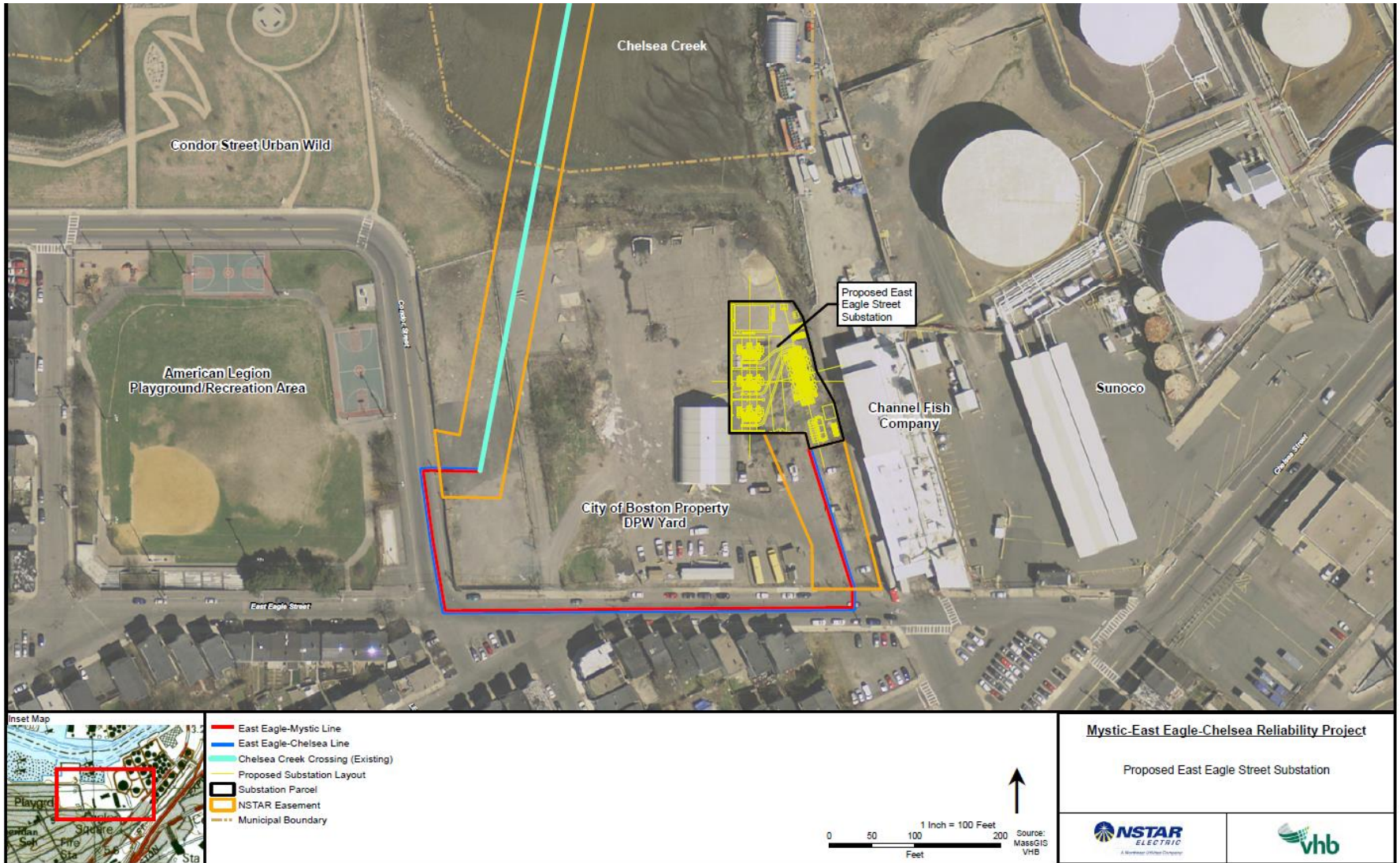
Project Purpose

- The Project is an integrated solution that will address capacity and reliability needs:
 - New substation on East Eagle Street in East Boston
 - Two new 115 kV underground transmission lines:
 - East Eagle – Mystic Line is 3.2 miles long (in East Boston, Chelsea and Everett)
 - East Eagle -- Chelsea Line is 1.5 miles long (in E. Boston and Chelsea)
-- uses existing/recently constructed infrastructure

Mystic-East Eagle-Chelsea Reliability Project

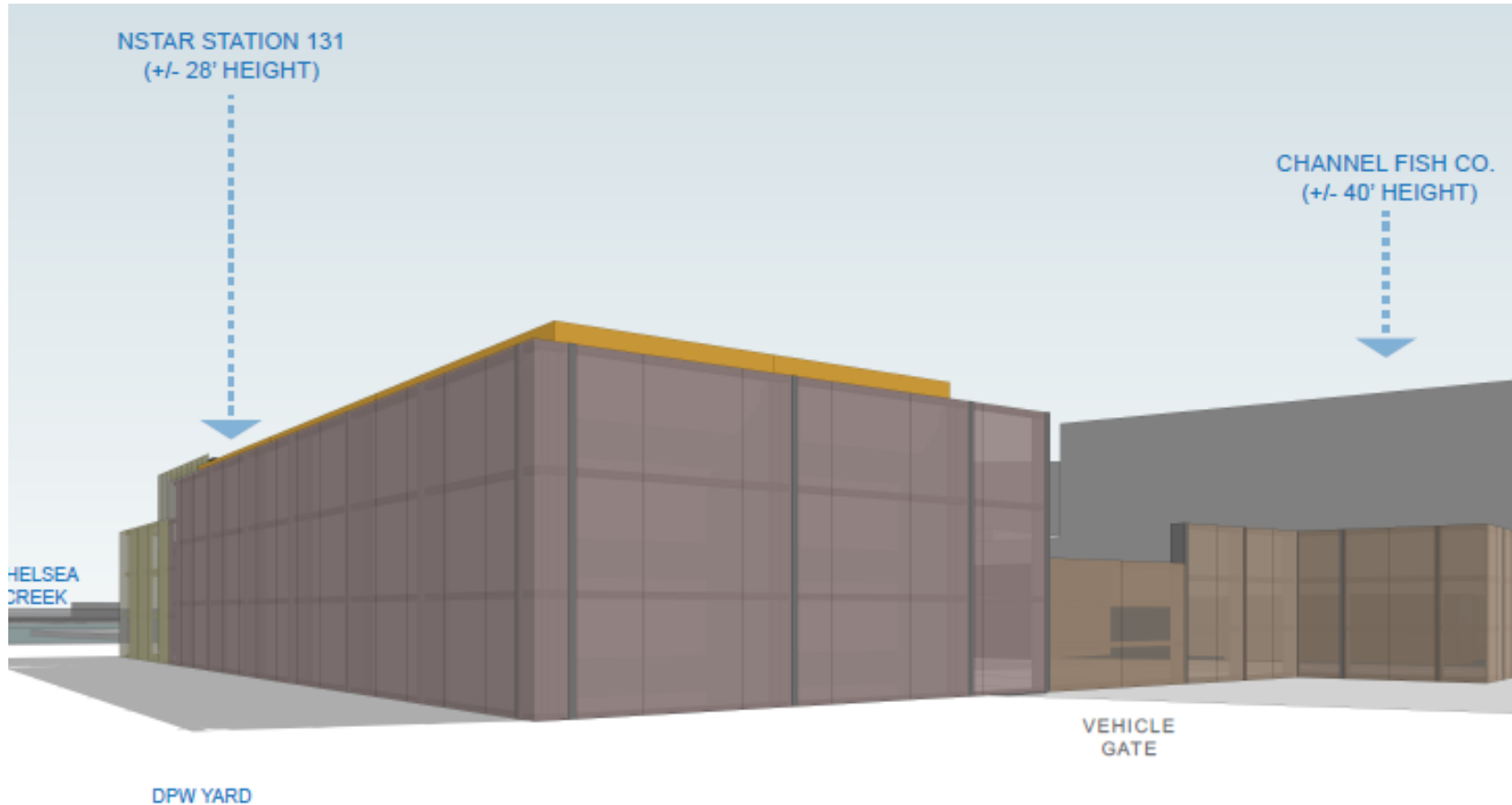
EVERSOURCE
ENERGY

Proposed East Eagle Street Substation Site



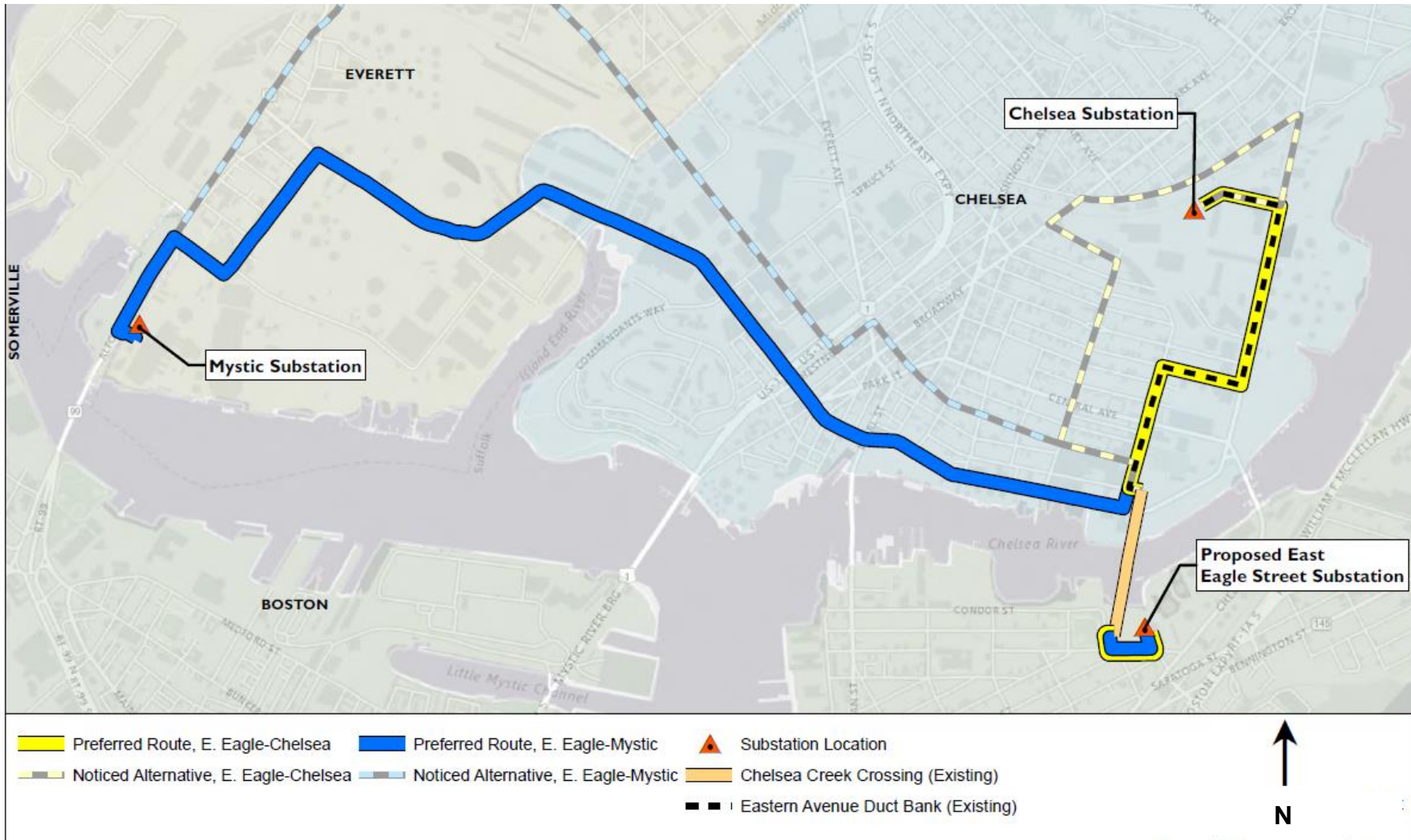
THIS DOCUMENT IS INTENDED FOR GENERAL INFORMATION PURPOSES ONLY. ALL MEASUREMENTS & LOCATIONS ARE APPROXIMATE.

East Eagle Street Substation Proposed Design



Mystic-East Eagle-Chelsea Reliability Project

Project Route



Construction Overview

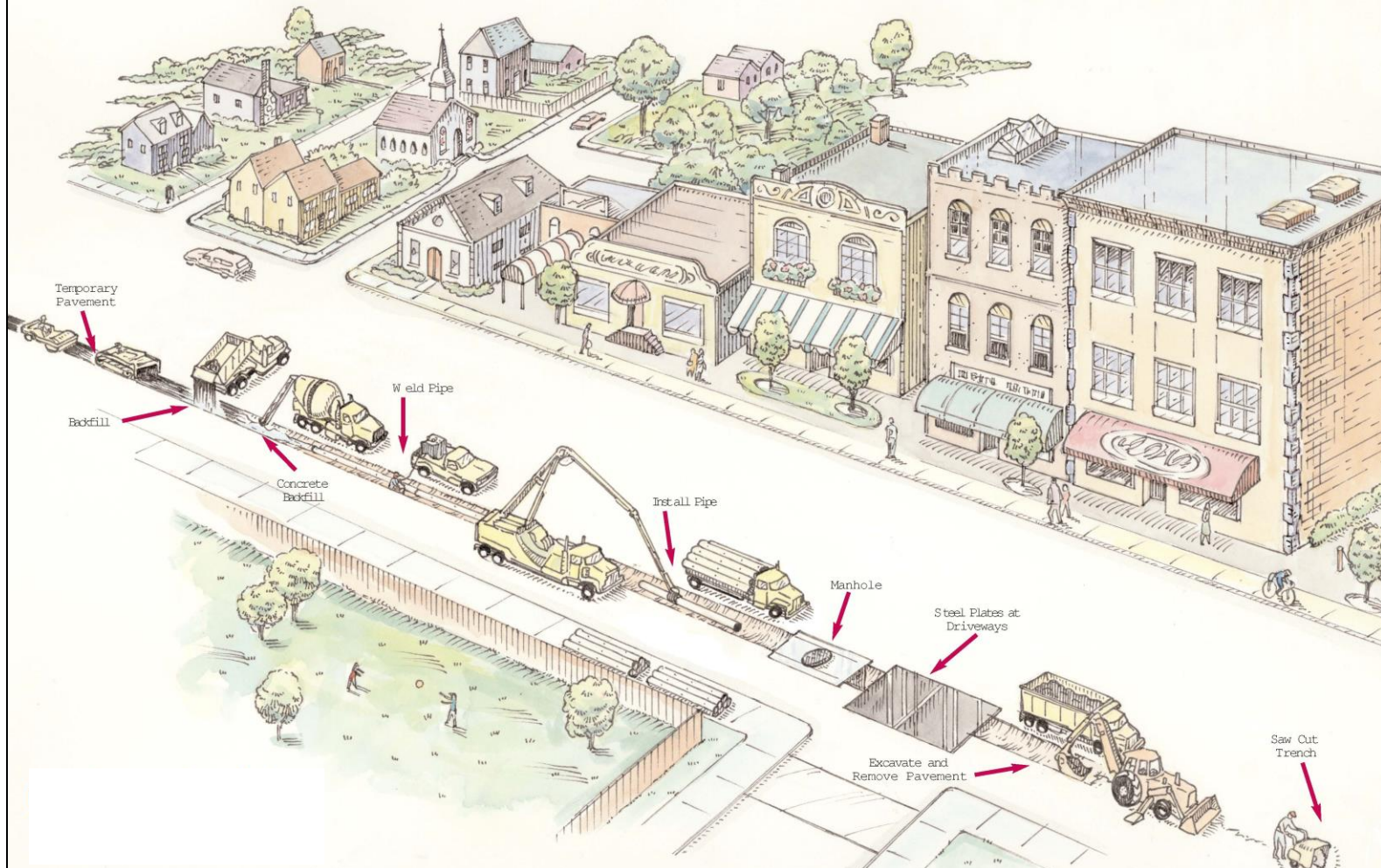


Typical trench for underground cable installation

- ❑ Manhole installation (new duct only)
- ❑ Trench excavation, pipe installation, backfill, & asphalt patching (new duct only)
- ❑ Install Cable Between Manholes
- ❑ Cable Splicing & Testing
- ❑ Final Pavement Restoration
- ❑ Construction of New Substation Concurrent with Cable Construction

Mystic-East Eagle-Chelsea Reliability Project

Installation of Underground Electric Transmission Lines



Managing Impacts During Construction

- Traffic Management
 - Traffic Management Plan
 - Police details
 - Maintaining access
- Community Outreach
 - Door-to-door outreach
 - Informational mailings to project abutters
 - Project hotline



Project Schedule

- Project design and engineering: On-going
- Public Outreach and Consultation with Municipal Authorities: On-going
- Permitting: Q4 2014 – Q2 2016
- Construction: Approx 18 months

Project Contacts

John Hoey (Boston)

John.Hoey@eversource.com, 617-541-7020

Bill Zamparelli (Chelsea, Everett)

William.Zamparelli@eversource.com, 617-629-3265