

Improving the Reliability of the Electric System across New Hampshire

Project Overview

As part of our ongoing investments to deliver reliable energy to our customers and communities, Eversource will be replacing existing wooden pole structures, in Whitefield, Dalton, and Littleton, N.H., and in Concord and Waterford, VT.

- This work will be taking place within the existing right-of-way (power line corridor) of the Q195 Line, a 115kV transmission line.
- The line is 18 miles long and is located between the Whitefield Substation in Whitefield, N.H., and Littleton Substation in Littleton, N.H.
- The project also includes replacing poles on the Q195 Tap, a 1-mile-long power line that connects the Q195 main line to the Moore Station in Littleton, N.H.
- In total, 226 wooden H-frame structures will be replaced, and new conductor (power line) and fiber optic cable, known as Optical Ground Wire (OPGW) will be installed the length of the line.

Always Working to Serve You Better

Eversource is making a significant investment in electric infrastructure in order to provide enhanced system reliability for local communities. The new steel structures will be more resilient and less susceptible to woodpecker damage, insect damage and pole rot. The new structures will also have reliability enhancements to protect the system from damage due to severe weather, including floods.

Installing OPGW on this line enables faster and more reliable communication between Eversource's substations (unrelated to any cellular or telecom service). This communication allows for improved visibility of our system, quicker response times for system issues, increased automation, reduces outage frequency and duration, improving reliability across the electric system.

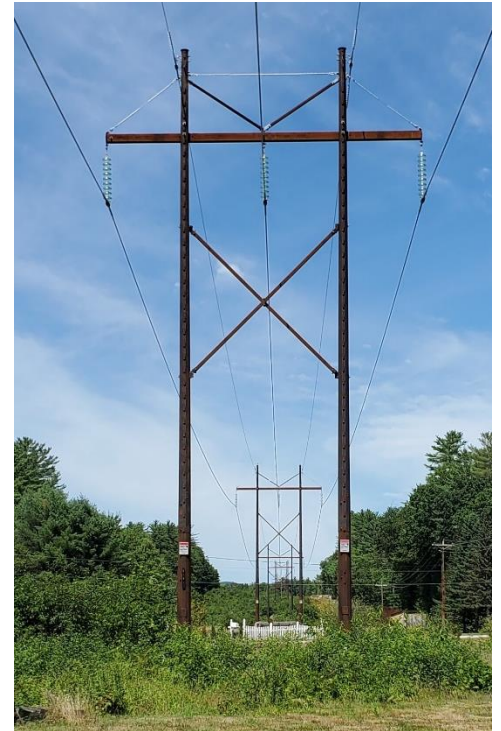
What You Can Expect

We intend to rebuild the line in the same location it is today, with some variations. We attempted to minimize structure height increases wherever possible, while ensuring current electrical standards and safety clearances are met and while also balancing other important considerations, such as environmental impacts. Overall, major tree removals are not anticipated for construction-related activity, though some may be necessary for access in various locations.

Anticipated Project Schedule

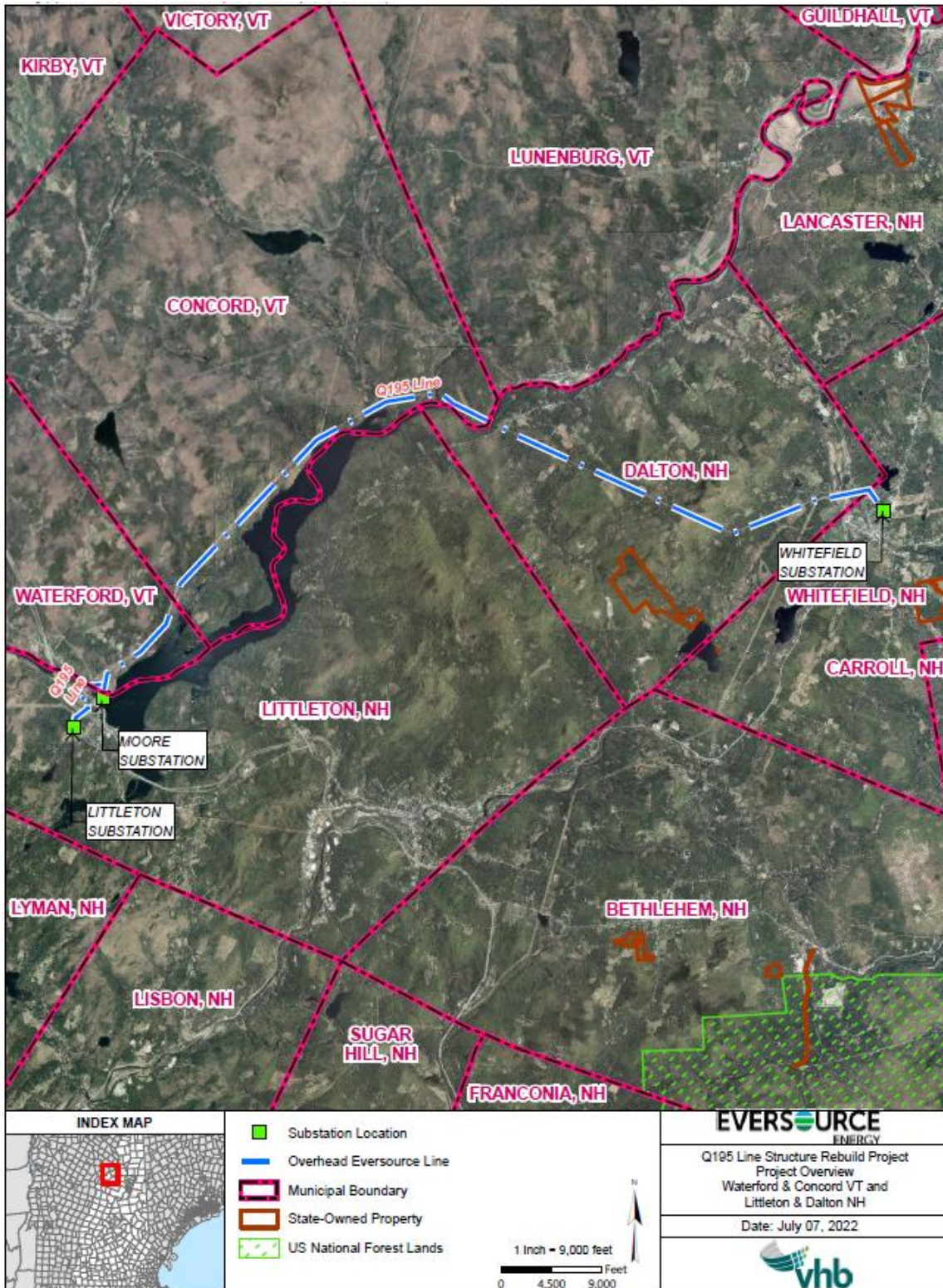
This schedule is weather dependent and subject to change

- **Vermont Siting:** First and Second Quarter 2024
- **Local and State Permitting:** 2025
- **Construction:** Second Quarter 2026
- **Site restoration:** 2028



Example of a structure to be installed

Whitefield to Littleton Line Rebuild Project (Q195)



Construction will take place along the blue dashed line.